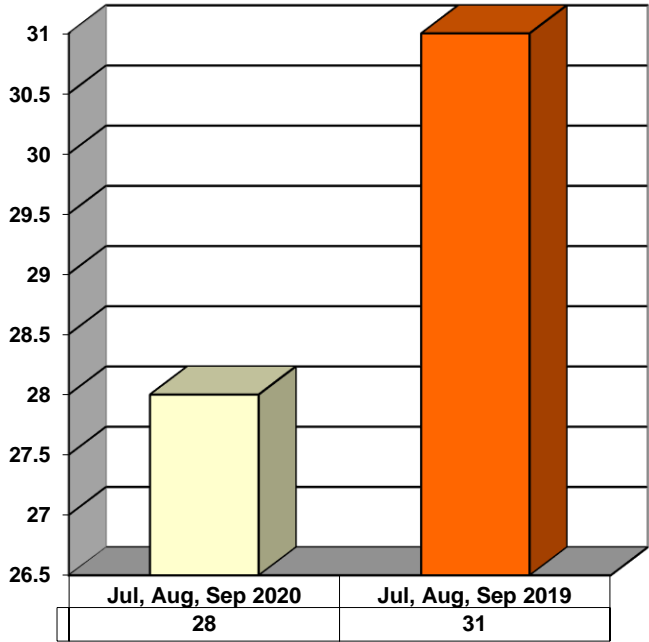
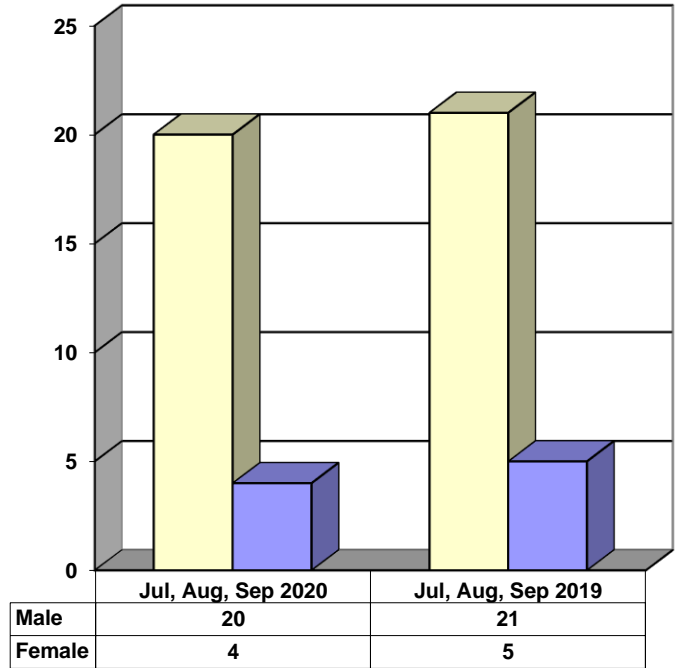


**JUVENILE SUPERVISION INFORMATION  
MONTHS OF JULY, AUGUST AND SEPTEMBER 2020  
(Compared to Prior Year)**

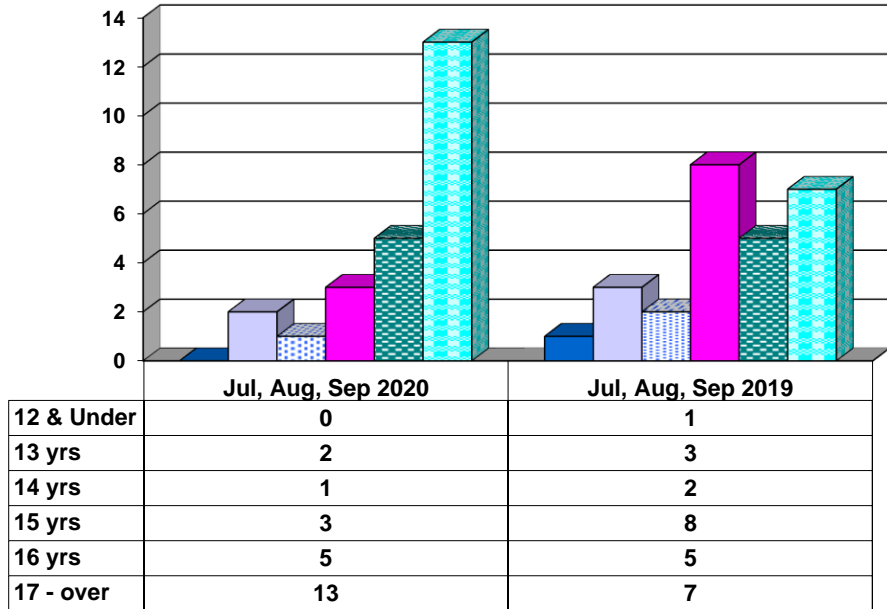
**Juvenile Delinquency Petitions Filed**



**Gender Demographics for Juvenile Admissions**

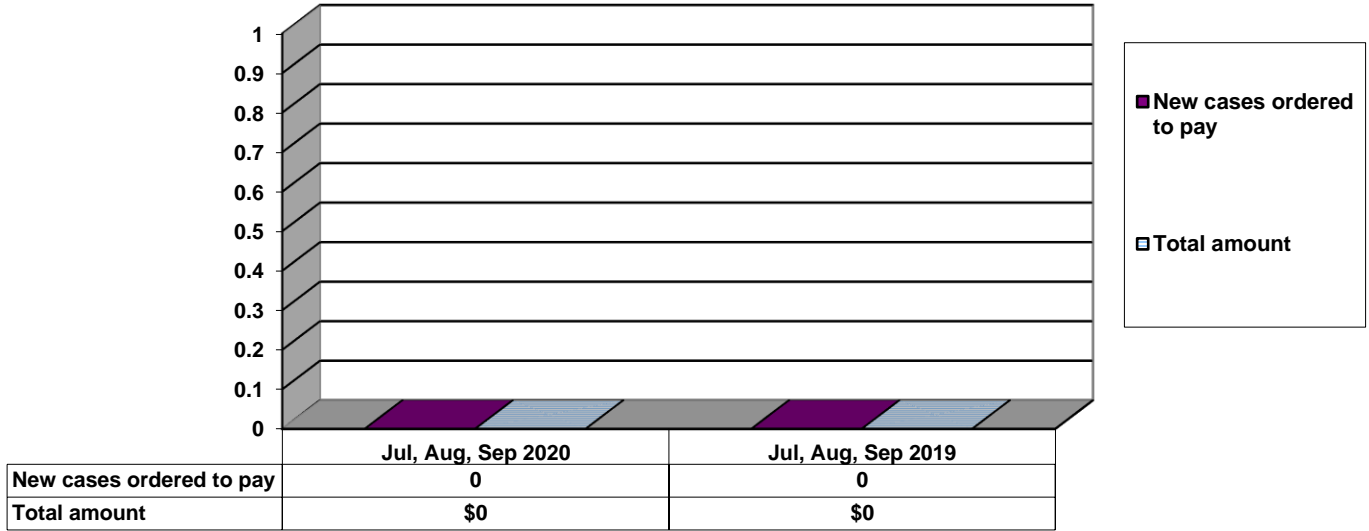


**Age Demographics for Juvenile Admissions**

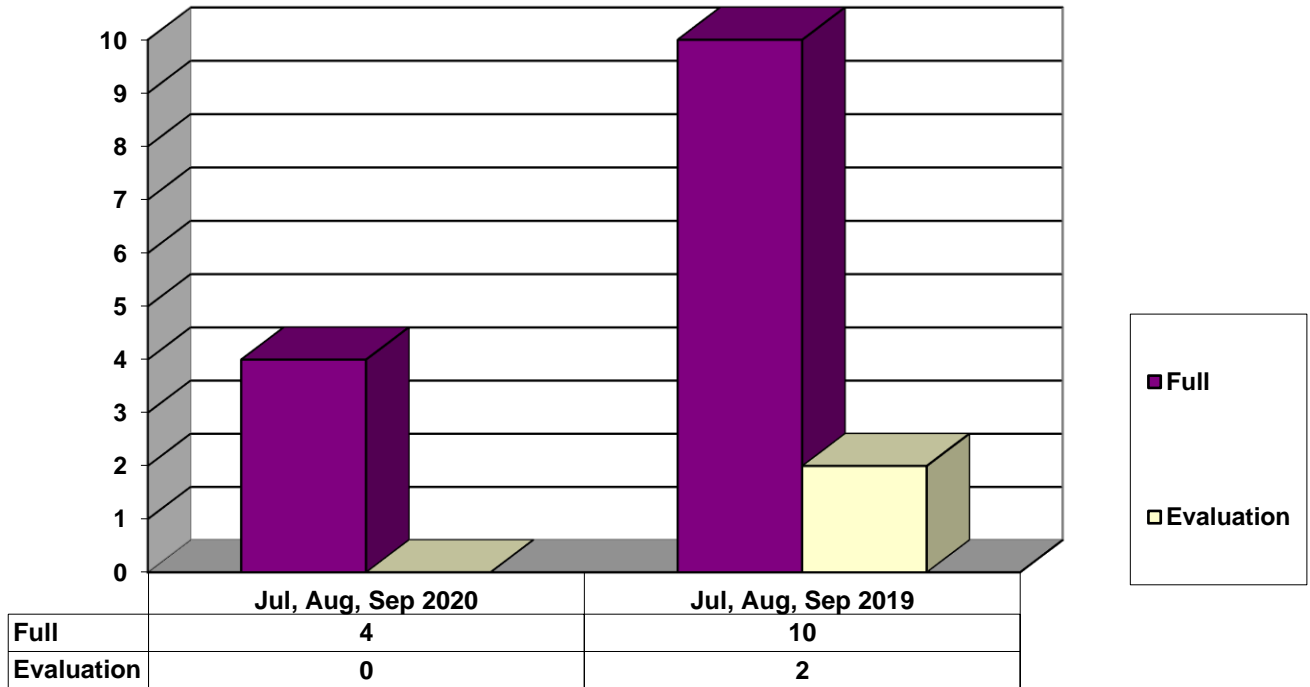


■ 12 & Under   
 ■ 13 yrs   
 ■ 14 yrs   
 ■ 15 yrs   
 ■ 16 yrs   
 ■ 17 - over

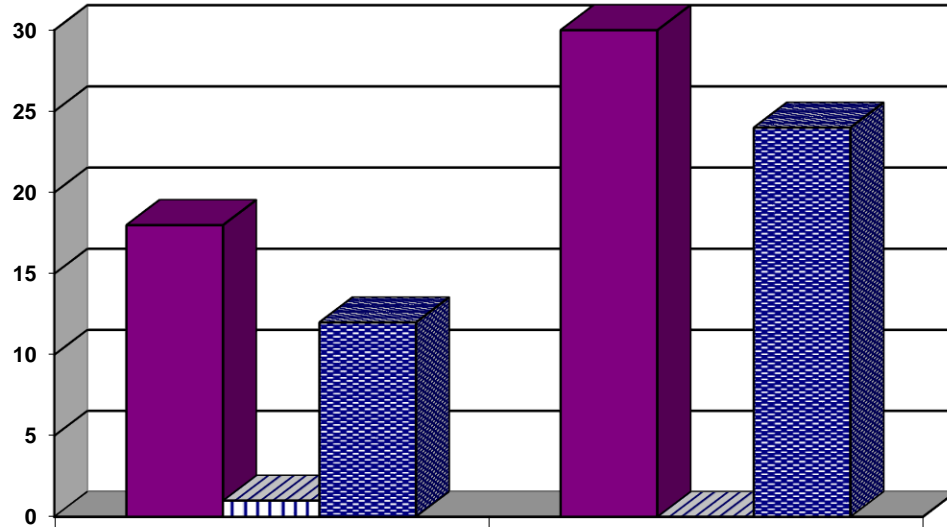
### Restitution Ordered in New Juvenile Cases



### Commitments to Illinois Department of Juvenile Justice



### Investigations Completed by Juvenile Division



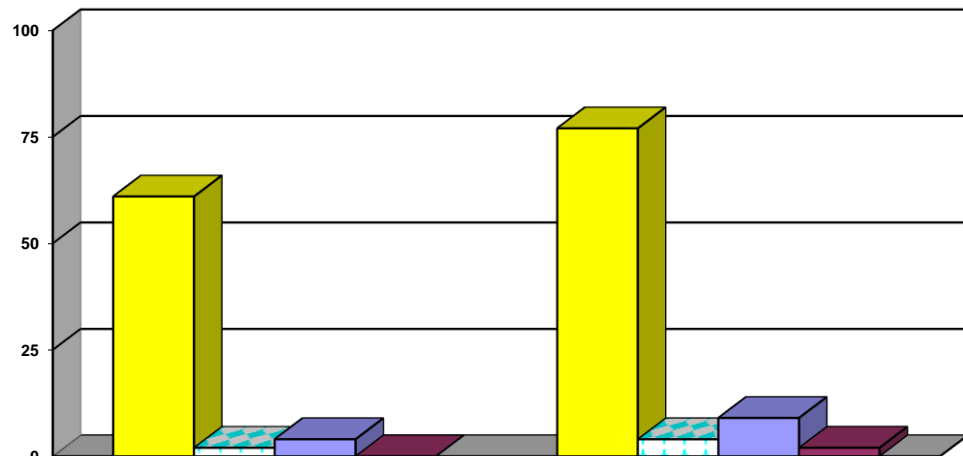
	Jul, Aug, Sep 2020	Jul, Aug, Sep 2019
Social Histories	18	30
Supplemental Social History	1	0
Remission/Review	12	24

■ Social Histories

▨ Supplemental Social History

■ Remission/Review

### Juvenile Caseload at End of Reporting Periods



	September 2020	September 2019
Probation	61	77
Continued under Supervision	2	4
Informal	4	9
Other	0	2

■ Probation

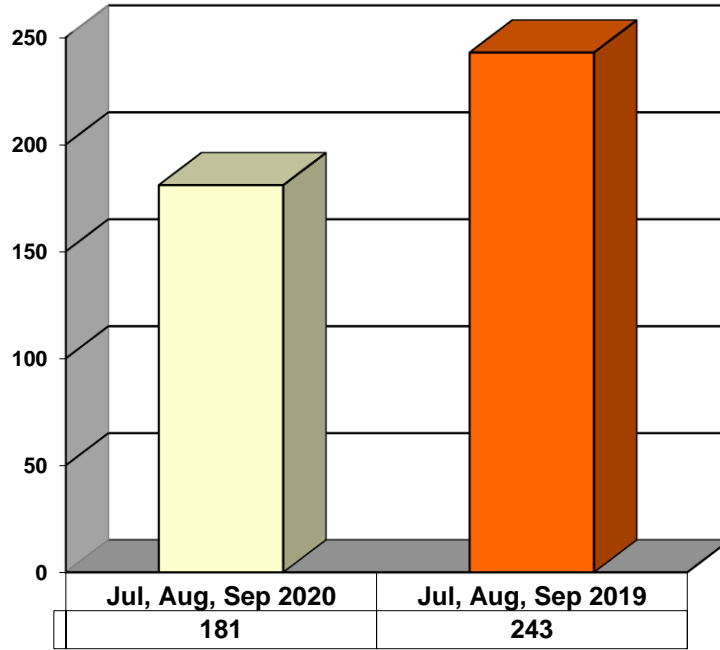
▨ Continued under Supervision

■ Informal

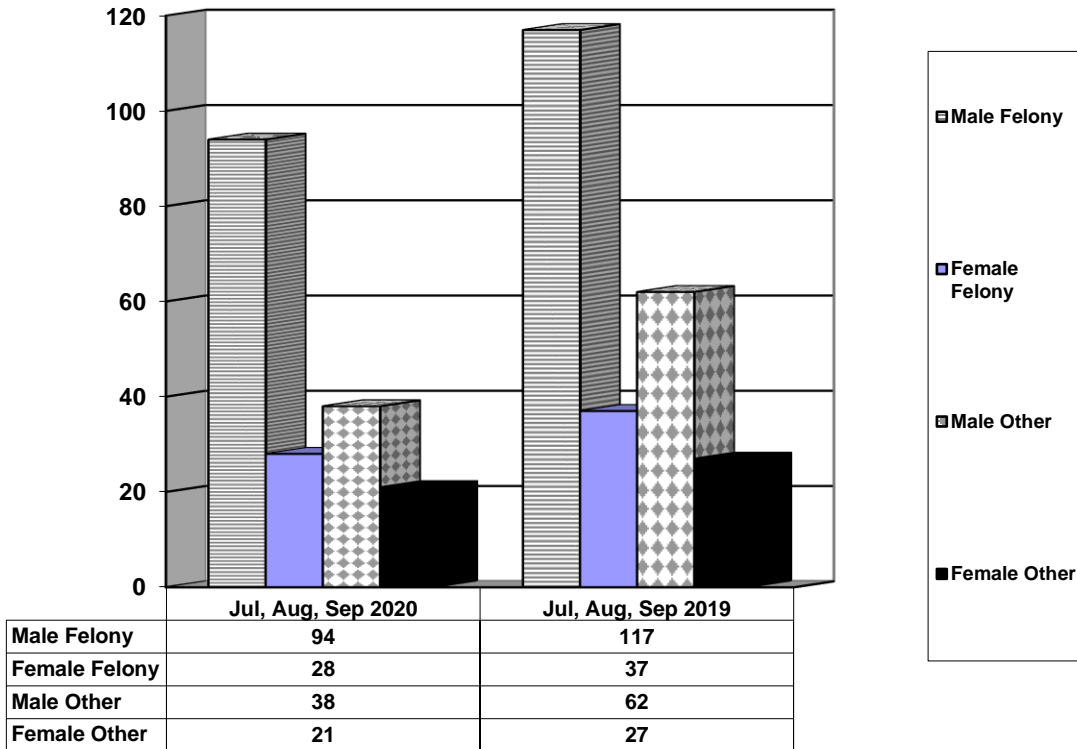
■ Other

**ADULT SUPERVISION INFORMATION  
JULY, AUGUST AND SEPTEMBER 2020  
(Compared to Prior Year)**

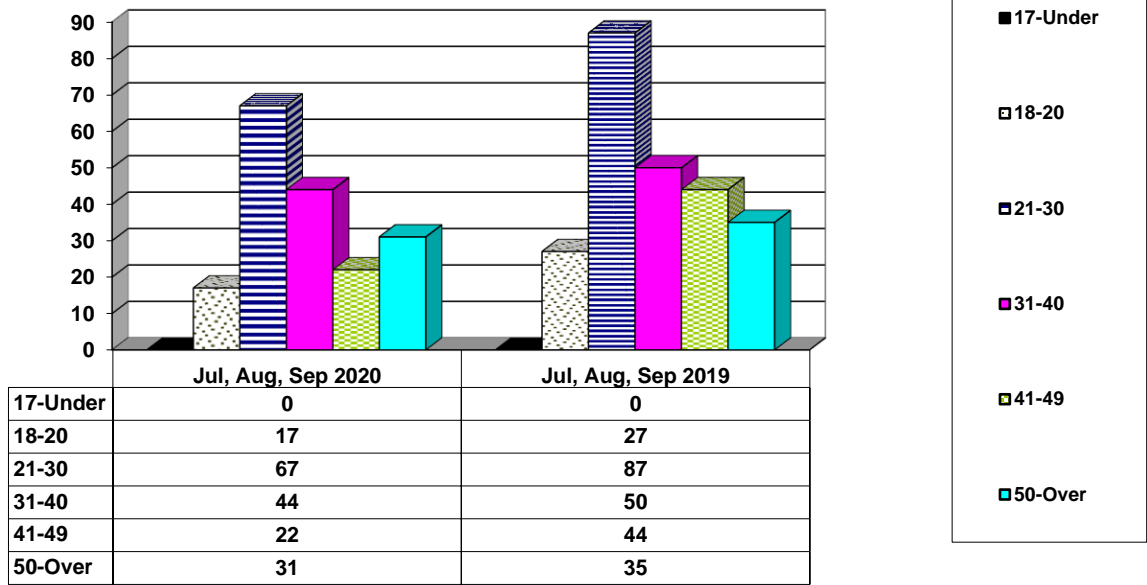
**Adult Intakes Completed**



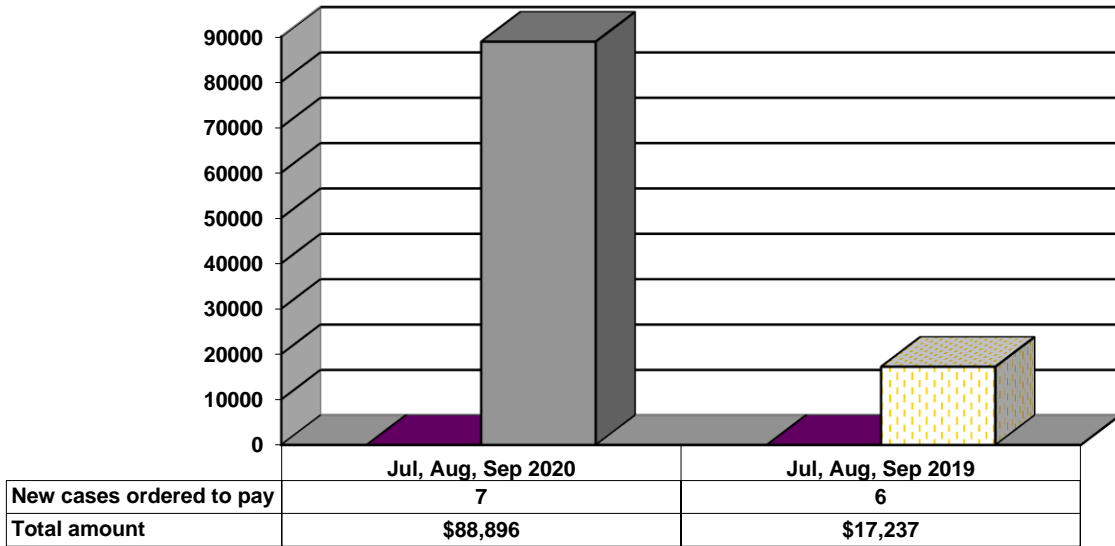
**Gender Demographics for Adult Intakes**



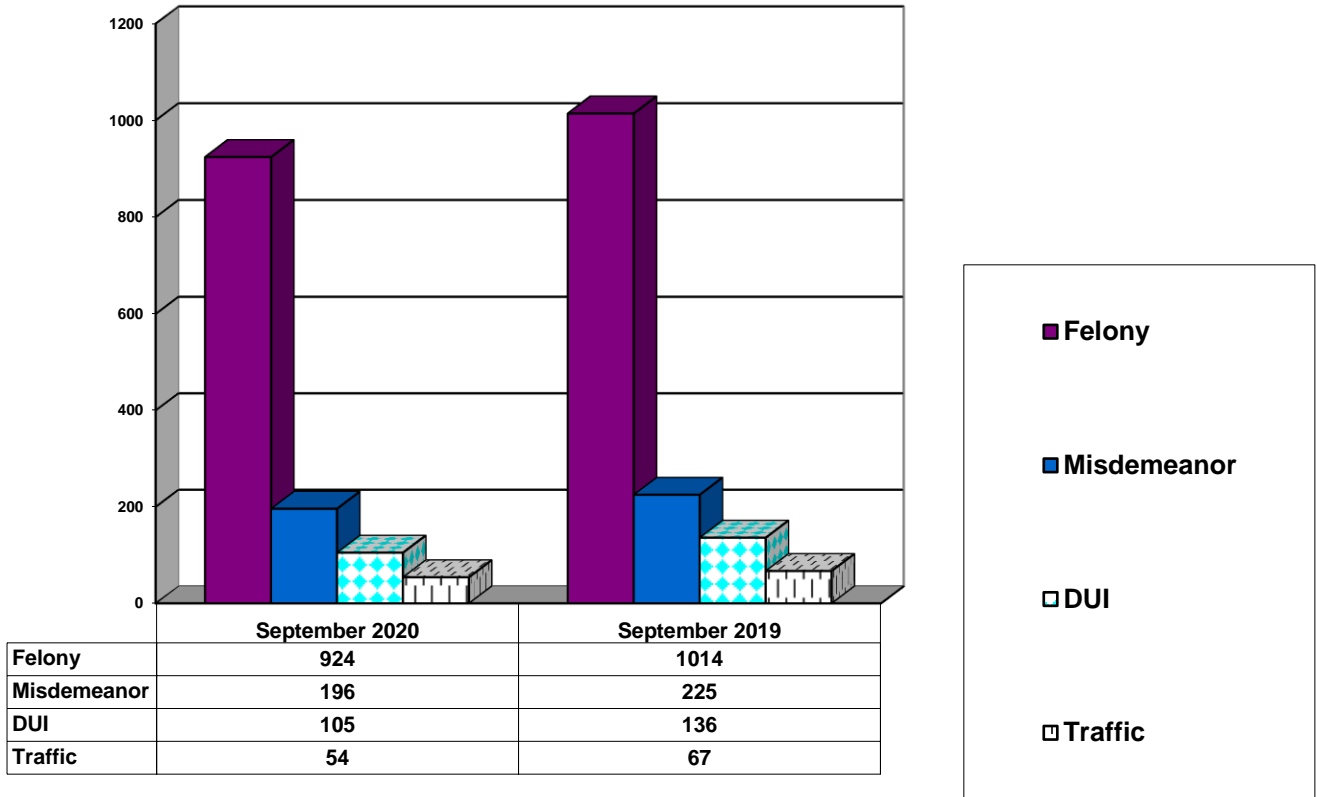
### Age Demographics for Adult Intakes



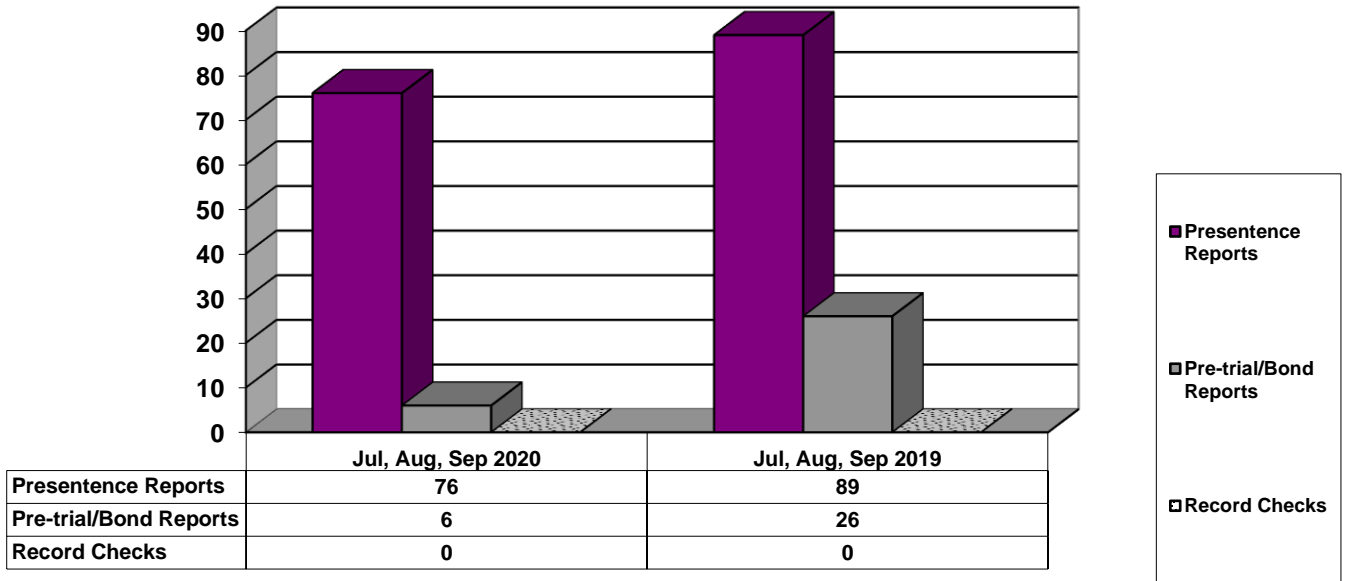
### Restitution Ordered in New Adult Cases



### Breakdown of Adult Caseload at End of Reporting Periods



### Adult Investigations Completed



### Commitments to Illinois Department of Corrections

