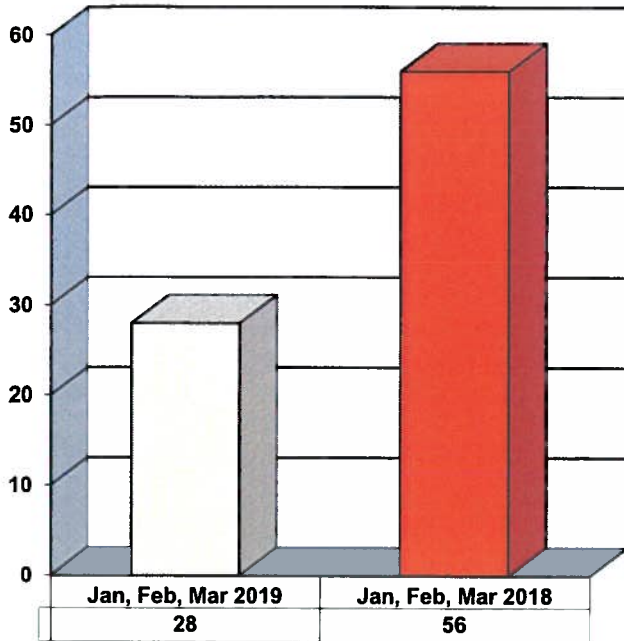
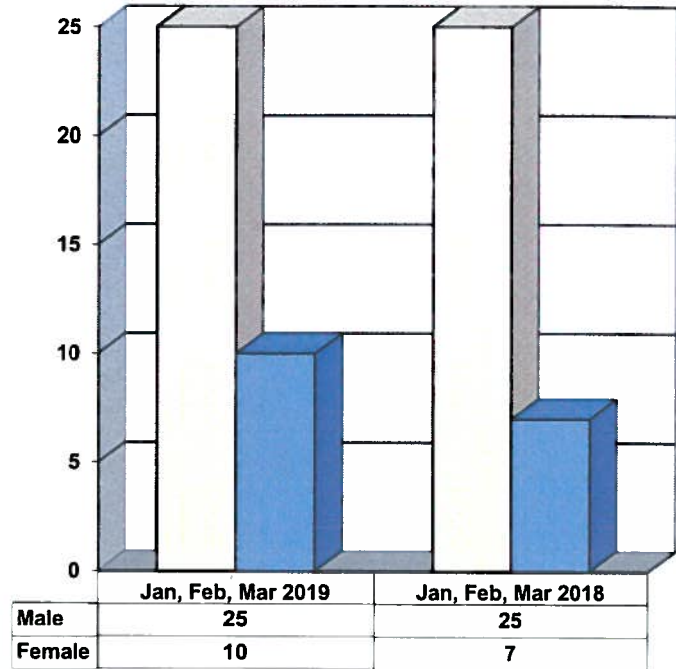


**JUVENILE SUPERVISION INFORMATION  
MONTHS OF JANUARY, FEBRUARY AND MARCH 2019  
(Compared to Prior Year)**

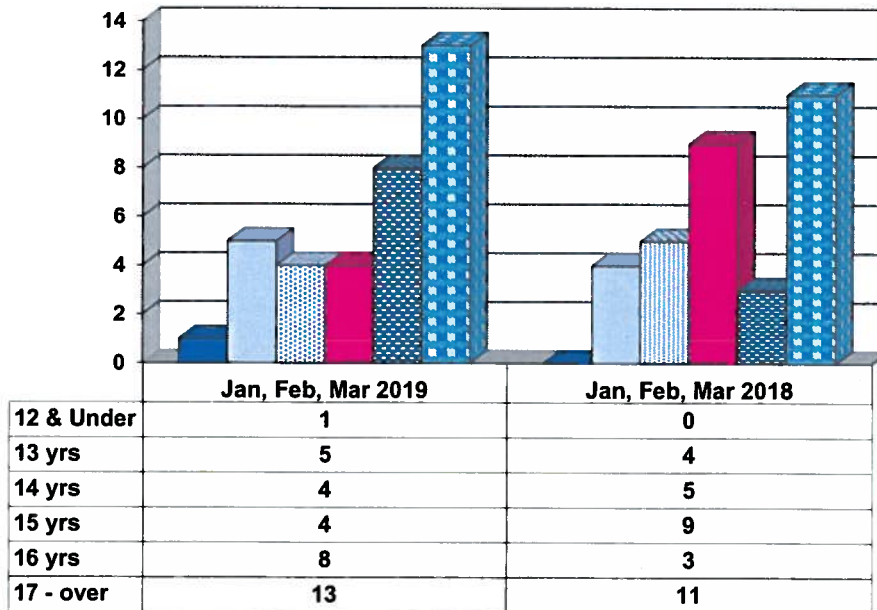
**Juvenile Delinquency Petitions Filed**



**Gender Demographics for Juvenile Admissions**

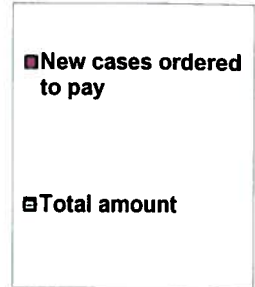
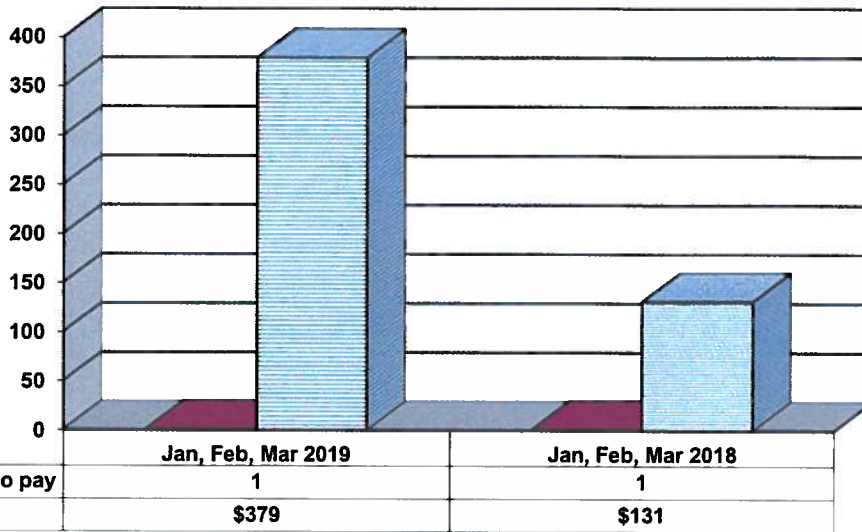


**Age Demographics for Juvenile Admissions**

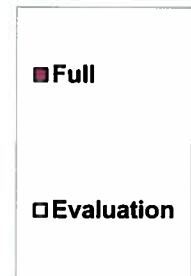
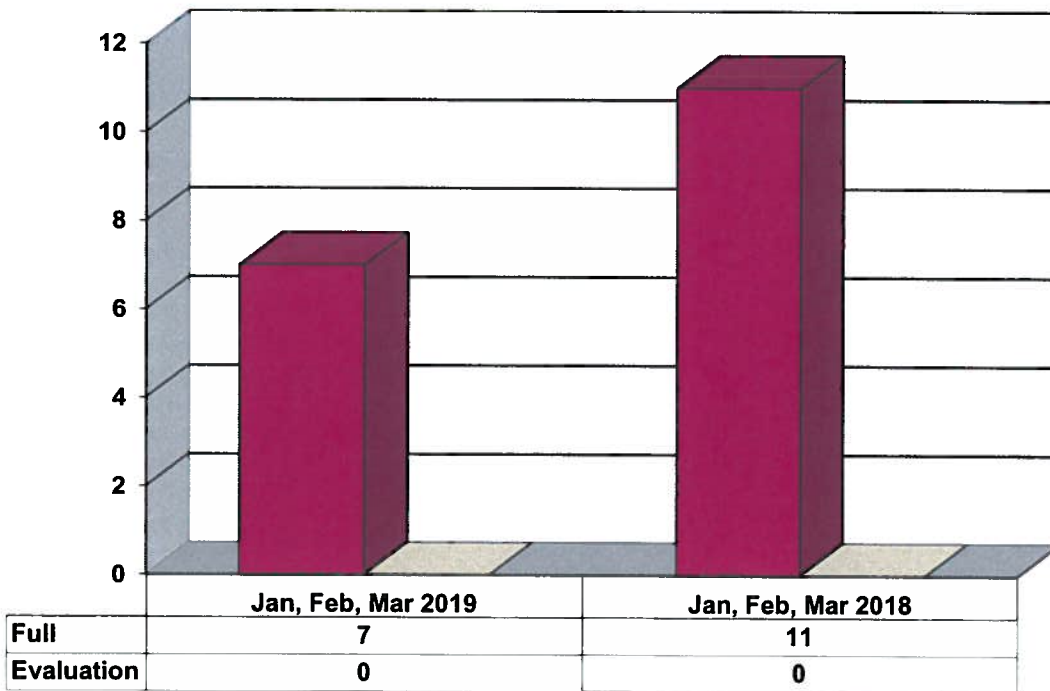


12 & Under
  13 yrs
  14 yrs
  15 yrs
  16 yrs
  17 - over

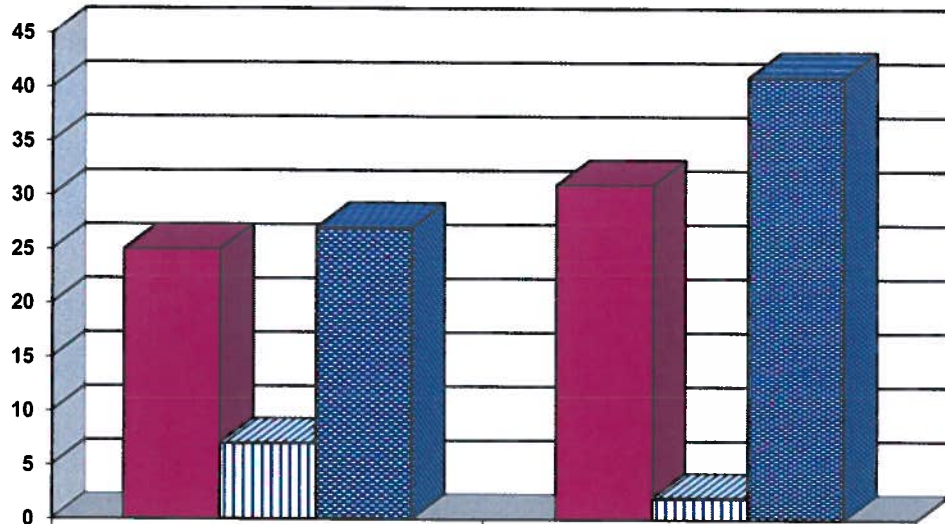
### Restitution Ordered in New Juvenile Cases



### Commitments to Illinois Department of Juvenile Justice



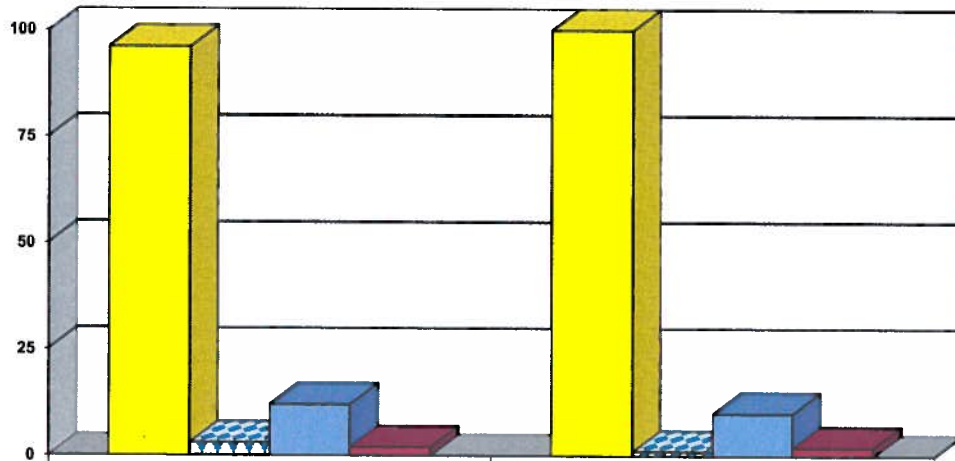
### Investigations Completed by Juvenile Division



	Jan, Feb, Mar 2019	Jan, Feb, Mar 2018
Social Histories	25	31
Supplemental Social History	7	2
Remission/Review	27	41

■ Social Histories      ■ Supplemental Social History      ■ Remission/Review

### Juvenile Caseload at End of Reporting Periods

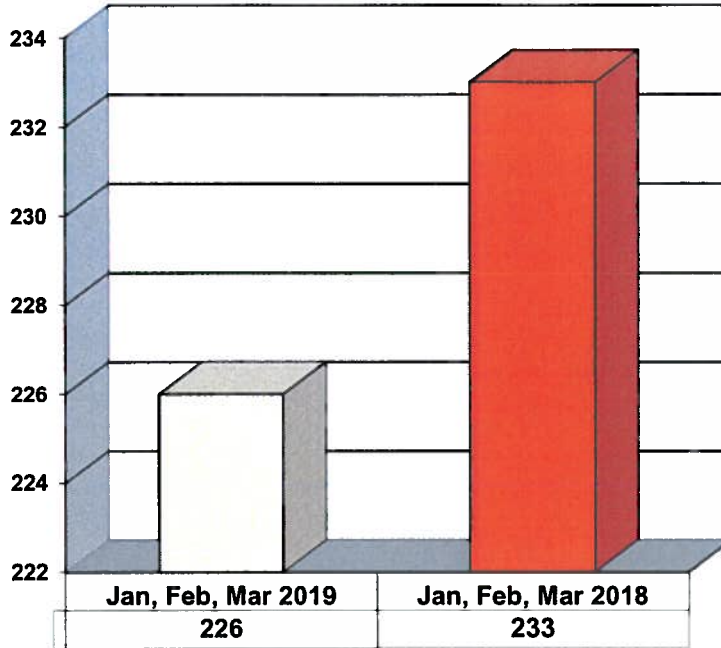


	March 2019	March 2018
Probation	96	100
Continued under Supervision	3	1
Informal	12	10
Other	2	2

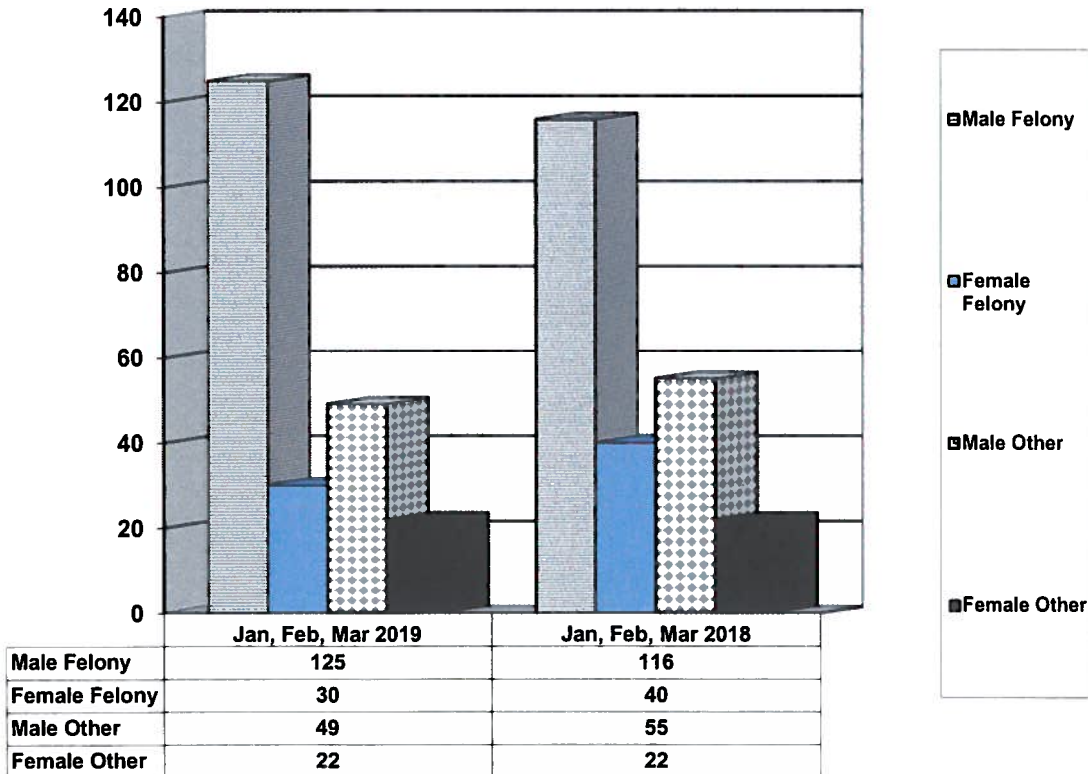
■ Probation      ■ Continued under Supervision      ■ Informal      ■ Other

**ADULT SUPERVISION INFORMATION  
MONTHS OF JANUARY, FEBRUARY AND MARCH 2019  
(Compared to Prior Year)**

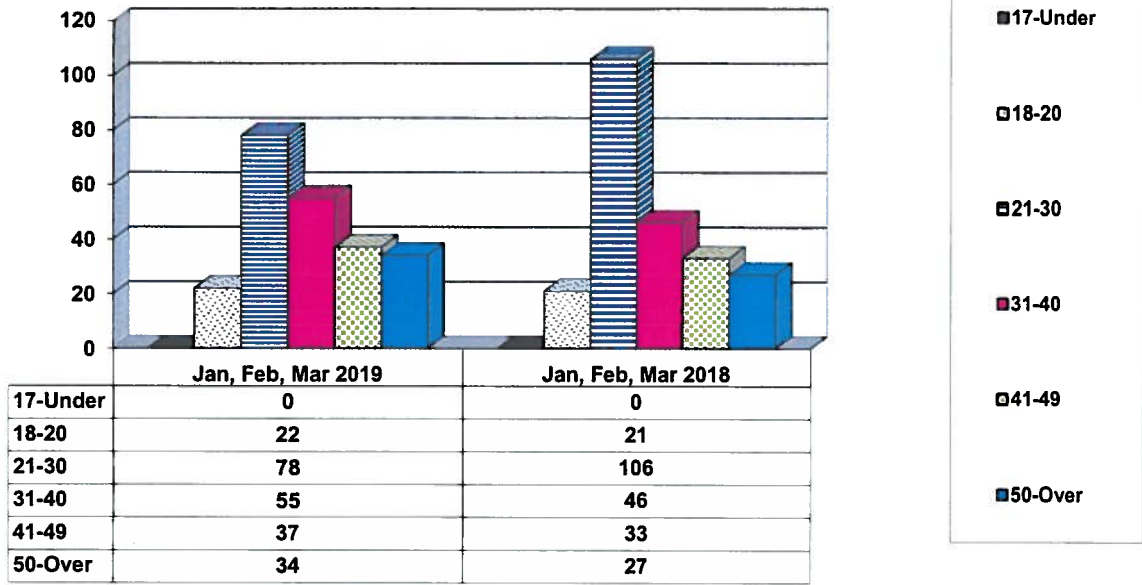
**Adult Intakes Completed**



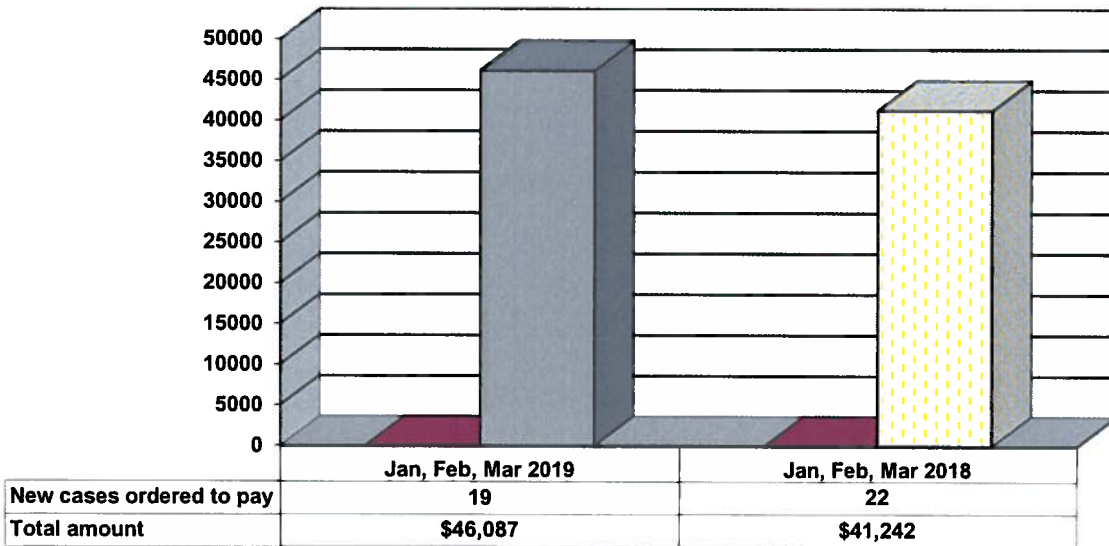
**Gender Demographics for Adult Intakes**



### Age Demographics for Adult Intakes

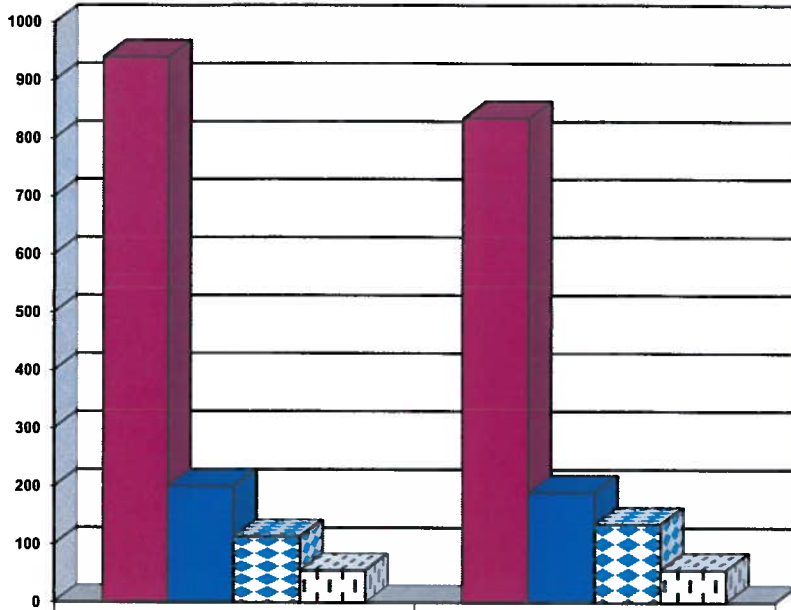


### Restitution Ordered in New Adult Cases

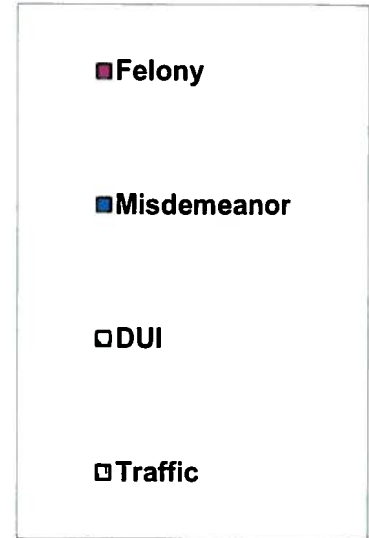




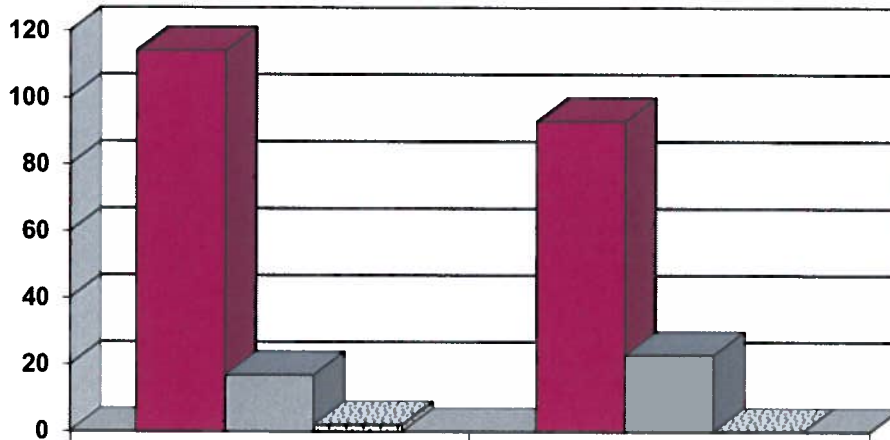
### Breakdown of Adult Caseload at End of Reporting Periods



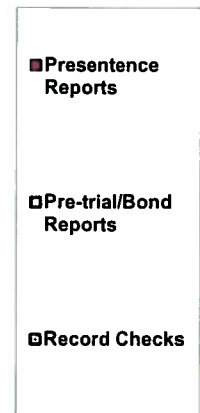
	March 2019	March 2018
<b>Felony</b>	<b>940</b>	<b>835</b>
<b>Misdemeanor</b>	<b>200</b>	<b>190</b>
<b>DUI</b>	<b>113</b>	<b>135</b>
<b>Traffic</b>	<b>55</b>	<b>56</b>



### Adult Investigations Completed



	Jan, Feb, Mar 2019	Jan, Feb, Mar 2018
<b>Presentence Reports</b>	<b>114</b>	<b>93</b>
<b>Pre-trial/Bond Reports</b>	<b>17</b>	<b>23</b>
<b>Record Checks</b>	<b>2</b>	<b>0</b>



### Commitments to Illinois Department of Corrections

