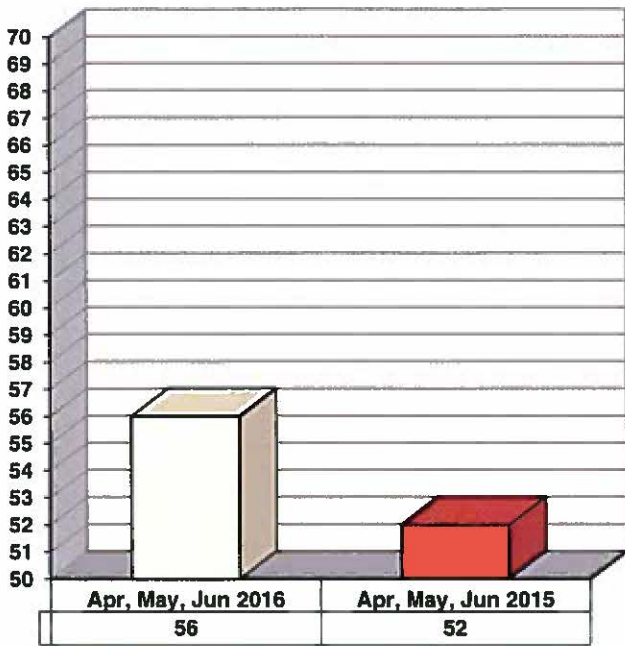
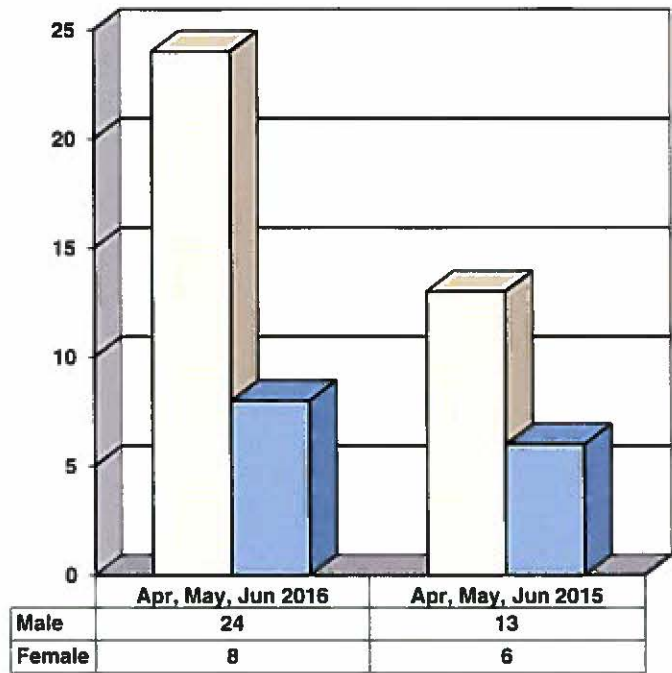


**JUVENILE SUPERVISION INFORMATION  
MONTHS OF APRIL, MAY AND JUNE 2016  
(Compared to Prior Year)**

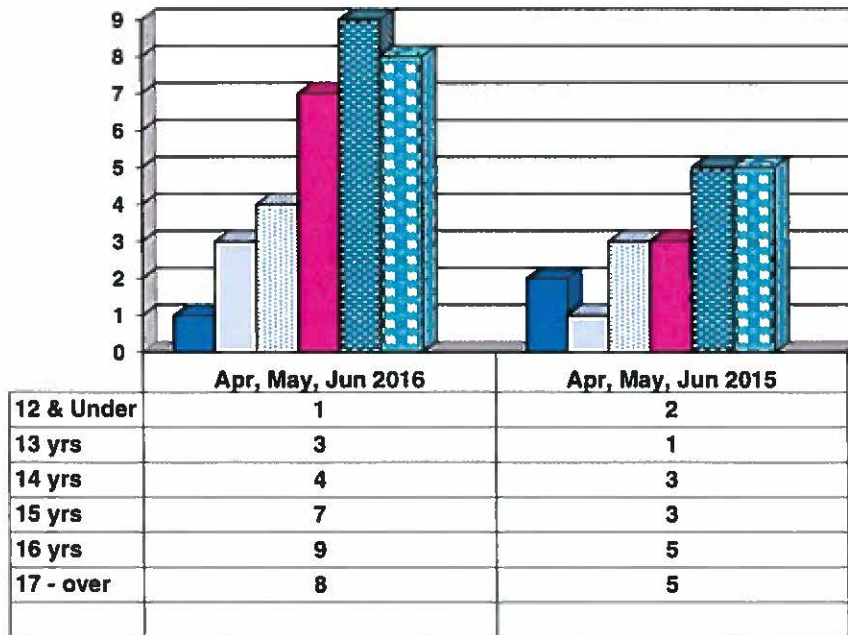
**Juvenile Delinquency Petitions Filed**



**Gender Demographics for Juvenile Admissions**

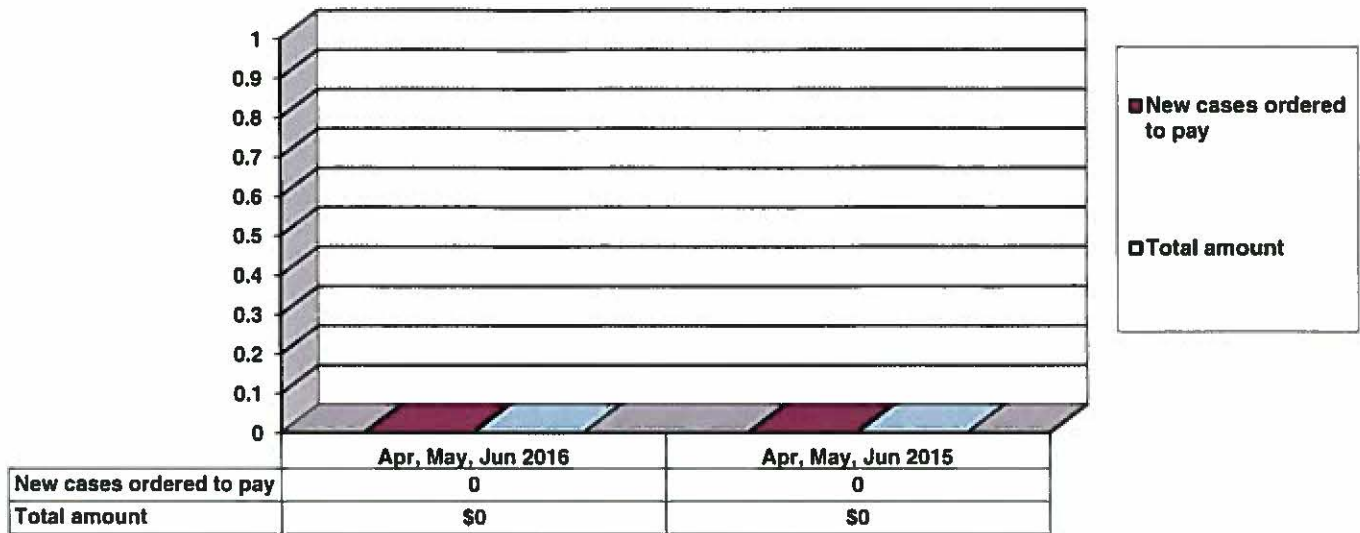


**Age Demographics for Juvenile Admissions**

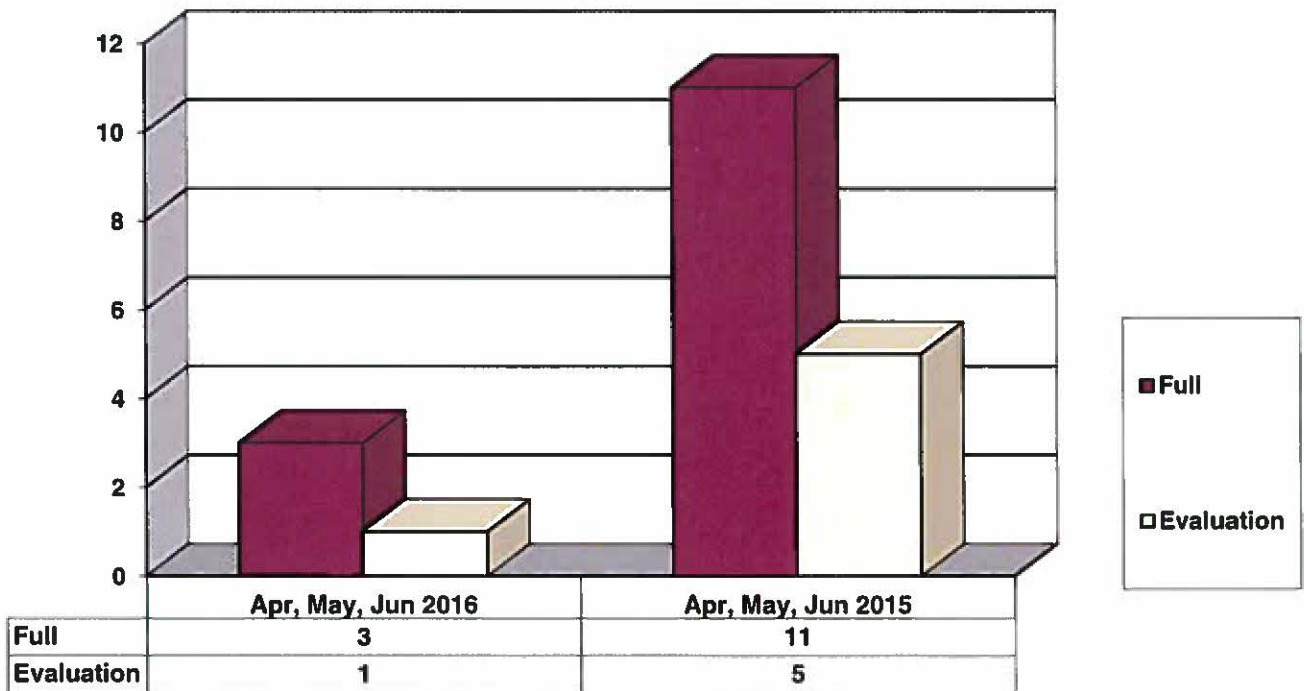


12 & Under
  13 yrs
  14 yrs
  15 yrs
  16 yrs
  17 - over

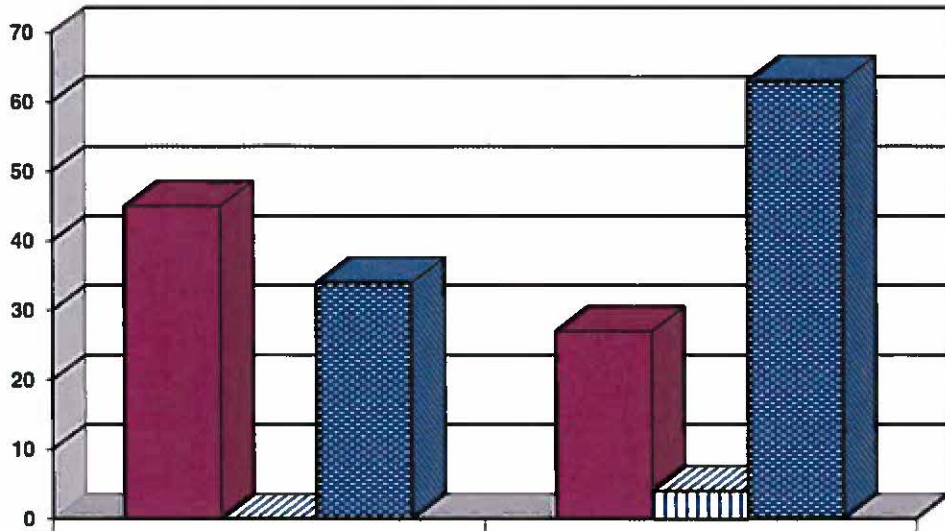
### Restitution Ordered in New Juvenile Cases



### Commitments to Illinois Department of Juvenile Justice



### Investigations Completed by Juvenile Division



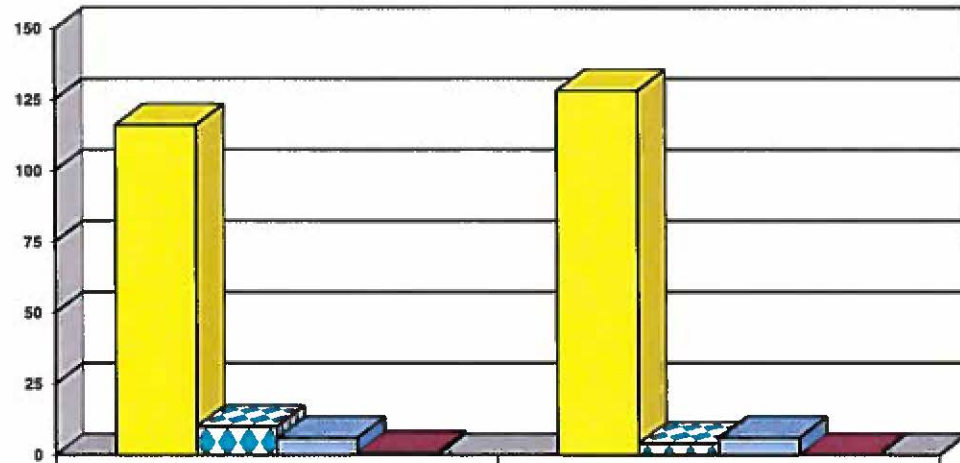
	Apr, May, Jun 2016	Apr, May, Jun 2015
Social Histories	45	27
Supplemental Social History	0	4
Remission/Review	34	63

■ Social Histories

▨ Supplemental Social History

■ Remission/Review

### Juvenile Caseload at End of Reporting Periods



	June 2016	June 2015
Probation	116	128
Continued under Supervision	10	4
Informal	6	6
Other	1	0

■ Probation

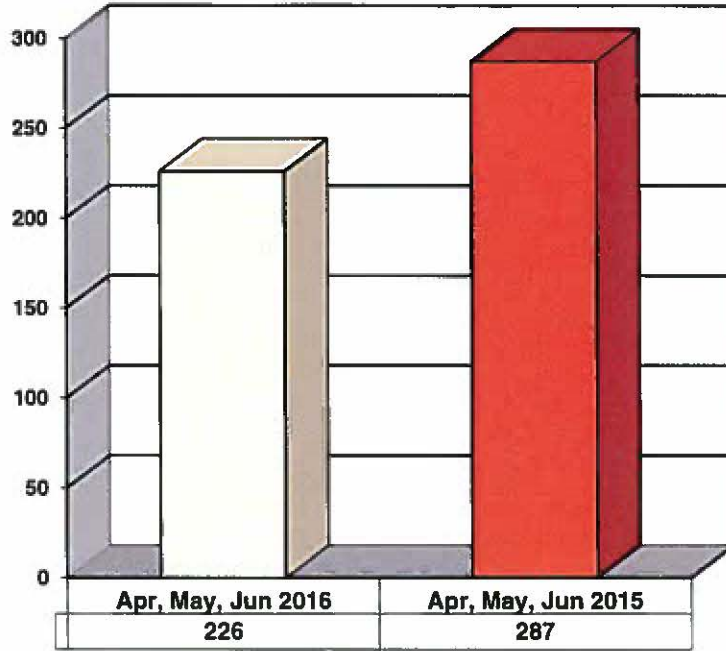
▨ Continued under Supervision

■ Informal

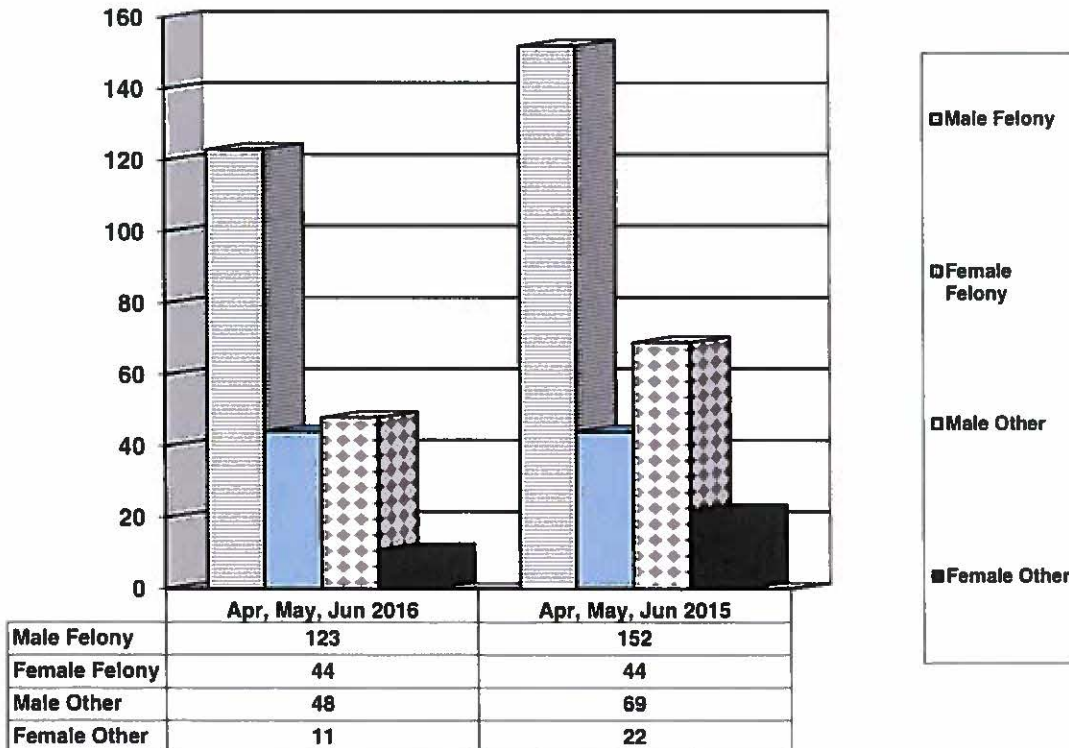
■ Other

**ADULT SUPERVISION INFORMATION  
MONTHS OF APRIL, MAY AND JUNE 2016  
(Compared to Prior Year)**

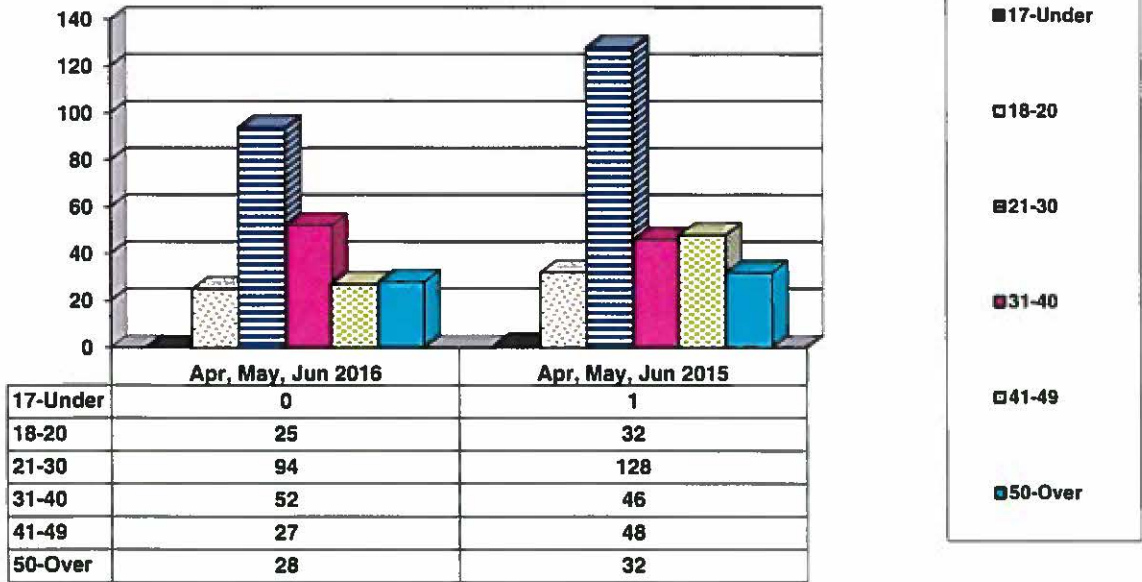
**Adult Intakes Completed**



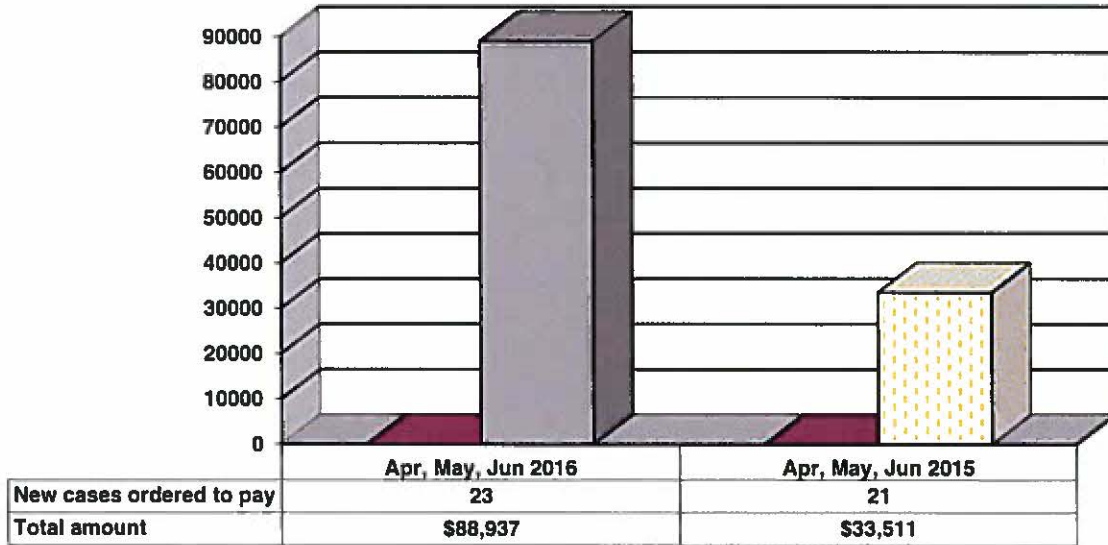
**Gender Demographics for Adult Intakes**



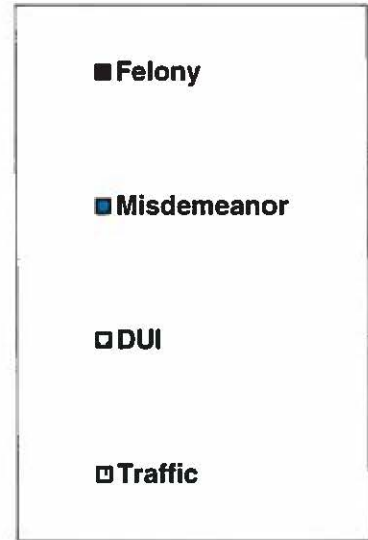
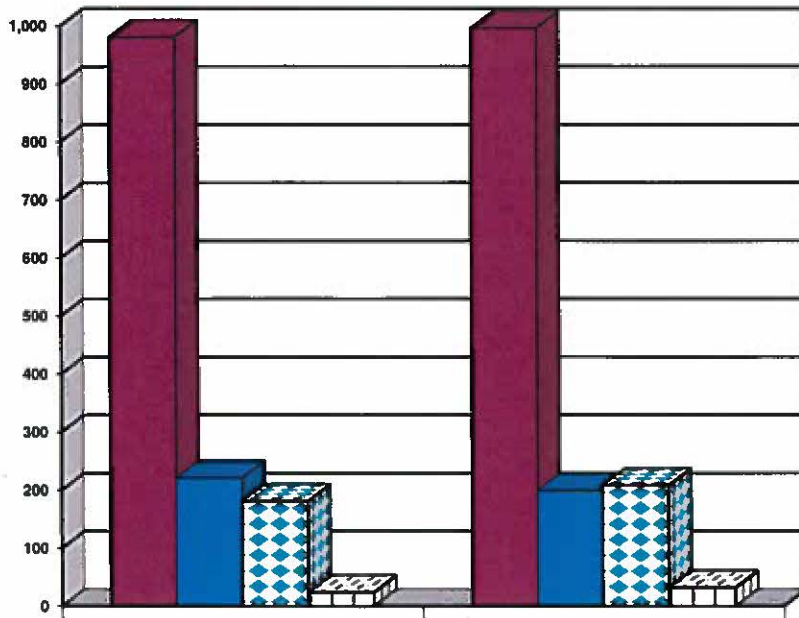
### Age Demographics for Adult Intakes



### Restitution Ordered in New Adult Cases

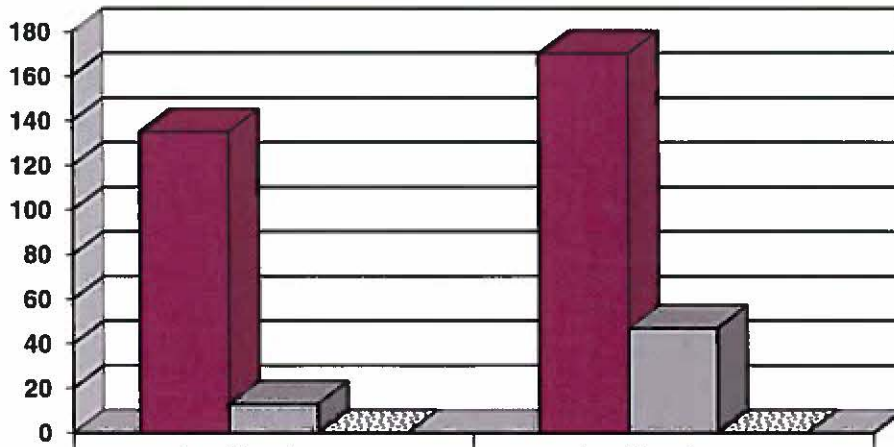


### Breakdown of Adult Caseload at End of Reporting Periods



	June 2016	June 2015
Felony	980	995
Misdemeanor	221	199
DUI	181	208
Traffic	24	32

### Adult Investigations Completed



	Apr, May, Jun 2016	Apr, May, Jun 2015
Presentence Reports	135	170
Pre-trial/Bond Reports	13	47
Record Checks	0	0

### Commitments to Illinois Department of Corrections

