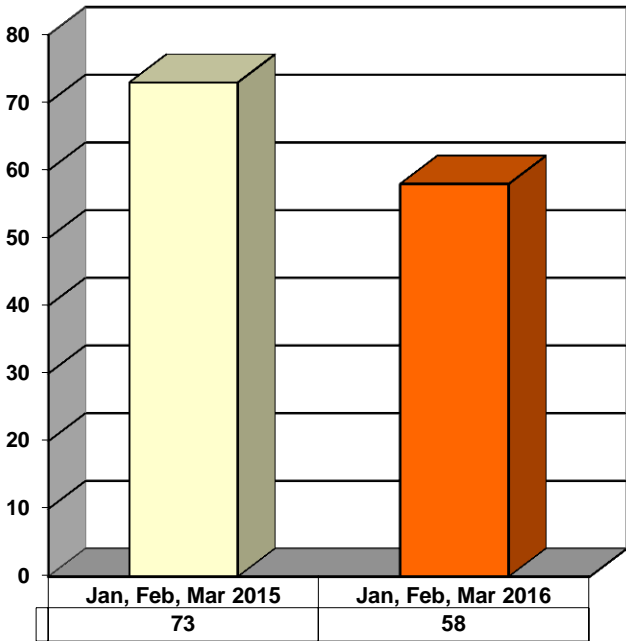
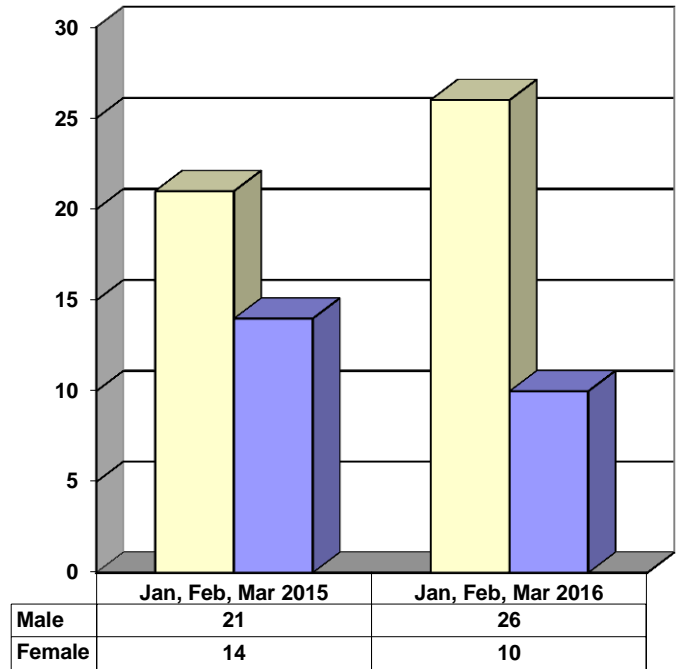


**JUVENILE SUPERVISION INFORMATION
MONTHS OF JANUARY, FEBRUARY AND MARCH 2016
(Compared to Prior Year)**

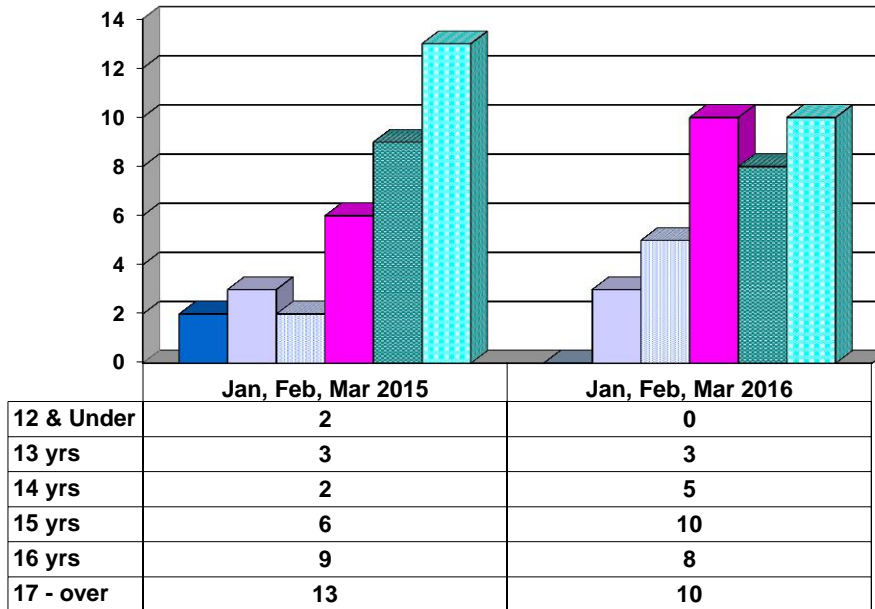
Juvenile Delinquency Petitions Filed



Gender Demographics for Juvenile Admissions

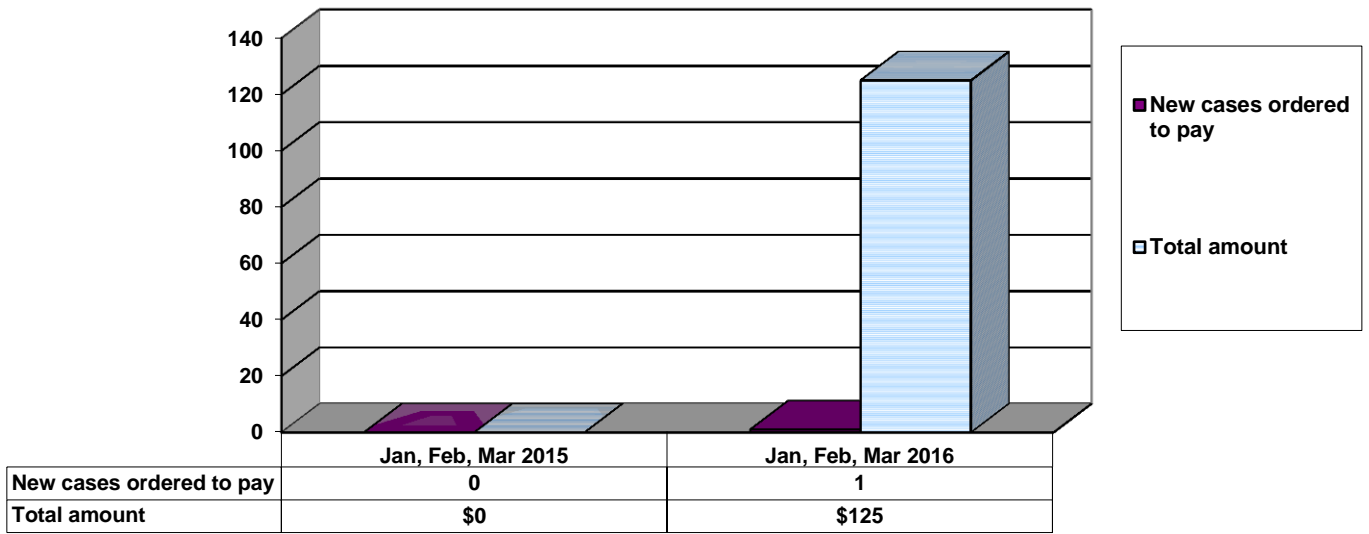


Age Demographics for Juvenile Admissions

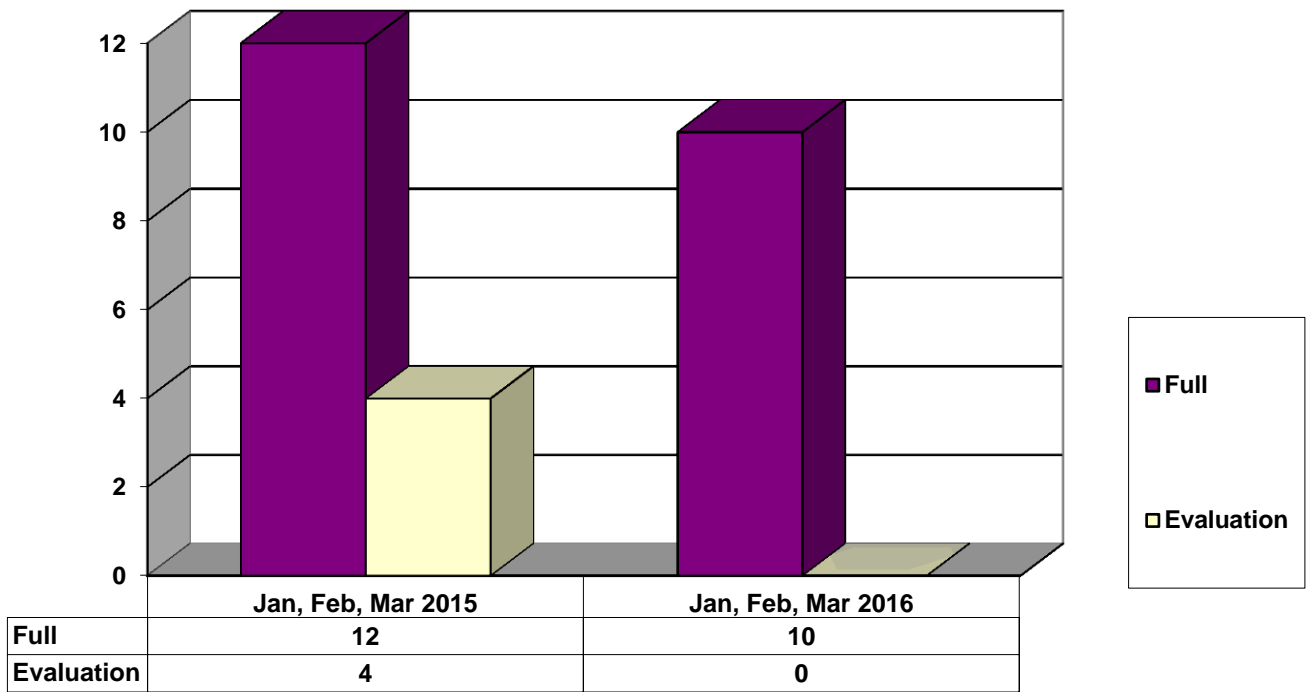


■ 12 & Under
 ■ 13 yrs
 ■ 14 yrs
 ■ 15 yrs
 ■ 16 yrs
 ■ 17 - over

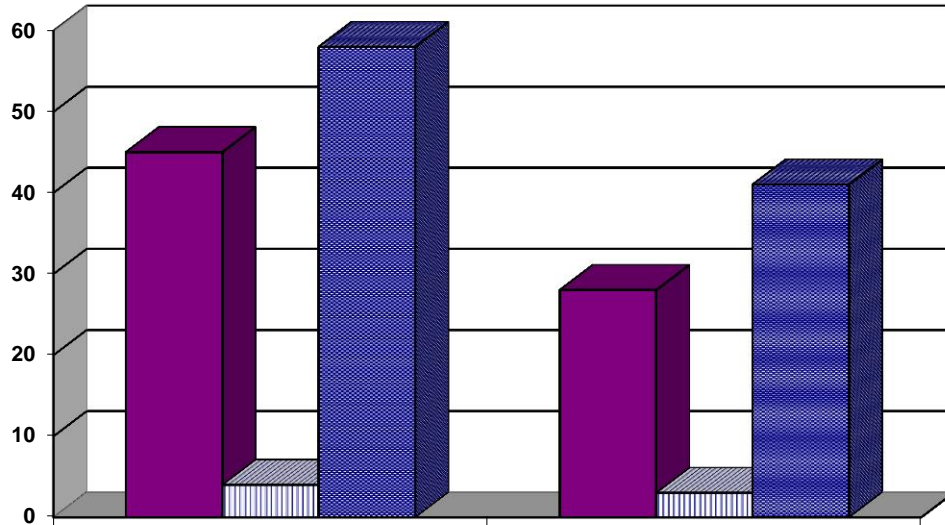
Restitution Ordered in New Juvenile Cases



Commitments to Illinois Department of Juvenile Justice



Investigations Completed by Juvenile Division



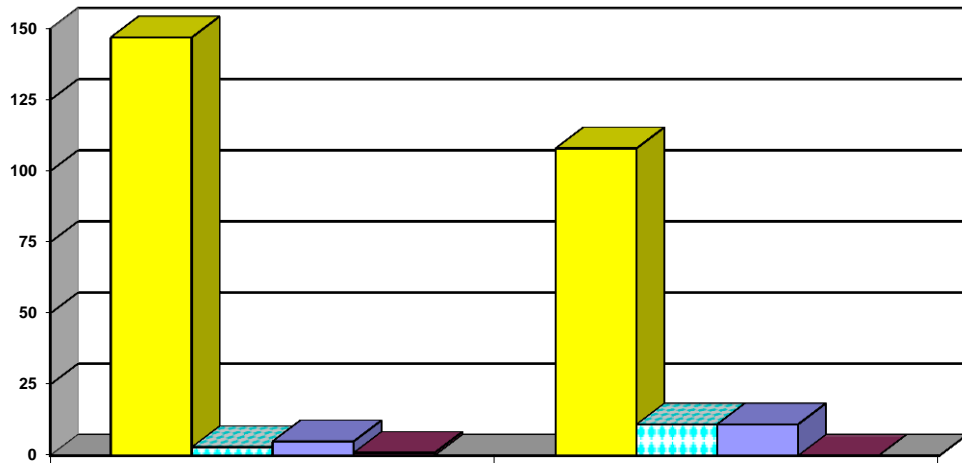
	Jan, Feb, Mar 2015	Jan, Feb, Mar 2016
Social Histories	45	28
Supplemental Social History	4	3
Remission/Review	58	41

■ Social Histories

▨ Supplemental Social History

■ Remission/Review

Juvenile Caseload at End of Reporting Periods



	March 2015	March 2016
Probation	147	108
Continued under Supervision	3	11
Informal	5	11
Other	1	0

■ Probation

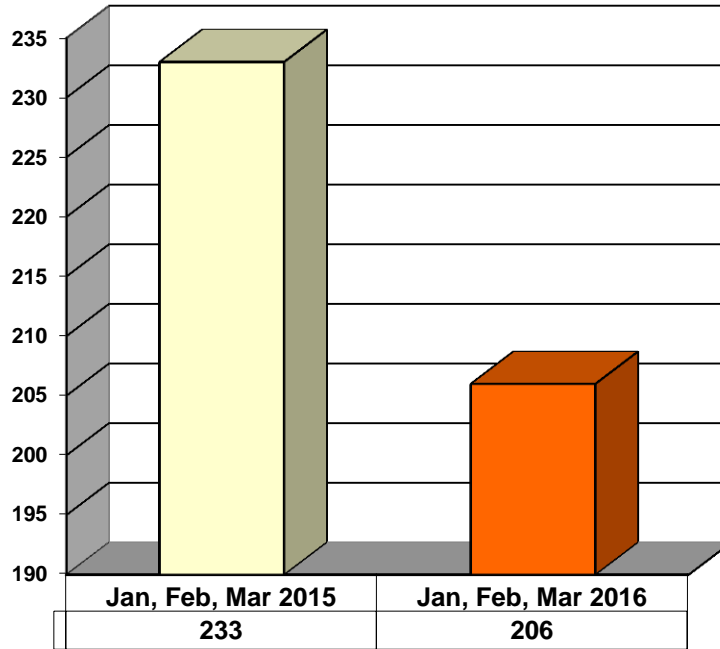
▨ Continued under Supervision

■ Informal

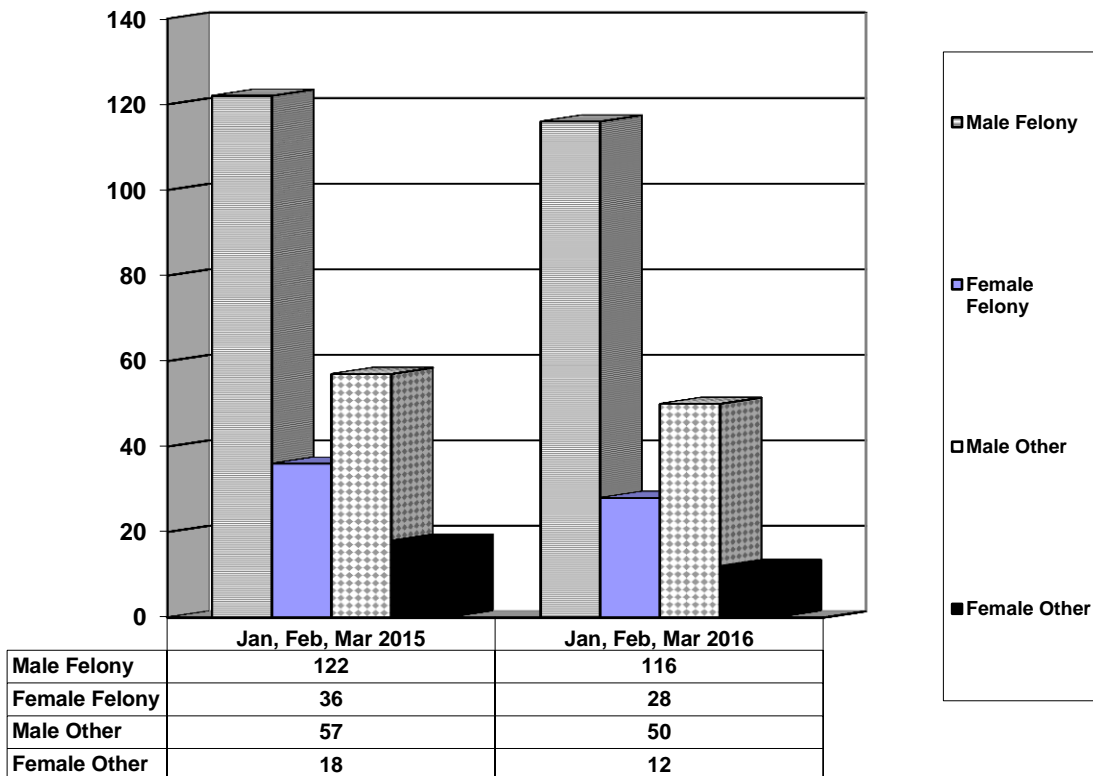
■ Other

**ADULT SUPERVISION INFORMATION
MONTHS OF JANUARY, FEBRUARY AND MARCH 2016
(Compared to Prior Year)**

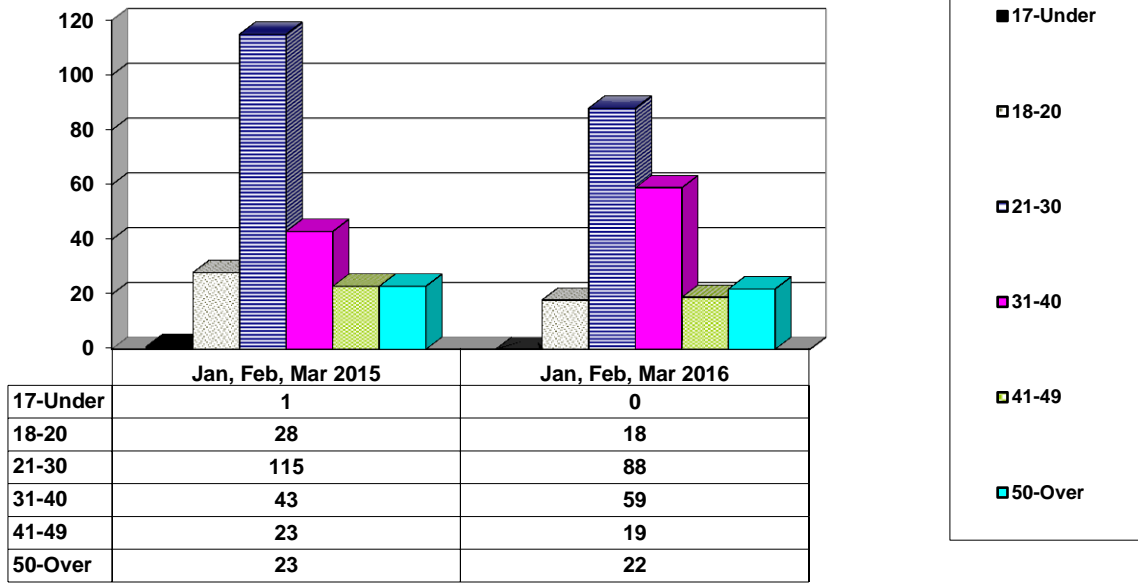
Adult Intakes Completed



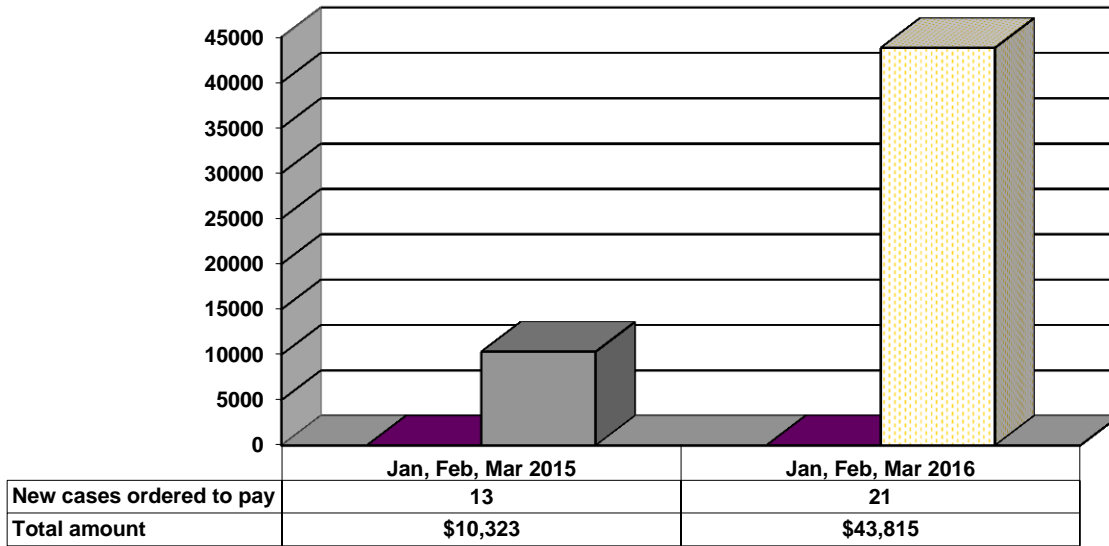
Gender Demographics for Adult Intakes



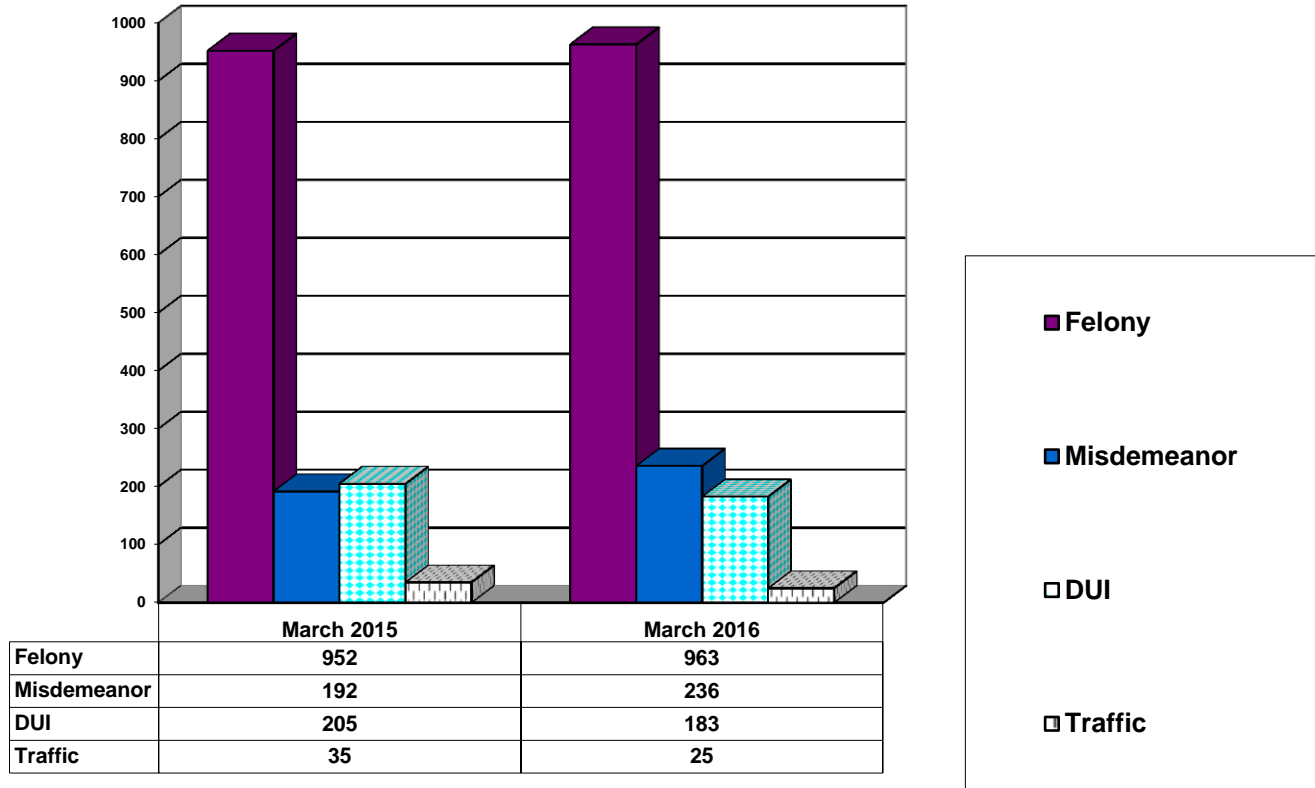
Age Demographics for Adult Intakes



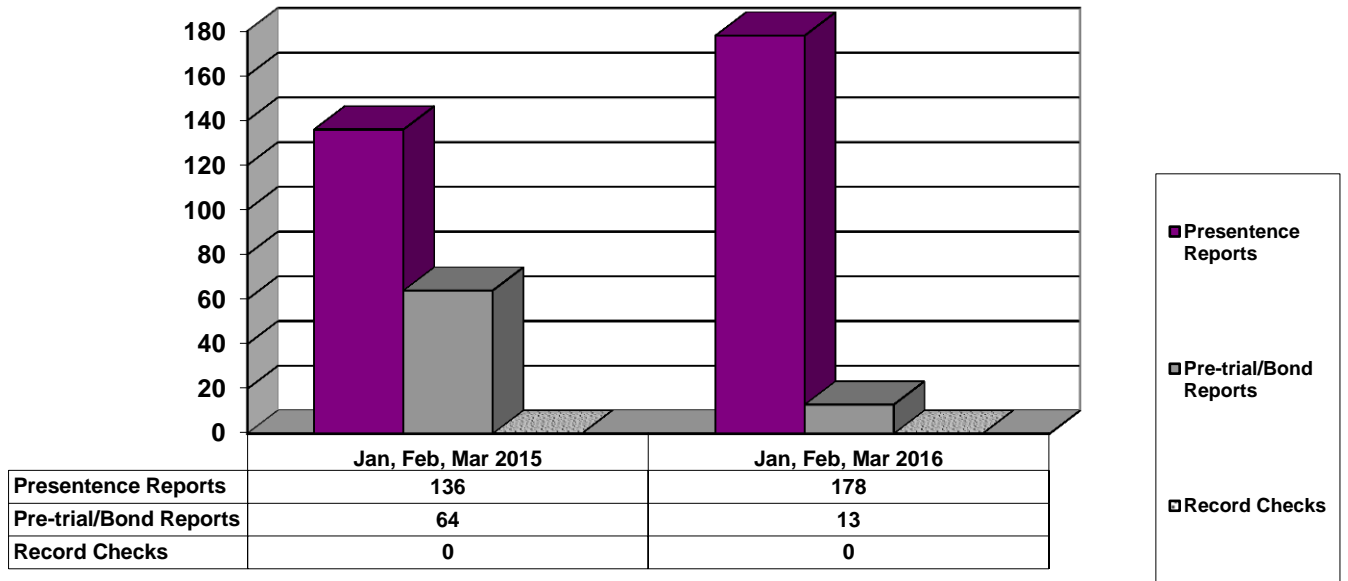
Restitution Ordered in New Adult Cases



Breakdown of Adult Caseload at End of Reporting Periods



Adult Investigations Completed



Commitments to Illinois Department of Corrections

