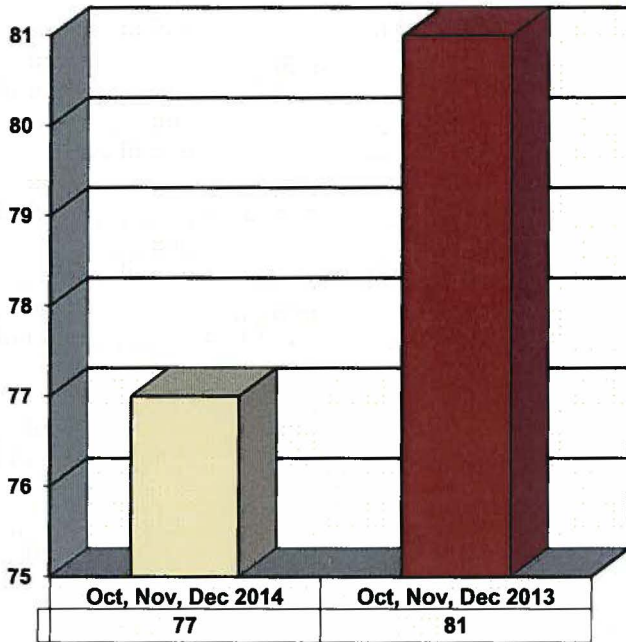
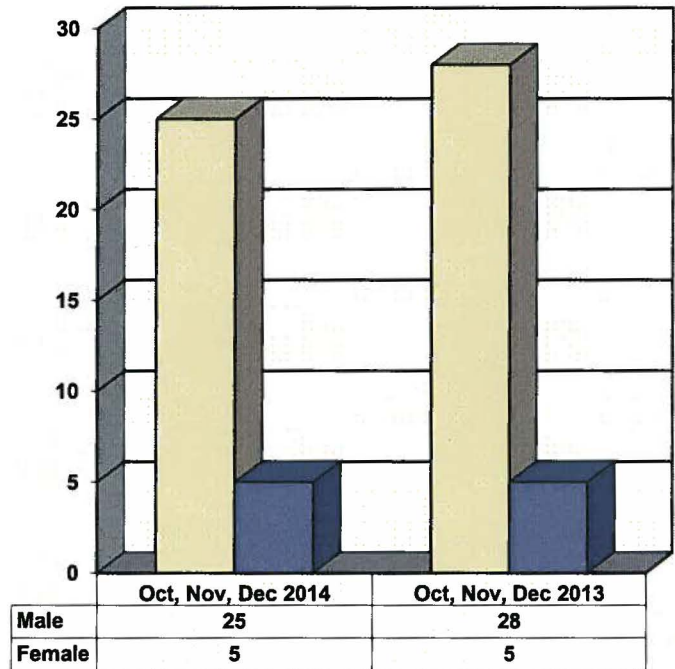


**JUVENILE SUPERVISION INFORMATION
MONTHS OF OCTOBER, NOVEMBER AND DECEMBER 2014
(Compared to Prior Year)**

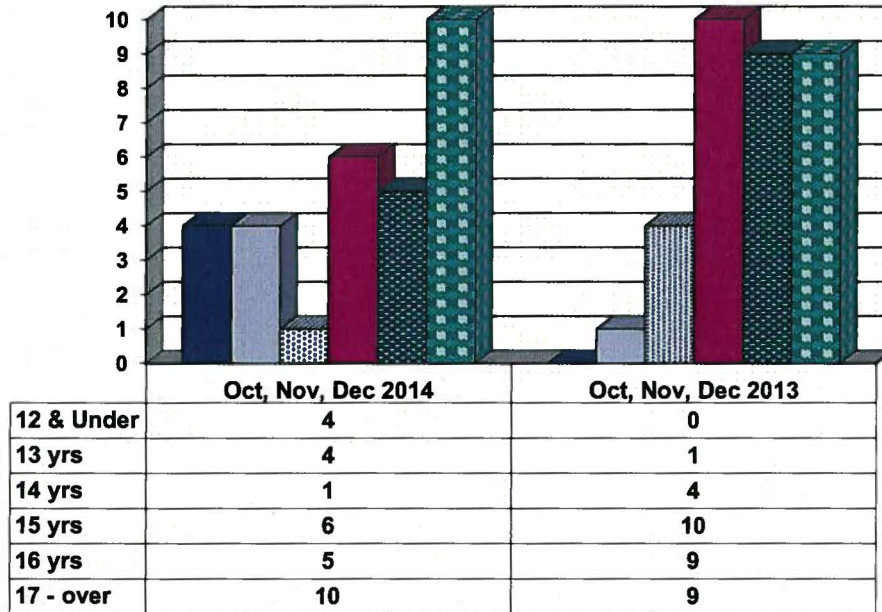
Juvenile Delinquency Petitions Filed



Demographics for Juvenile Admissions

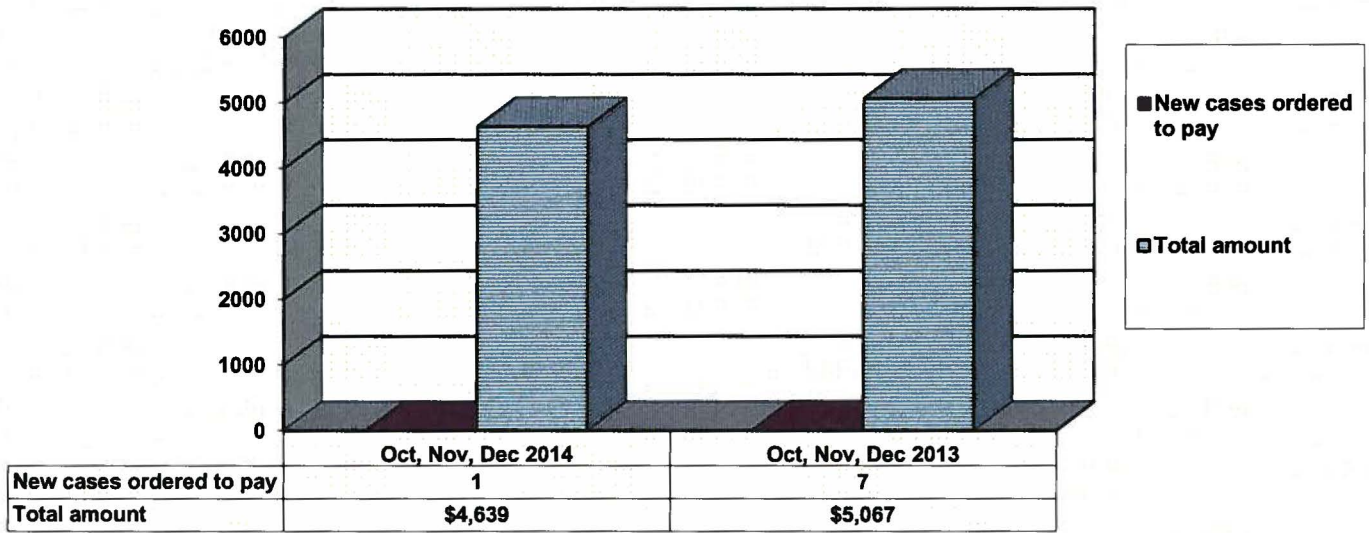


Age Demographics for Juvenile Admissions

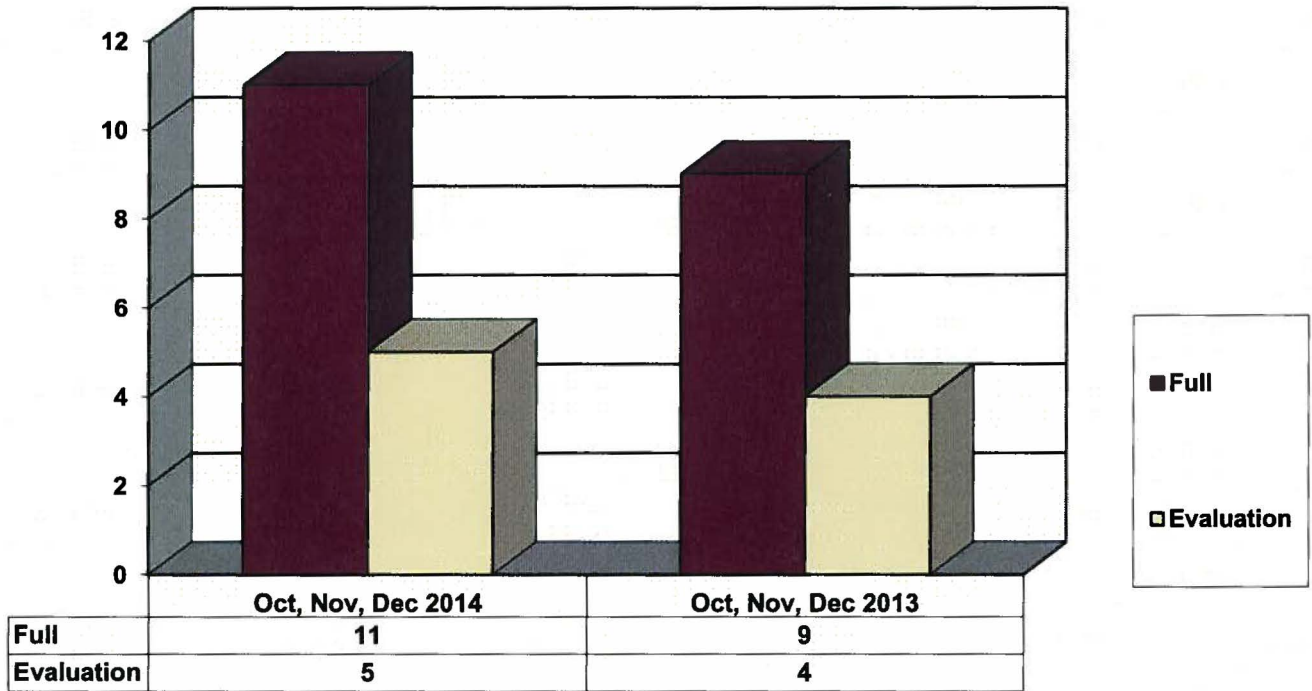


12 & Under
 13 yrs
 14 yrs
 15 yrs
 16 yrs
 17 - over

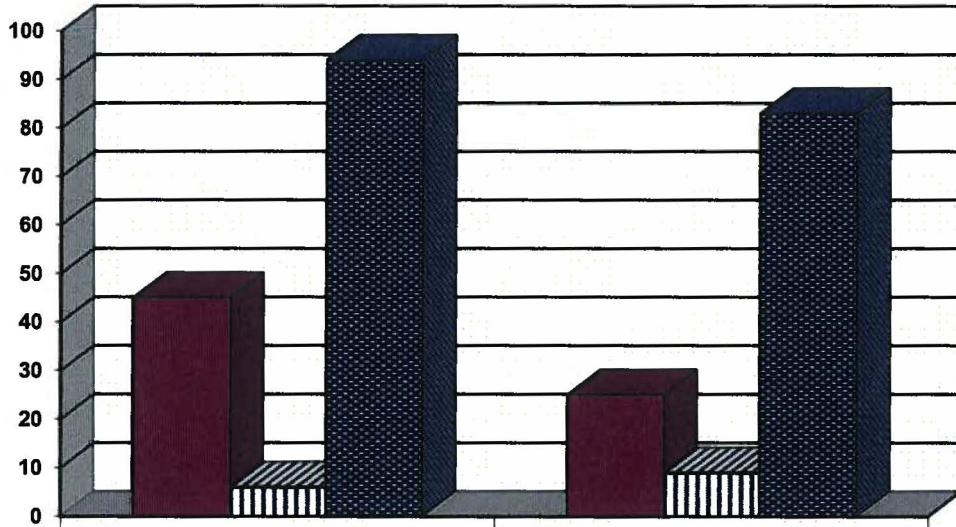
Restitution Ordered in New Juvenile Cases



Commitments to IDOJJ (Illinois Department of Juvenile Justice)



Investigations Completed by Juvenile Unit



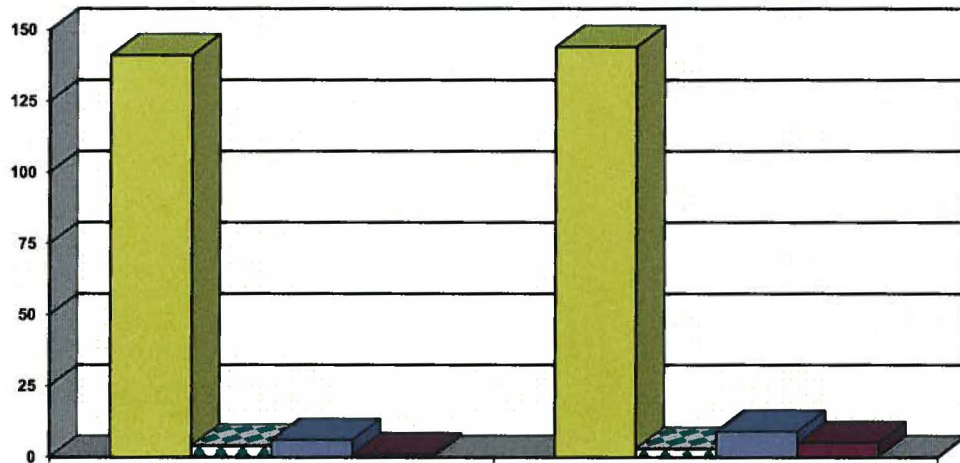
	Oct, Nov, Dec 2014	Oct, Nov, Dec 2013
Social Histories	45	25
Supplemental Social History	6	9
Remission/Review	94	83

■ Social Histories

▨ Supplemental Social History

■ Remission/Review

Juvenile Caseload at End of Reporting Periods



	December 2014	December 2013
Probation	141	144
Continued under Supervision	4	3
Informal	6	9
Other	1	5

■ Probation

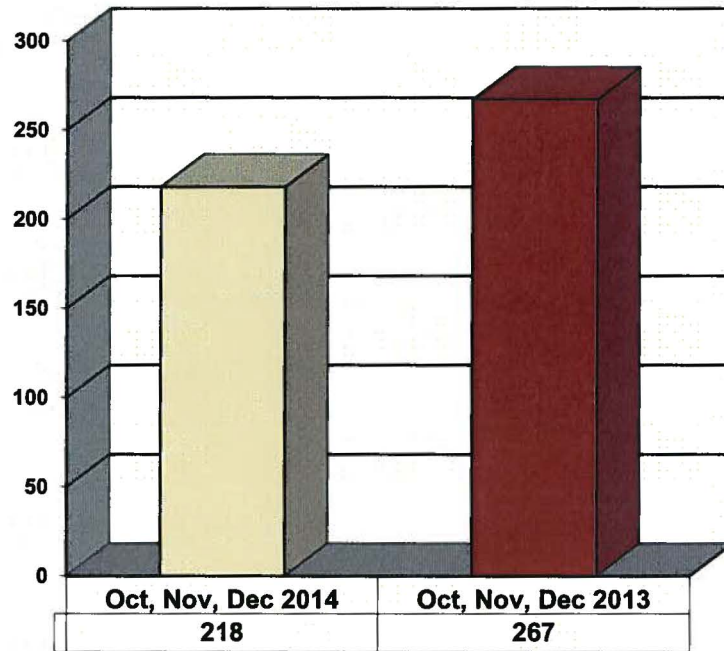
▨ Continued under Supervision

■ Informal

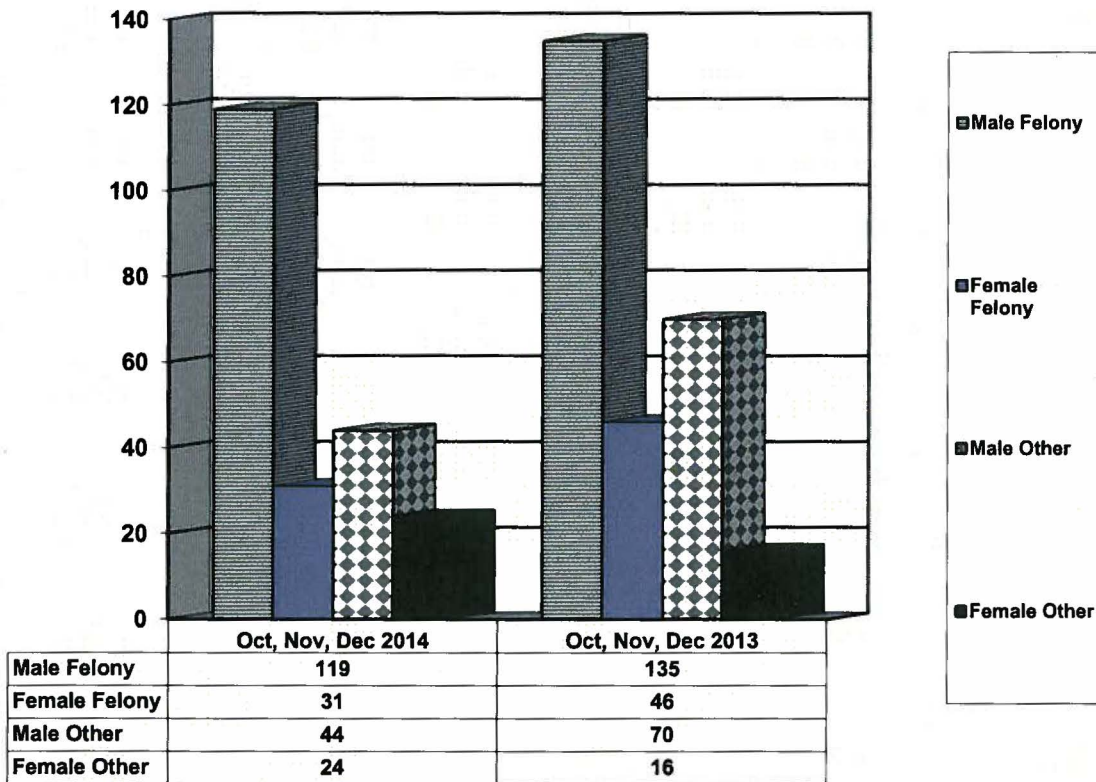
■ Other

**ADULT SUPERVISION INFORMATION
MONTHS OF OCTOBER, NOVEMBER AND DECEMBER 2014
(Compared to Prior Year)**

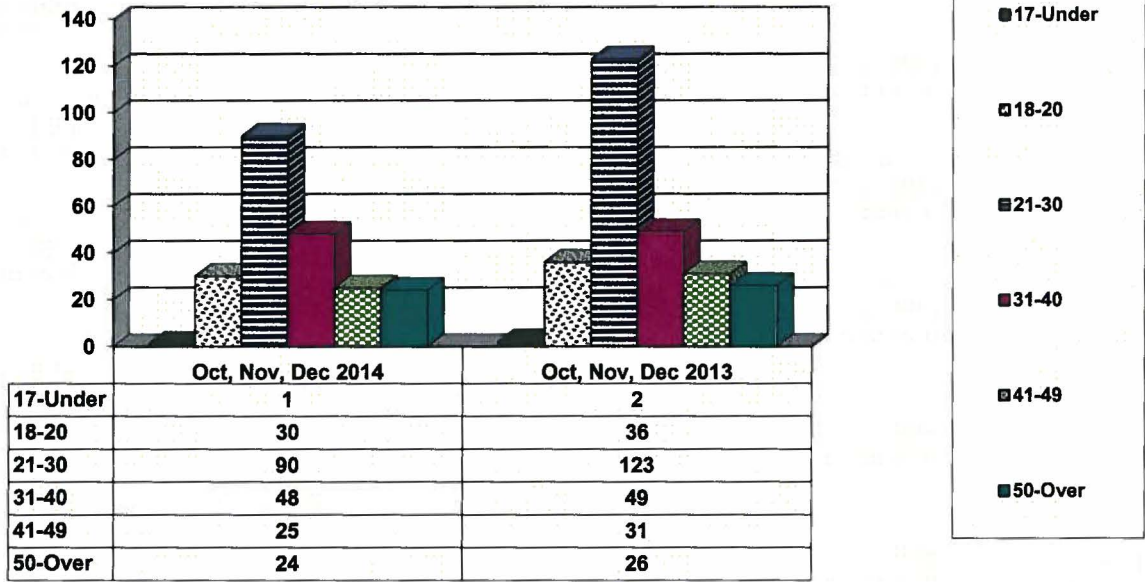
Adult Intakes Completed



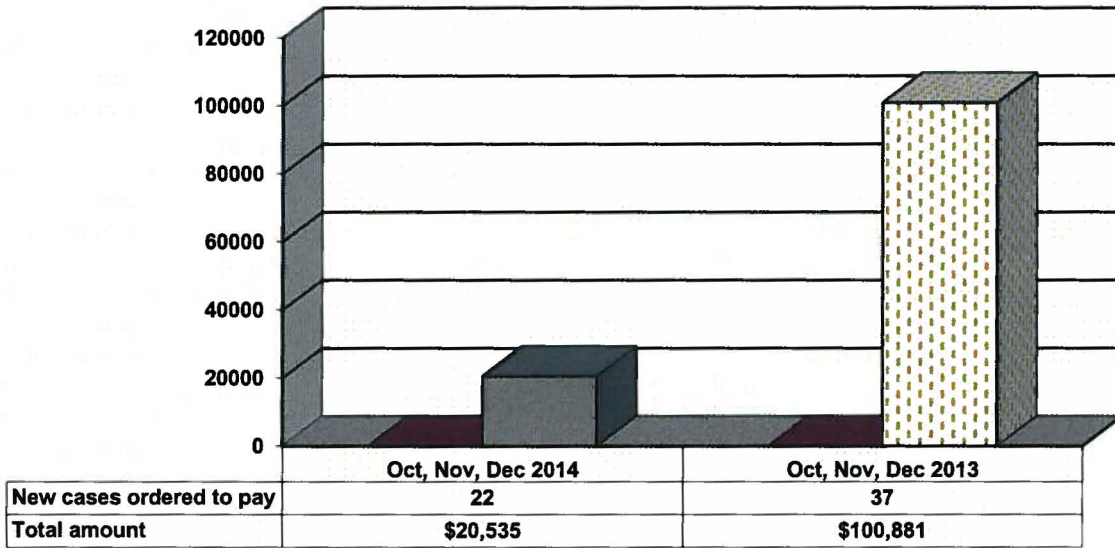
Demographics for Adult Intakes



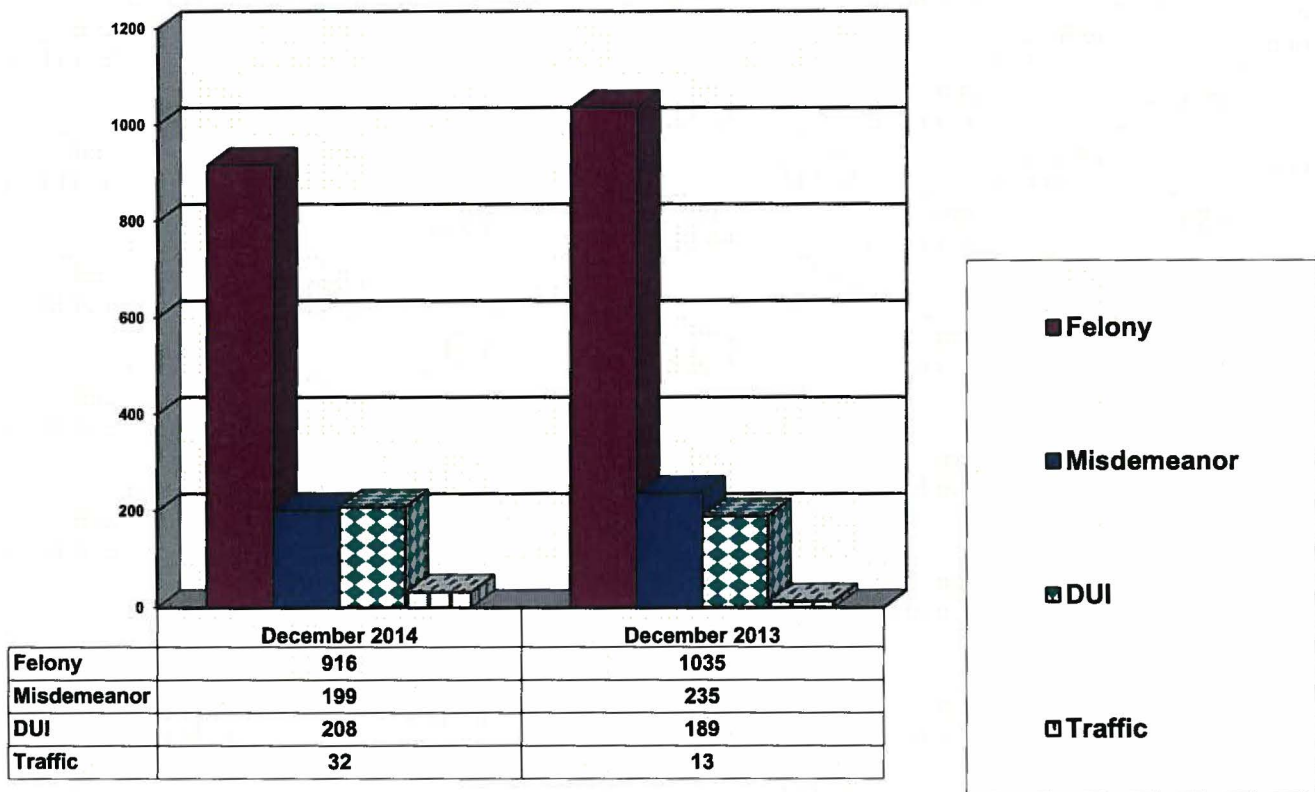
Age Demographics for Adult Intakes



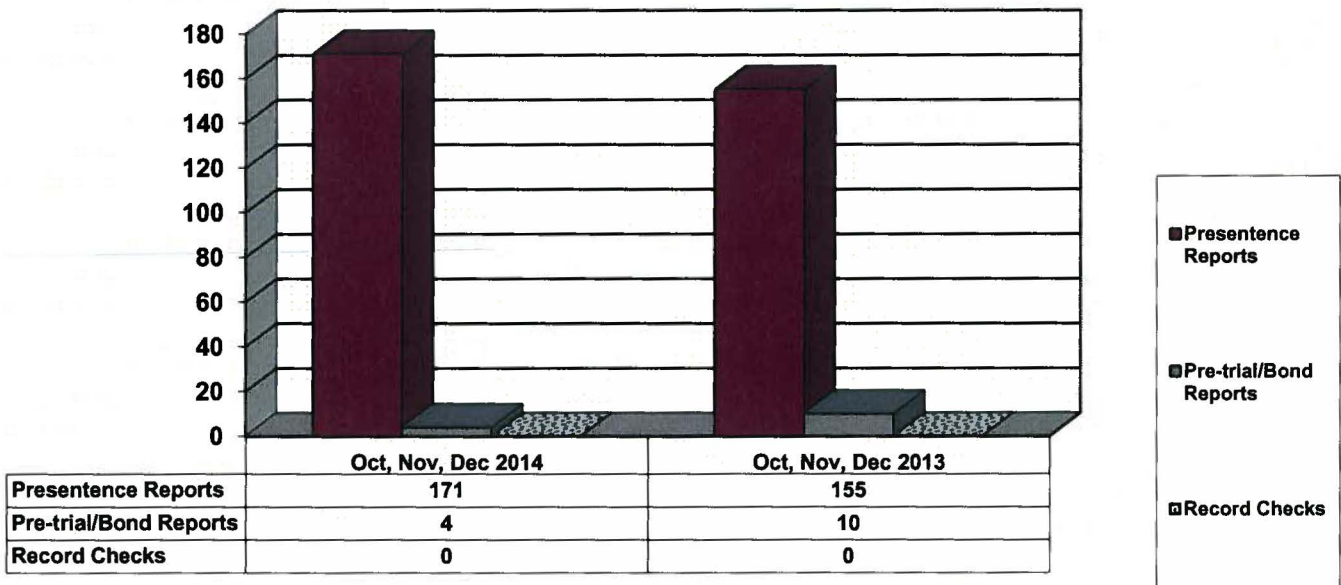
Restitution Ordered in New Adult Cases



Breakdown of Adult Caseload at End of Reporting Periods



Adult Investigations Completed



**Commitments to DOC
(Illinois Department of Corrections)**

