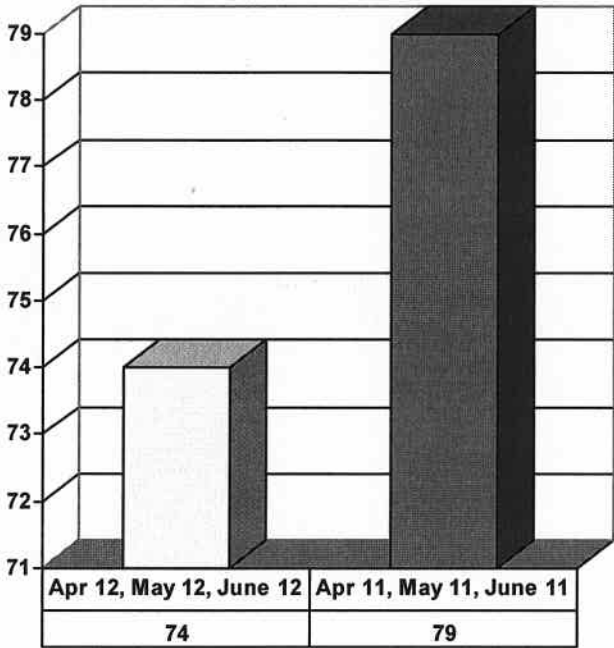
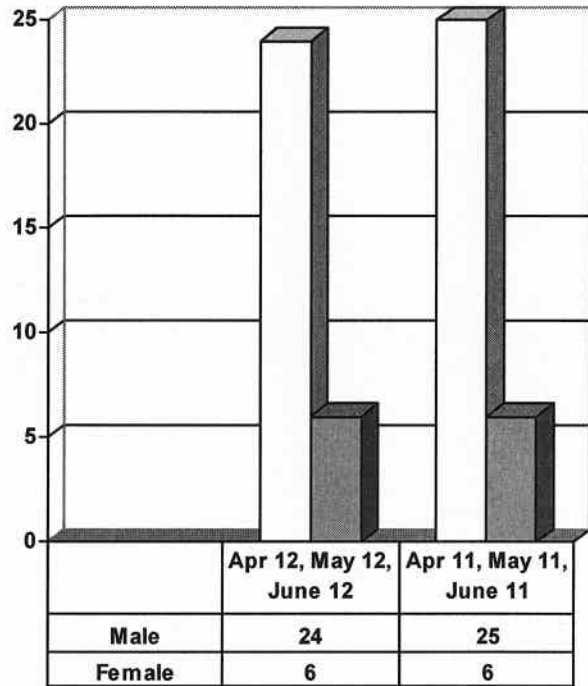


**JUVENILE SUPERVISION INFORMATION
MONTHS OF APRIL 2012, MAY 2012 AND JUNE 2012
(Compared against prior year information)**

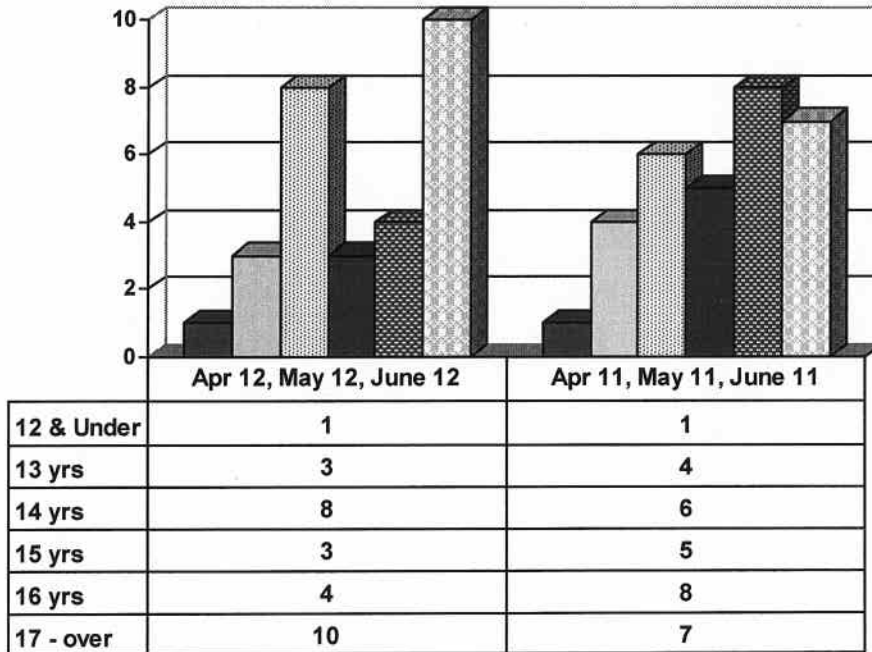
Juvenile Delinquency Petitions Filed



Demographics for Juvenile Admissions

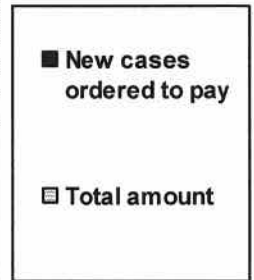
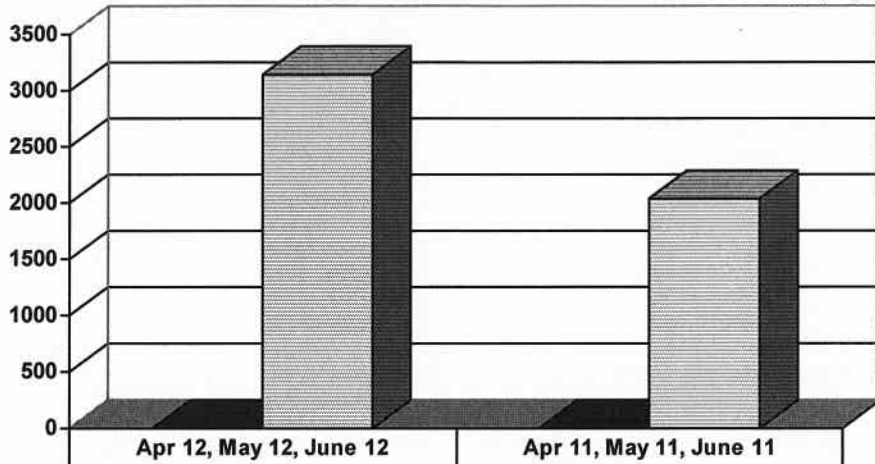


Age Demographics for Juvenile Admissions



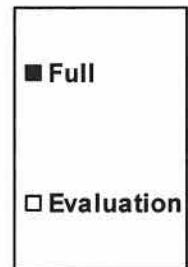
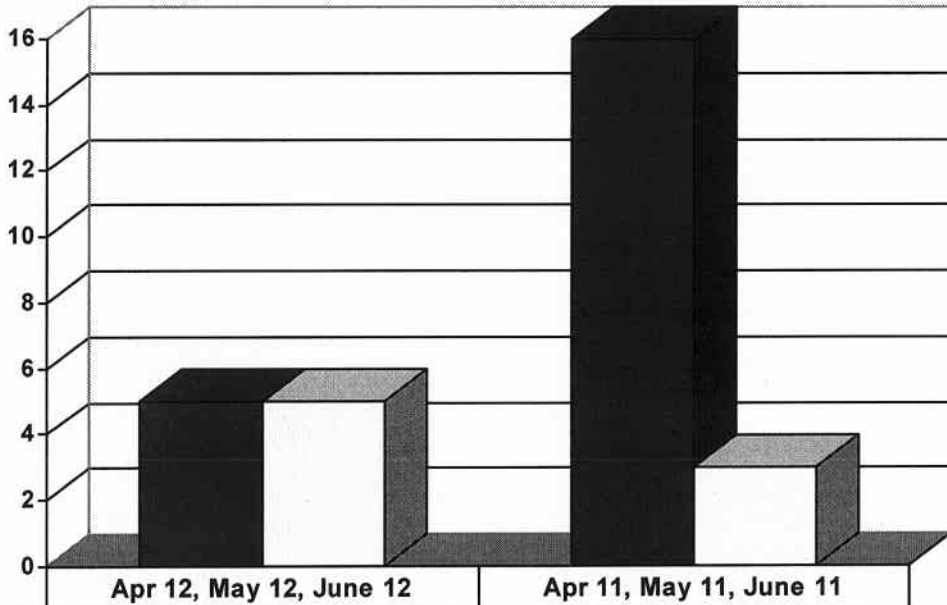
12 & Under
 13 yrs
 14 yrs
 15 yrs
 16 yrs
 17 - over

Restitution Ordered in New Juvenile Cases



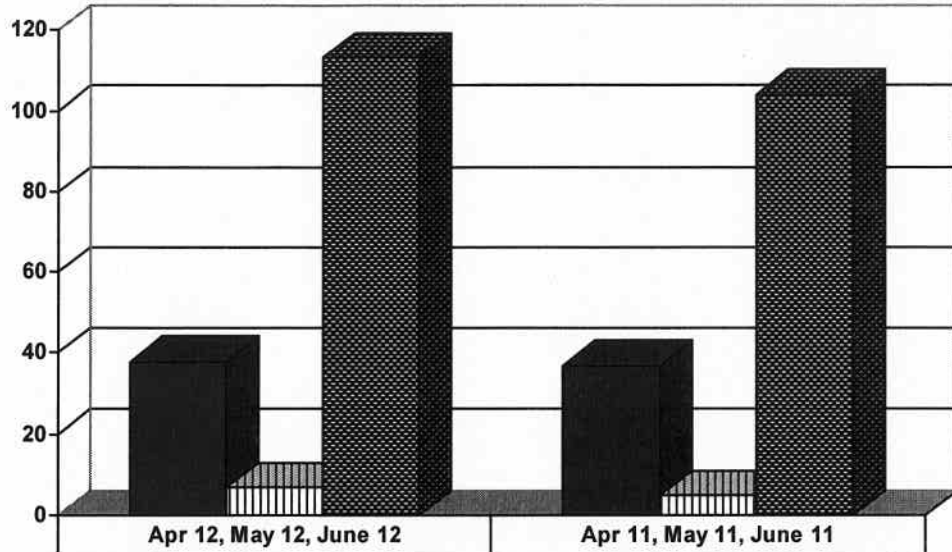
New cases ordered to pay	4	3
Total amount	\$3,137	\$2,040

Commitments to IDOJJ (Illinois Dept. of Juvenile Justice)



Full	5	16
Evaluation	5	3

Investigations Completed by Juvenile Unit



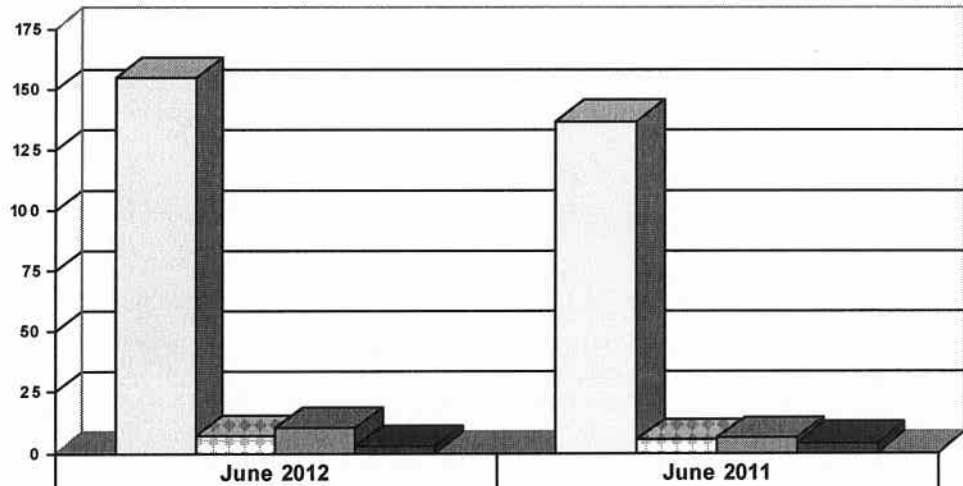
Social Histories	38	37
Supplemental Social History	7	5
Remission/Review	113	104

■ Social Histories

▨ Supplemental Social History

▩ Remission/Review

Juvenile Caseload at end of June 2012 compared to June 2011

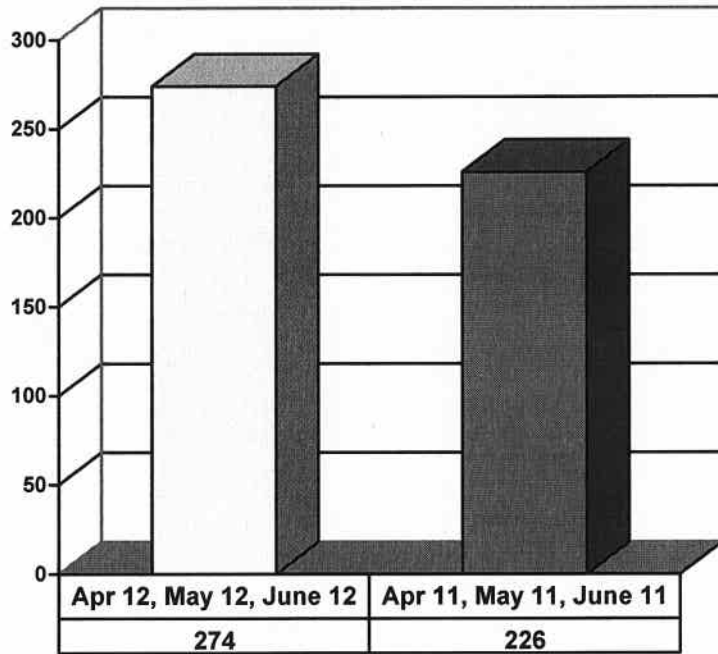


Probation	155	137
Continued under Supervision	7	5
Informal	10	6
Other	3	4

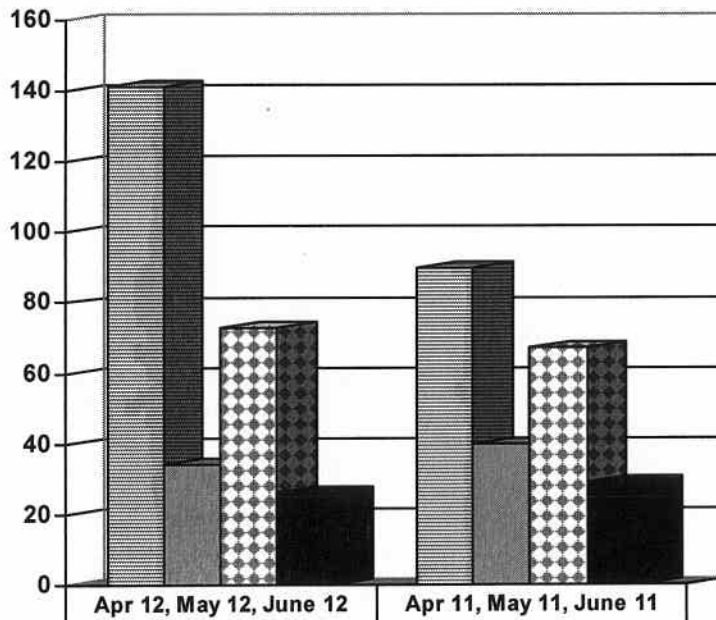
□ Probation ▨ Continued under Supervision ▩ Informal ■ Other

**ADULT SUPERVISION INFORMATION
MONTHS OF APRIL 2012, MAY 2012 AND JUNE 2012
(Compared against prior year information)**

Adult Intakes Completed

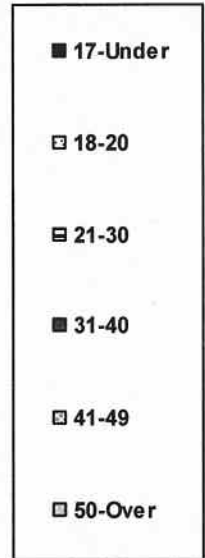
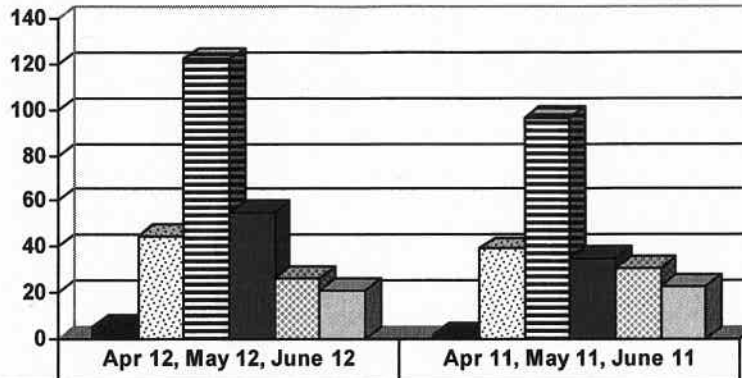


Demographics for Adult Intakes



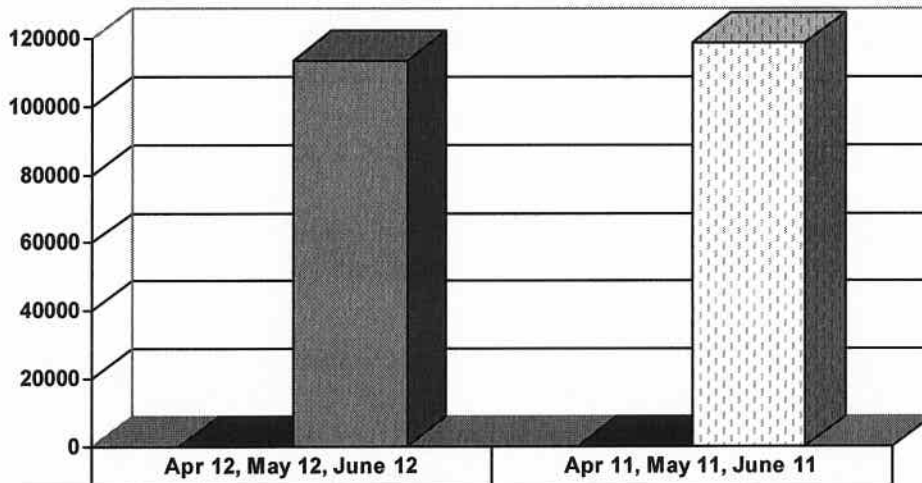
Male Felony	141	90
Female Felony	34	40
Male Other	73	67
Female Other	26	29

Age Demographics for Adult Intakes



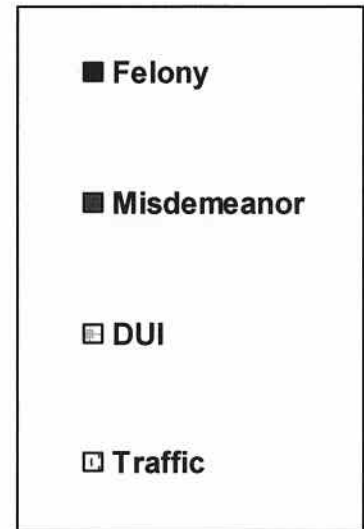
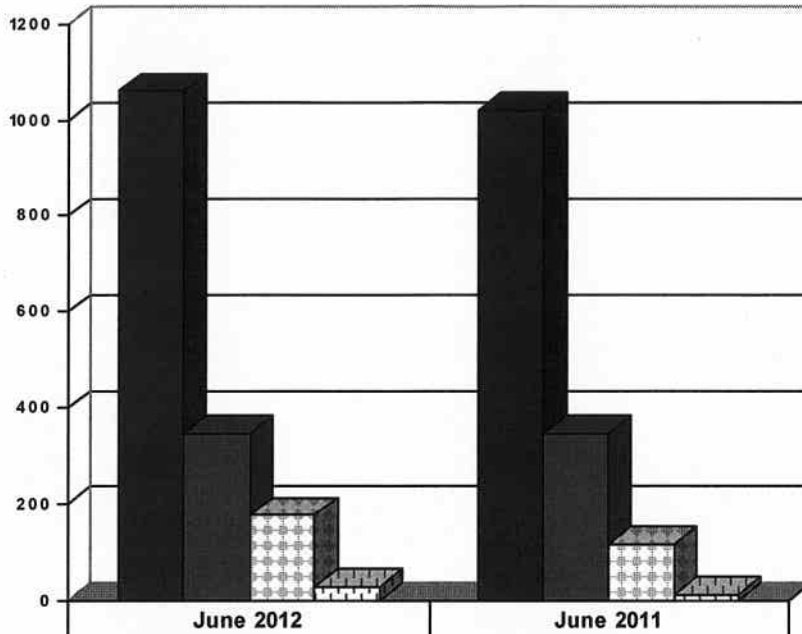
	Apr 12, May 12, June 12	Apr 11, May 11, June 11
17-Under	5	2
18-20	45	39
21-30	122	96
31-40	55	35
41-49	26	31
50-Over	21	23

Restitution Ordered in New Adult Cases



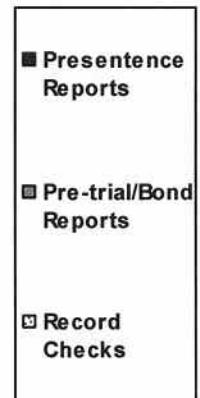
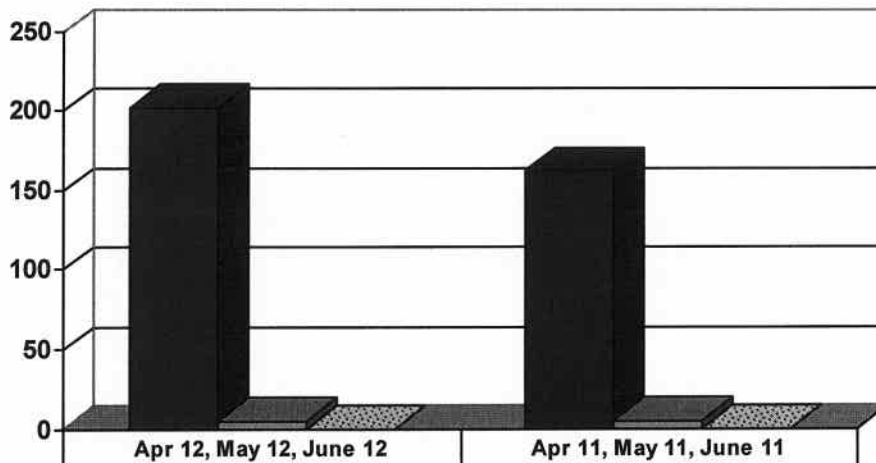
	Apr 12, May 12, June 12	Apr 11, May 11, June 11
New cases ordered to pay	39	23
Total amount	\$113,690	\$118,990

Breakdown of Adult Caseload at end of Reporting Periods



	June 2012	June 2011
Felony	1060	1021
Misdemeanor	347	346
DUI	177	116
Traffic	28	12

Adult Investigations Completed



	Apr 12, May 12, June 12	Apr 11, May 11, June 11
Presentence Reports	202	162
Pre-trial/Bond Reports	5	5
Record Checks	0	0

**Commitments to DOC
(Illinois Dept. of Corrections)**

