



**CHAMPAIGN COUNTY
DEVELOPMENTAL
DISABILITIES BOARD**
**CHAMPAIGN COUNTY
MENTAL HEALTH BOARD**

**Champaign County Mental Health Board (CCMHB) and Champaign County
Developmental Disabilities Board (CCDDB) Joint Study Session Agenda**

Wednesday, October 26, 2022 at 5:45PM

Held remotely, at <https://us02web.zoom.us/j/81393675682> 312-626-6799, Meeting ID: 813 9367 5682
with representation in the Shields-Carter Room, Brookens Admin Bldg, 1776 E. Washington, Urbana, IL

Pursuant to the Governor's Executive Order establishing a pandemic disaster in the State of Illinois that covers the County of Champaign, and the CCMHB President's determination that holding this meeting in person is not prudent at this time due to health concerns with COVID-19 cases and hospitalizations reported in the county, this meeting will be held remotely via zoom. Public comment also will be taken remotely. The public may watch the meeting live through this link or view it later in archived recordings at <https://www.co.champaign.il.us/mhbddb/MeetingInfo.php>

Public Input: *All are welcome to attend the Board's meetings to observe and offer thoughts during "Citizen Input/Public Participation. For support, let us know how we might help by emailing stephanie@ccmhb.org. You may also communicate with the Board by emailing stephanie@ccmhb.org any written comments you would like read into the record.*

1. Call to Order
2. Roll Call
3. Zoom Instructions (**page 2**)
4. Approval of Agenda*
5. Citizen Input/Public Participation
The CCMHB reserves the authority to limit individual public participation to 5 minutes and limit total time to 20 minutes.
6. Presidents' Comments – Dr. Youakim and Dr. Robin
7. STUDY SESSION:
Journey to a Comprehensive Shelter System (pages 3-62)
The packet includes overviews from providers of services/supports to those who lack stable housing. A panel discussion will feature representatives of these organizations and the United Way of Champaign County, with comments and questions from members of the CCMHB and CCDDB.
8. Board Announcements
9. Adjournment

**Board action requested*

#3

Instructions for participating in Zoom Conference Bridge for CCDDB and CCMHB Joint Study Session October 26, 2022 at 5:45 p.m.

You will need a computer with a microphone and speakers to join the Zoom Conference Bridge; if you want your face broadcast you will need a webcam.

Go to Join Zoom Meeting

<https://us02web.zoom.us/j/81393675682>

Meeting ID: 813 9367 5682

One tap mobile

+13126266799,,81393675682# US (Chicago)

+13017158592,,81393675682# US (Washington D.C)

Dial by your location

+1 312 626 6799 US (Chicago)

+1 301 715 8592 US (Washington D.C)

+1 646 558 8656 US (New York)

+1 669 900 9128 US (San Jose)

+1 253 215 8782 US (Tacoma)

+1 346 248 7799 US (Houston)

Meeting ID: 813 9367 5682

Find your local number: <https://us02web.zoom.us/j/81393675682>

When the meeting opens, choose to join with or without video. (Joining without video doesn't impact your participation in the meeting, it just turns off YOUR video camera so your face is not seen. Joining without video will also use less bandwidth and will make the meeting experience smoother).

Join with computer audio.

Once you are in the meeting, click on "participants" at the bottom of the screen.

Once you've clicked on participants you should see a list of participants with an option to "Raise Hand" at the bottom of the participants screen. **If you wish to speak, click "raise hand" and the Chair will call on you to speak.**

If you are not a member of the CCMHB or a staff person, **please sign in by writing your name and any agency affiliation in the Chat area.** This, like the recording of the meeting itself, is a public document. There are agenda items for Public Participation and for Agency Input, and we will monitor the 'raised hands' during those times.

If you have called in, please speak up during these portions of the meeting if you would like to make a contribution. If you have called in and therefore do not have access to the chat, there will be an opportunity for you to share your 'sign-in' information. If your name is not displayed in the participant list, we might ask that you change it, especially if many people join the call.

Members of the public should not write questions or comments in the Chat area, unless otherwise prompted by the Board, who may choose to record questions and answers there.

67#

A Journey to a Shelter System

Service Providers Slides

Joint Study Session CCMHB/CCDDB & United Way

October 26, 2022 at 5:45pm



Care, Services, & Initiatives for People who are Homeless

Julianna S. Sellett, DNP, MBA, RN

Vice President, Carle Community Health

October 14th, 2022



Specific Housing Initiatives in Champaign County

- **Healthy Beginnings home visiting demonstration**
 - Partnership with the HACC/Youthbuild Program
 - Low-income pregnant women & their families
 - In-home care & supportive services
 - Medical/social/early childhood education
- **Healthy Homes research**
 - Partnership with UIUC (Indoor Climate R & T/Engineering)
 - Home assessment & renovations for low-income people with asthma and/or reactive airway disease
- **Tiny homes neighborhood (early planning phase)**
 - Partnership with CCHCC & UIUC (Admin/Engineering)
 - Hard to house homeless population & medically fragile



Carle Community Health team

Works closely with our community to build a culture of health, ensuring people, regardless of life circumstances, have an opportunity to be prosperous & live the healthiest life they can.



General Services (predominantly funded through daily operations & philanthropy)

- Care for all people, regardless of their ability to pay
 - Hospitals
 - Clinics
 - Mobile Health Services
 - Telehealth
 - In-“home” (where people reside) services
 - New models of care
 - CRIS Healthy Aging
- Social service assessments, referrals, & initiatives
- Carle Financial Assistance Program
- Prescription assistance
- Community teams with food, clothing, shoes, diapers, & other essentials on-hand
- Community outreach/education to support other sectors & entities (the community IS the largest health system)
 - Faith communities, schools, rural locations, & really any entity needing additional supportive information



Similar to the rest of the community, challenges with staffing & funding

Questions?



Faith
Community
Health

CHAMPAIGN COUNTY CONTINUUM OF SERVICES PROVIDERS TO THE HOMELESS (CSPH)

- The CSPH is the Continuum of Care covering Champaign County (IL-503)
- The U.S. Department of Housing and Urban Development (HUD) established the Continuum of Care program to help communities plan and coordinate the local response to homelessness. This is the role of the CSPH in Champaign County.
- The CSPH is composed of homeless service providers, victim service providers, faith-based organizations, local governments, housing advocates, public housing agencies, and many others. Over 40 local agencies are currently members of the CSPH.

- The CSPH receives funding from HUD through the Continuum of Care program. The CSPH also receives funding from the Illinois Department of Human Services (IDHS) through the Emergency Solutions Grant, and the Homelessness Prevention Grant.
- The CSPH distributes this funding to agencies through a series of local program competitions that are held annually.
- Types of programs and services that can be supported by this funding include rapid rehousing, street outreach, permanent supportive housing, emergency shelter, and homelessness prevention.
- Key challenges:
 - *Coordination among agencies*
 - *Lack of permanent housing options*
 - *No year round, low-barrier emergency shelter*
 - *Lack of lived-experience representation*

Champaign County Health Care Consumers

CCHCC provides the following services to residents of Champaign County, including homeless individuals:

- Help applying for and obtaining public benefits including: health insurance, SNAP, LIHEAP, free phones, Social Security Disability (SSDI and SSI), etc.
- Help navigating the health care system and gaining access to needed services, as well as financial assistance. We can help clients find affordable dental and vision services, as well as primary and specialty care.
- Help affording prescription drugs through our Rx Fund, which covers the costs of medications when people are unable to pay.
- Housing referrals to RPC and HACC (CCHCC is a member of the CSPH).
- Case Management services.

Capacity for these specific services, combined: 200 – 500 clients/mo.

Champaign County Health Care Consumers

Key services related to shelter and housing:

- Referrals to RPC, HACC, and Townships (member CSPH)
- Working with Carle and UIUC and other partners to develop a Tiny Homes Village for “hard to house” homeless individuals and medically-fragile individuals (estimated number of homes is 30).

Key funding streams for services NOT including Tiny Homes Village, include: CCMHB, Cunningham Township, Carle, OSF, and grassroots fundraising activities.

Key funding streams for Tiny Homes Village is TBD.

Challenges: Funding for all aspects of Tiny Homes Village.

Successes: Have built significant support (buy-in) for Tiny Homes Village and continue to add partners to the project.

FY 22/23 Homeless and Housing Funding



Service Funded	Service Provider	Amount
Low-Barrier, Year-Round Emergency Homeless Shelter	City of Champaign Township	\$3,900,000
Housing Gaps	To Be Determined	\$2,200,000
Emergency Rent Assistance	City of Champaign Township	\$ 250,000
Housing Rehabilitation	City of Champaign	\$ 709,518
Total		\$4,859,518



City of Urbana

Staff contact:

Sheila Dodd

grants@urbanaillinois.us

- City of Urbana Transitional Housing Program
- Households with income at or below 50% Median Family Income (MFI) for the Champaign County MSA
- 3 units with 3 bedrooms each (single-family homes)
- The City partners with service providers such as Housing Authority of Champaign County and RPC to provide services for clients
- This program is funded through the City's Community Development Block Grant from HUD
- Successes: Units are fully occupied (1 unit is being rehabilitated)
- Challenges: Staff capacity to administer program



Community Service Center of
Northern Champaign County
520 E. Wabash Ave., Rantoul, IL
PH: 217-893-1530

Program Name: The Resource Connection

- Emergency Food Pantry
Serving all of Champaign
County
- All Other Assistance Serving
Northern Champaign County

Services for the Homeless

- **Emergency Food Pantry** (open 10AM – 4 PM, M-F): **Open to all residents of Champaign County, 1x per month. Items from our hallway outside the pantry available daily.**
- **Transient/Homeless 1 Night Hotel Stay or Transportation**: **Must have either a court ordered eviction notice, be truly transient, or have other extenuating circumstances, and/or referred by Rantoul Police Department.**
- **Clothing Center Referrals**: **Open to residents of Champaign County. Need an ID and proof of county residency, if possible. The Clothing Center is open 3 days a week for limited hours and after hours by appointment.**

Funding for Homeless/Transient Services: Greater Rantoul Ministerial Association

Other funding sources for The Resource Connection: CCMHB, United Way, local government, private corporations and donors.

The Need for A Shelter System

C-U AT HOME

MELISSA COURTWRIGHT
TAMMY LEMKE



A History of Gaps

- There has always been a history of gaps when serving individuals experiencing homelessness
- C-U at Home plans for 365/overnight emergency shelter-Implements Oct. 2019
- May 2021 C-U at Home pauses low-barrier services due to staffing and client safety issues leaving a huge gap within the community. Continues to operate high-barrier housing and adopted hoteling for set of clients
- August 2021 C-U at Home re-opens the emergency overnight shelters
Operates as a sober shelter leaving a low barrier gap



Addressing Gaps



- November 2021-January 2022; Current C-U at Home provides new leadership and strategic plan
- Phase Strategy for Shelter Clients (Limited Beds for Low-Barrier)
- Bringing in High-Level Case Management Team
- Open 24/7
- December 2021 – April 2022
 - Launch of LBEWS
 - Security and High-Level Case Management Provided
 - C-U -Over 200 Unique Individuals served in the men's and women's LBEWS
 - Low Barrier Cost: \$167.00/night/person
 - 70 E. operates at capacity (48 men, 14 women) with overflow space in February
 - Launch of Advisory Committee
 - Continued discussion with community partners regarding Phase Sheltering System

Addressing Gaps

CITY OF CHAMPAIGN

April 2022

City of Champaign Township enters into an inter-governmental agreement with the City of Champaign to open a Low Barrier Shelter.

Shelter is proposed to launch 11/1/2022

C-U AT HOME

July 2022

Launched fully-staffed case management team
Launched Mid-Barrier operational and capital strategy

- Operations include intensive case management
- No longer a sober shelter
- Capital Needs include a non-congregate, communal living environment
- Determine Key Focus will remain **CLIENT FIRST**



This Photo by
Unknown Author is
licensed under [CC BY-SA-NC](#)

Status Update

CURRENT EMERGENCY SHELTER SYSTEM

C-U at Home Operates

- Day-Time Drop-In Center M-F
- Warming and Cooling Center as needed
- Year-Round Overnight Emergency Shelter
 - 48 Bed Men's Shelter
 - 12 Bed Austin's Place (Women) Shelter
- Advanced Shelter Homes – 4 homes (15-person capacity)

PROPOSED EMERGENCY SHELTER SYSTEM

City of Champaign Township

- Day-Time Drop-In Center
 - Low Barrier, year-round 24/7 emergency shelter – 50 men and 10 women
- ### C-U at Home
- Four Mid-Barrier Emergency Shelter Homes (15-person capacity)
 - Austin's Place Mid-Barrier Shelter for Women



This Photo by Unknown Author is licensed under CC BY-ND

Why a Shelter System?

- Reduce gaps in Services
 - Low, Mid and High Barrier Gaps remain
- Implement Best Practices
 - *Individuals experiencing homelessness are not a monolithic group*
 - *Individuals need stability and intensive case management to move forward*
 - *Individual needs a trauma informed environment and staff*
- Provide a system that is connected, coordinated, and easy to access



Shelter System of Care

Model: A service delivery approach, that builds partnerships to create a broad, integrated process for meeting the needs of individuals experiencing homelessness

Purpose: Creating a shelter system that leaves no person experiencing homelessness without appropriate shelter

*Individuals experiencing homelessness
are not a monolithic group.*

Service Components Definitions

Low-Barrier: Part of a system of care in which individuals experiencing homelessness are provided with shelter and services regardless of their sobriety status, criminal background, income, program participation or identification.

Mid-Barrier: Part of a system of care in which individuals experiencing homelessness are provided with intensive case management, basic needs are met to support stability. Clients must complete an intake process and agree to participate in a Shelter Program. Clients must consistently demonstrate they are working toward their goals. Each intake, case plan and goals are evaluated and developed on a case-by-case basis, structured to meet, and address the needs of the environment and the clients.

High-Barrier: Part of a system of care in which individuals experiencing homelessness are provided with case management, basic needs are met to support stability. Clients must complete an intake and agree to participate in the Shelter Program. Clients who enter at this phase have already demonstrated that they have some resources and capabilities to meet their goals. Each intake, case plan and goals are evaluated and developed on a case-by-case basis, structured to meet, and address the needs of the environment and the clients.

Current Service Components: A Visual

	Low-Barrier Shelter	Mid-Barrier Level 1 & 2	Mid-Barrier Level 3	High-Barrier Shelter
Drop in Emergency Shelter				
Space TBD	Space: Congregate	Space: Communal	Space: Non-congregate	Space: Apartments/Homes
Capacity TBD	50 men/10 women	Capacity TBD	Capacity In Development	Capacity In Development
Limited Case Management	Intense Case Management	Intense Case Management	Intense Case Management	Moderate Case Management
Not yet Developed	City of Champaign Township	Pending C-U at Home	Pending C-U at Home	C-U at Home
		Cunningham Children's Home	Cunningham Township	Family Shelter/UWCC/RPC
		Courage Connection	Restoration Urban Ministries	Restoration Urban Ministries

Service Needs

HOMELESS SERVICE TRENDS

- Prioritization of a system of care which addresses the nuance and complexity of homelessness
- Increase of individuals experiencing homelessness
- Continued increase in system uses trauma informed approaches in physical space design
- Development of mature and skilled case management teams to develop client-centered case plans

FORECASTED GAPS

- More Bed Capacity
- More Innovative Service Models
- Mid-Barrier, non-congregate, communal bed capacity
- Trained and skills staff to meet high, level, intensive case management needs

Journey to a Comprehensive System

Let's review Handout!

Phase 1: Open 24/7 Safe Shelter Program	Phase 2: Develop Mid-Barrier Program (11, 2022)	Phase 3: Develop Mid-Barrier (13)/High Barrier Program
<p>Normalize policies & procedures and hiring for staff</p> <p>City of Champaign Township Operates 10 beds and 10 women</p> <p>201 Washington, Champaign</p>	<p>City of Champaign funded Capital</p> <p>City of Champaign funding 2 year operating</p> <p>City of Champaign 201 Washington to LUCI</p>	<p>Knowledge completed to current needs in the community</p> <p>Goal Level 3: Serve 24 men and 16 women</p> <p>Goal High barrier: 100</p>
<p>Resources/Actions Secured/Needed</p> <p>Capital needed to secure shelter</p> <p>Time to secure facilities and operationalize</p> <p>Operational funding secured</p>	<p>Resources/Actions Secured/Needed</p> <p>Capital needed to secure shelter</p> <p>Time to secure facilities and operationalize</p> <p>Operational funding secured</p>	<p>Resources/Actions Secured/Needed</p> <p>Capital needed to secure shelter</p> <p>Time to secure facilities and operationalize</p> <p>Operational funding secured</p>
<p>Timeline</p> <p>Shelter operated by COCI by November 15, 2022</p> <p>Agreement 201 Washington by October 31, 2022</p> <p>COCI Home with 201 Washington to LUCI</p>	<p>Timeline</p> <p>Facilities/Program fully functioning by November, 2022</p> <p>Capital funds awarded 400K/1000K by March 2023</p>	<p>Timeline</p> <p>Facilities/Program fully functioning by November, 2022</p> <p>Capital funds awarded 400K/1000K by March 2023</p>
<p>COCI Home continues to operate shelter and transition</p> <p>201 Washington while shelter open Nov 15, 2022</p> <p>Self-representation of shelter to COCI by November 15, 2022</p>	<p>COCI Home continues to operate shelter and transition</p> <p>201 Washington while shelter open Nov 15, 2022</p> <p>Self-representation of shelter to COCI by November 15, 2022</p>	<p>COCI Home continues to operate shelter and transition</p> <p>201 Washington while shelter open Nov 15, 2022</p> <p>Self-representation of shelter to COCI by November 15, 2022</p>
<p>Potential Road Block/Steps</p> <p>Current program at 201 is at capacity 48 may/12 women</p> <p>Most of the residents are high functioning low</p> <p>How we meet need? Winter 2022: Aug 00</p> <p>What if capital/operational funding not available?</p>	<p>Potential Road Block/Steps</p> <p>Current program at 201 is at capacity 48 may/12 women</p> <p>Most of the residents are high functioning low</p> <p>How we meet need? Winter 2022: Aug 00</p> <p>What if capital/operational funding not available?</p>	<p>Potential Road Block/Steps</p> <p>Current program at 201 is at capacity 48 may/12 women</p> <p>Most of the residents are high functioning low</p> <p>How we meet need? Winter 2022: Aug 00</p> <p>What if capital/operational funding not available?</p>

What does C-U at Home need, in the short term, to bridge the gap in the mid-barrier Sheltering Space?

Capital Asset Development – Step 1

- Acquire property(ies) that allows for 25 men and 10 women to be served in a non-congregate, communal setting
- Acquire more mid-high barrier homes within the community.

Projected Cost Range: TBD

Guess: \$1,000,000 to \$2,000,000

Operational Funding/Development Gap

- Diversified Funding
- Individual/Mission Partner Fundraising
- Mental Health Board
- HOME Consortium Funds
- ARPA Funds
- United Way

Projected Cost Range: \$500,000-\$1,000,000

Current Services

Day Time Services

- Phoenix Day Time Drop-In Center
 - Monday-Friday: 12pm-5pm
 - Case Management
 - Food
 - Technology Resource Center
 - Games
 - Laundry
 - Showers
 - Shelter Intakes
- Outreach
 - Monday-Friday: 8am-5pm
- Transportation
 - Monday-Friday: 8am-5pm

Current Services

- Men's Emergency Shelter
 - 7 days/week, 8:30pm-8:00am
 - 48-person capacity
- Women's Emergency Shelter (Austin's Place)
 - 7 days/week, 8:30pm-8:00am
 - 12-person capacity

Overnight Services

- Shelter Program Services
- Case Management
- Food
- Technology Resource Center
- Games
- Laundry
- Showers
- C-U at Work

Service Needs

Successes

- Development of Cohesive/Shelter System Model
- Implemented Intensive Case Management Services

Challenges

- More Bed Capacity-Low and Mid
- More Innovative Service Models
- Mid-Barrier, non-congregate, communal bed capacity
- Trained and skilled staff to meet high, level, intensive case management needs

Funding Streams

Community Funded

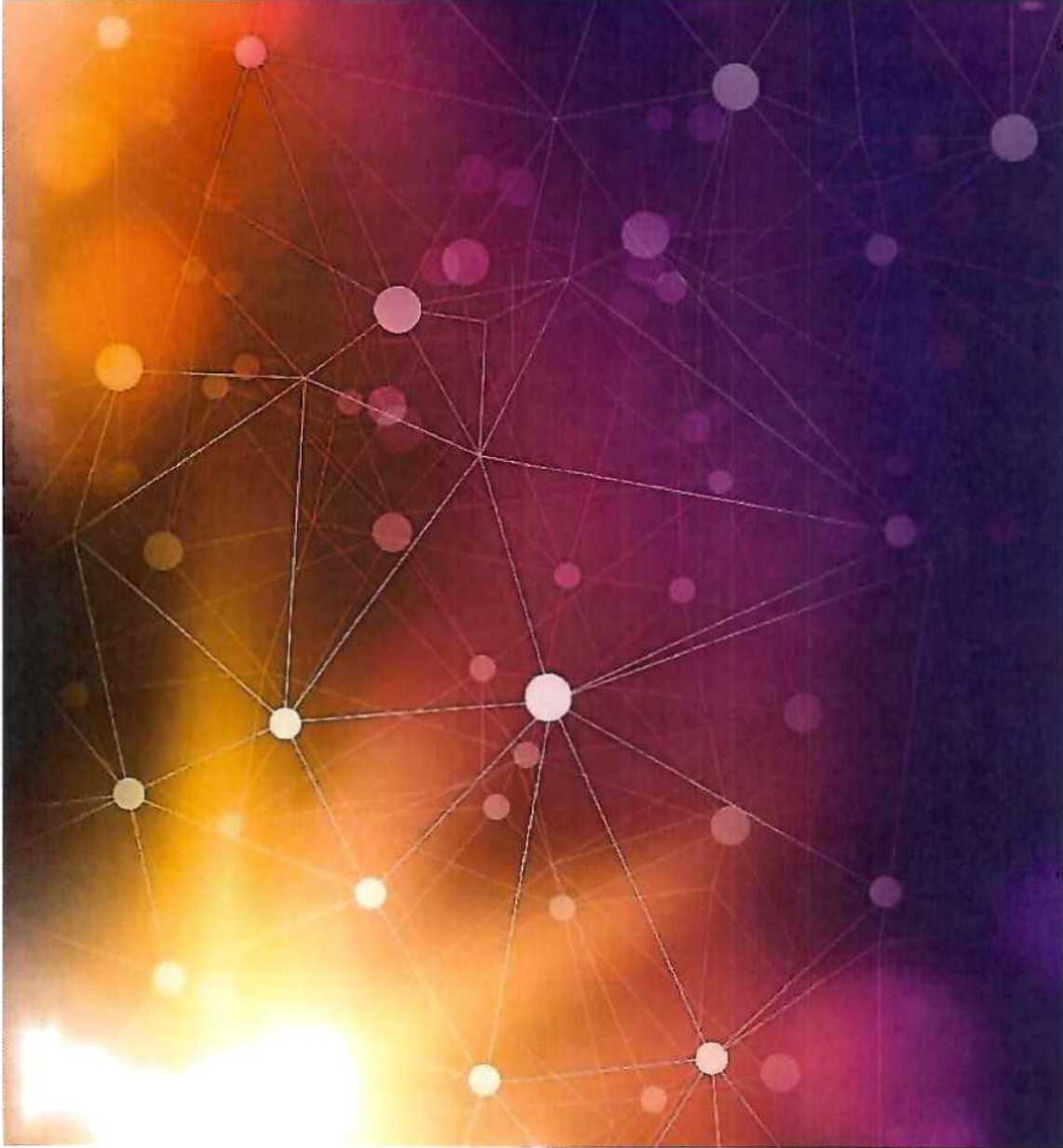
- OWN
- Hope Givers
- Regular Monthly Supporters

Grants

- Mental Health Board-Case Management
- United Way-Nights of Shelter
- RPC-Facilities

Cunningham Children's Home

ECHO & RHY Programs



Empowering Connections through Hope and Opportunity (ECHO)



- In 2018, Cunningham obtained a grant from the Champaign County Mental Health Board to provide homeless task-management services to individuals and families in Champaign community.
- We named the program ECHO (Empowering Connections through Hope and Opportunity).
- Though we don't provide shelter to these participants; we do provide extensive case management services to help them stabilize and find permanent housing.



CONTACT INFORMATION

Angie Bertauski-Pierce
Associate Director of Community Services
(217) 337-9060 Office
abertauski-pierce@cunninghamhome.org

Runaway Homeless Youth (RHY)

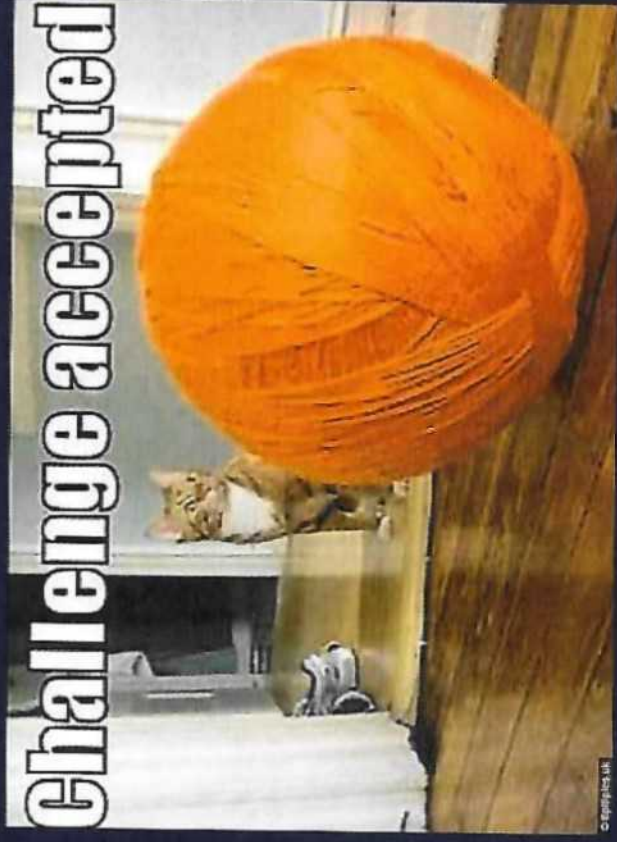
- In 2019, Cunningham extended our homeless services to include a grant-funded program through the Department of Human Services for the Runaway Homeless Youth program (RHY).
- This program serves clients aged 14 to 20.
- We have two emergency shelter beds at one of our TL homes, as well as a four-bedroom home, specifically for unsupervised young adults ages 18 to 24.
- We have 4 Transitional Living beds for RHY young adults 18-24 that can be housed up to two years
- We also have outreach services to those who are at risk or are homeless in Champaign County.
- Side note: If youth is under 18 years old, then CCBYS through Center for Youth and Family Solutions responds to the youth to determine placement in host home, etc.

CONTACT INFORMATION

Angie Bertauski-Pierce
Associate Director of Community Services
(217) 337-9060 Office
abertauski-pierce@cunninghamhome.org

*Not enough family shelter beds

- *We would be willing to provide oversight and case management towards available housing units in C-U for our RHY population





PROGRAM NAME: RYAN WHITE PART B PROGRAM / EAST CENTRAL ILLINOIS HIV CARE CONNECT

WHO WE SERVE: INDIVIDUALS LIVING HIV DISEASE

CAPACITY: WE SERVE 17 COUNTIES WITHIN EAST CENTRAL ILLINOIS

KEY SERVICES: RENT, UTILITIES, MORTGAGE LONG-TERM & SHORT-TERM

FUNDING: RYAN WHITE PART B & HOPWA GRANTS

CHALLENGES: LACK OF AVAILABLE HOUSING FOR CLIENT'S, LIMITED LANDLORDS THAT WILL PARTICIPATE IN THE PROGRAM

SUCCESSES: TENANT BASED RENTAL ASSISTANCE (TRBA) IS A HOPWA SERVICE AVAILABLE TO PROVIDE CLIENT'S WITH LONG-TERM HOUSING AND UTILITY ASSISTANCE.



PROGRAM NAME: ADULT SERVICES

WHO WE SERVE: EVERYONE IN CHAMPAIGN COUNTY

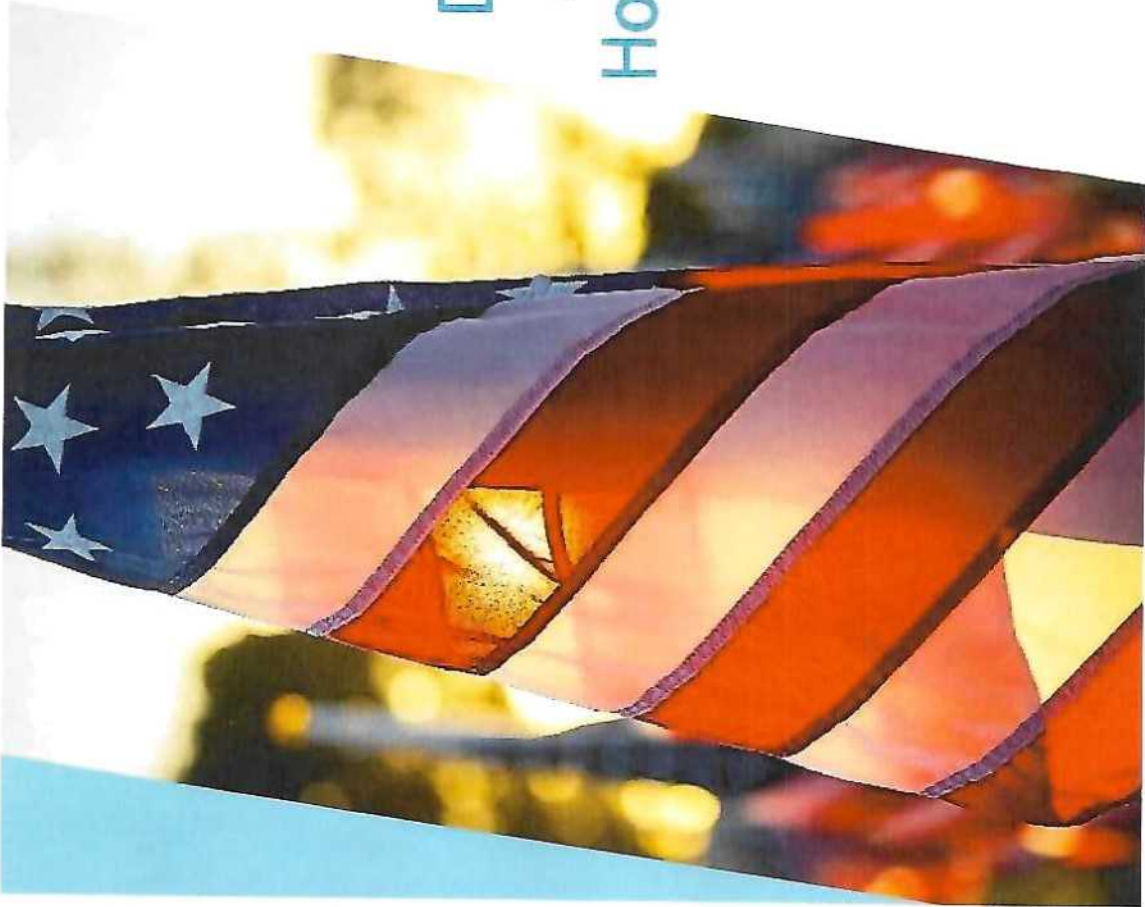
CAPACITY: AS NEEDED (GREATLY EXPAND DURING AN EMERGENCY)

KEY SERVICES: VACCINATION, GUIDANCE ON INFECTION CONTROL, AIR FILTER BOXES, TB RESPONSE, HARM REDUCTION SERVICES INCLUDING SYRINGE EXCHANGE AND NALOXONE TRAINING, STD TESTING AND TREATMENT, FAMILY PLANNING

FUNDING: LOCAL HEALTH PROTECTION GRANT, TAXES

CHALLENGES: LIMITED SERVICES

SUCCESSES: WE HAVE BEEN WORKING WITH SHELTER PROGRAMS FOR DECADES



Department of Veterans Affairs Health Care for Homeless Veterans Program

VA Illiana Health Care System
Danville, IL



Who we serve: Veteran as defined as “a person who served in the active military, naval, or air, or space services, excluding anyone who received a dishonorable discharge or was discharged by reason of a general court-martial (38 USC § 2002 (b)).

Capacity: We cover a large catchment area in East Central Illinois (over 30 counties) through a continuum of services. The permanent supportive housing program is a federal partnership between HUD and VA Supportive Housing known as HUD-VASH. Housing Authority of Champaign County and Illiana VA currently have the capacity to serve up to 32 Veteran households with the HUD-VASH program.

Key Services: Street outreach, case management services, peer support, substance use disorder recovery services, transitional housing, and permanent supportive housing case management services.

Funding streams: Federal government (HUD funds vouchers, VA funds services)

Challenges and successes /what do you see coming that may impact/influence your services:

Champaign utilization is steady and eligibility expanded, resulting in increase in demand for HUD-VASH limited women’s shelter, affordable, safe, and quality housing stock, landlord recruitment and retention, meeting the demand for new Veteran families with no prior history of homelessness now facing homelessness

Overview of HCHV Program and Services

Outreach: Includes street outreach, coordination with other outreach staff and shelters, support engagement, conducts screening and referrals to resources to help address critical time interventions (obtain required documentation, triage for health care needs)

Grant and Per Diem: Includes transitional housing models through community homeless service providers. VA GPD staff provide clinical and administrative oversight. *Salvation Army is the GPD provider in Champaign, offering Bridge Housing and Transition in Place models.*

HUD-VASH: Includes permanent supportive housing (voucher assistance through local PHA office) and on-going case management services to Veteran, with Housing First principles, trauma-informed care and advocacy, and harm reduction approaches.

Peer Support: Veteran with lived experience providing support, hope, and advocacy throughout the navigating of community and VA resources and supporting motivation in the engagement with services.

Substance Use Disorder Specialist: Provides individual and group services to program participants

Veteran Justice Program: Serves as a liaison to the justice system (jails, prisons, probation, parole), supporting access to treatment and recovery services in effort to reduce recidivism

National Call Center Hotline for Homeless Veterans: 24/7 hotline service for homeless Veterans, family members and local service providers to call to initiate services to homeless Veterans in location. VA team members respond and engage with Veteran to offer service coordination.



National Call Center
for Homeless Veterans
877-424-3838
va.gov/homeless

GROW

- ▣ GROW serves people struggling with their mental health.
- ▣ GROW provides a recovery model. You can come to a GROW for prevention or rehabilitation.
- ▣ GROW's capacity is 75 to 105 persons served with newly forming groups we could serve up to 45 more persons.
- ▣ GROW offers group support in the homeless shelter and overall community for the homeless.
- ▣ Champaign County Mental Health Board, and private donations.

GROW

- ▣ Challenges- not having a space in the shelter that supports confidentiality.
- ▣ Transient population
- ▣ Successes- We do have an average attendance of 5 to 10 weekly. With some consistently attending and a few that have attended since inception of the group in June 2022.



Growing & Moving Forward Together

Housing Authority of Champaign County

Lily Walton, Executive Director | Lilyw@hacc.net

Stephanie Burnett, Director of MTW | Stephanieb@hacc.net

**The Housing Authority of
Champaign County**

*"Growing & Moving
Forward Together"*

Mission *To provide a quality
living environment as a
foundation for individuals to
achieve their full potential.*

Vision *Develop quality affordable
housing communities providing
opportunities and support that
will maximize individual potential
and enable successful transition
to self-sufficiency.*



About HACC....

The Housing Authority of Champaign County (HACC) is a municipal corporation organized according to the Illinois Housing Authority Act. The jurisdiction of HACC includes all incorporated and unincorporated areas of the county of Champaign, Illinois.

In 2010, HACC became one of only 39 public housing authorities in the country to be designated as a Moving to Work (MTW) Agency.

Today, HACC has extensive development and management experience and has developed over \$100 million of new affordable housing through mixed financing methods. Additionally, HACC has administered over 1,200 tenant-based vouchers, a homeownership program, and a rental assistance program for homeless veterans. HACC also administers a multitude of resident support and service programs under various HUD and non-HUD grants.



ENDING HOMELESSNESS INITIATIVES

C-19 Preference

- Vouchers made available for individuals/families living in congregate shelters

Emergency Housing Vouchers

- Vouchers made available for individuals/families who are currently experiencing homelessness, at-risk of homelessness, and individuals/families fleeing or attempting to flee domestic violence, dating violence, stalking and sexual assault. Unlike our regular vouchers, EHV's also come with supportive services.
- HACC also received funding from Champaign County to expand supportive services to non-EHV voucher holders.
- Majority of funds are used to pay security deposits, application fees and household essentials such as beds, furniture, pots and pans, etc.

Partnership with the Emergency Family Shelter

- Eligible families can be referred to receive a Housing Choice Voucher once they leave the family shelter.

Sponsor Based Voucher Programs

- Activities include student vouchers, the Healthy Beginnings program, reentry, and YouthBuild.
- HACC will also be requesting proposals from family-service providers that can make referrals on behalf of families with minor children that are experiencing homelessness.

Providing safe transportation in Champaign-Urbana



thrive



- MTD comes into regular contact with many individuals from the homeless community, both on vehicles and at major stop locations such as Illinois Terminal and Lincoln Square.
- MTD may be able to provide transportation to a facility in a van, complete with Operator.
- MTD also has the ability to identify locations of individuals to who may be outside of the usual areas of the community.

CONTACTS:

Amy Snyder

Chief of Staff

asnyder@mtd.org

Randy Fouts

Assistant Operations Director

rfouts@mtd.org



217.384.8188



Restoration Urban Ministries

- We Serve displaced singles, families, and ex-offenders
- We have 55 available rooms that can house up to 135 people
- Our key Services are our Self-Sufficiency Classes including Job Preparation and Training
- We are funded by donations from the general community
- Economic Turmoil may impact our services in the future





FOLLOW US!



Restoration Urban Ministries
1213 Parkland Court
Champaign, IL. 61821

Email: restorationurbanministries@gmail.com
Facebook: @Restoration Urban Ministries (Live Services)
Instagram: @RestorationUrbanMinistries
Twitter: @RestorationUM





Family Support & Strengthening

- Serves all immigrants and Limited English Proficient individuals, regardless of immigration status.
- In FY22, we served over 2,800 unduplicated individuals. No one is ever turned away for services.
- TRC assists clients with accessing emergency housing and locating affordable rental housing.
- Funding streams include CCMHB, IL Department of Human Services, Illinois Coalition for Immigrant and Refugee Rights, US Conference of Catholic Bishops, Jewish Federation of Metropolitan Chicago, United Way, local faith based organizations and private foundations.
- Successes include the arrival of over 70 Afghan evacuees and their successful resettlement in permanent housing.
- Challenges include recent arrivals of undocumented families without relatives or friends to stay with, even temporarily, the limited capacity of area shelters and emergency housing, and limited availability of affordable rental housing.

Champaign County Homelessness Study Session



Lisa Benson, Community Services Director
Champaign County Regional Planning Commission

System Wide Supports for Homeless Service Continuum



Centralized Intake for Homeless

- Coordinated Entry System (CES) coordination and management
- Funding: Housing Urban Development (HUD) & Community Services Block Grant (CSBG)

Continuum of Service Providers to the Homeless (CSPH) Coordination

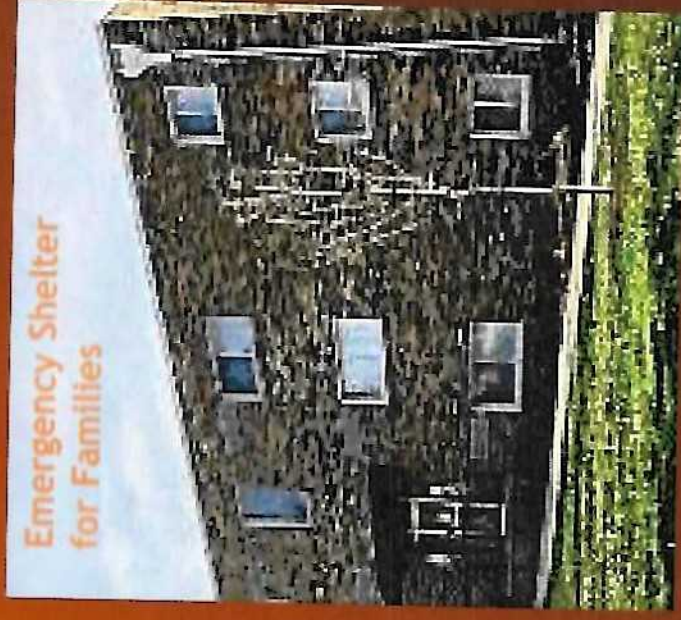
- Full-time CSPH Coordinator position
- Funding: Housing Urban Development (HUD) & Champaign County Mental Health Board (CCMHB)

Homeless Management Information System (HMIS)

- System Administration and data management
- Funding: Housing Urban Development (HUD) & Emergency Solutions Grant (ESG)

Shelter and Housing Services for Homeless Households

- **Emergency Shelter for Families with Children**
Capacity: 8 families/ 46 individuals
Funding: United Way, Emergency Solutions Grant (ESG)
- **Permanent Supportive Housing-Individuals**
Capacity: 40 one-bedroom vouchers/ 40 individuals
Funding: Housing Urban Development (HUD)
- **Permanent Supportive Housing-Families**
Capacity: 12 one, two, and three-bedroom vouchers/ 12 families
Funding: Housing Urban Development (HUD)
- **Beds for Homeless Households Program**



Success, Gaps in Services, and Challenges

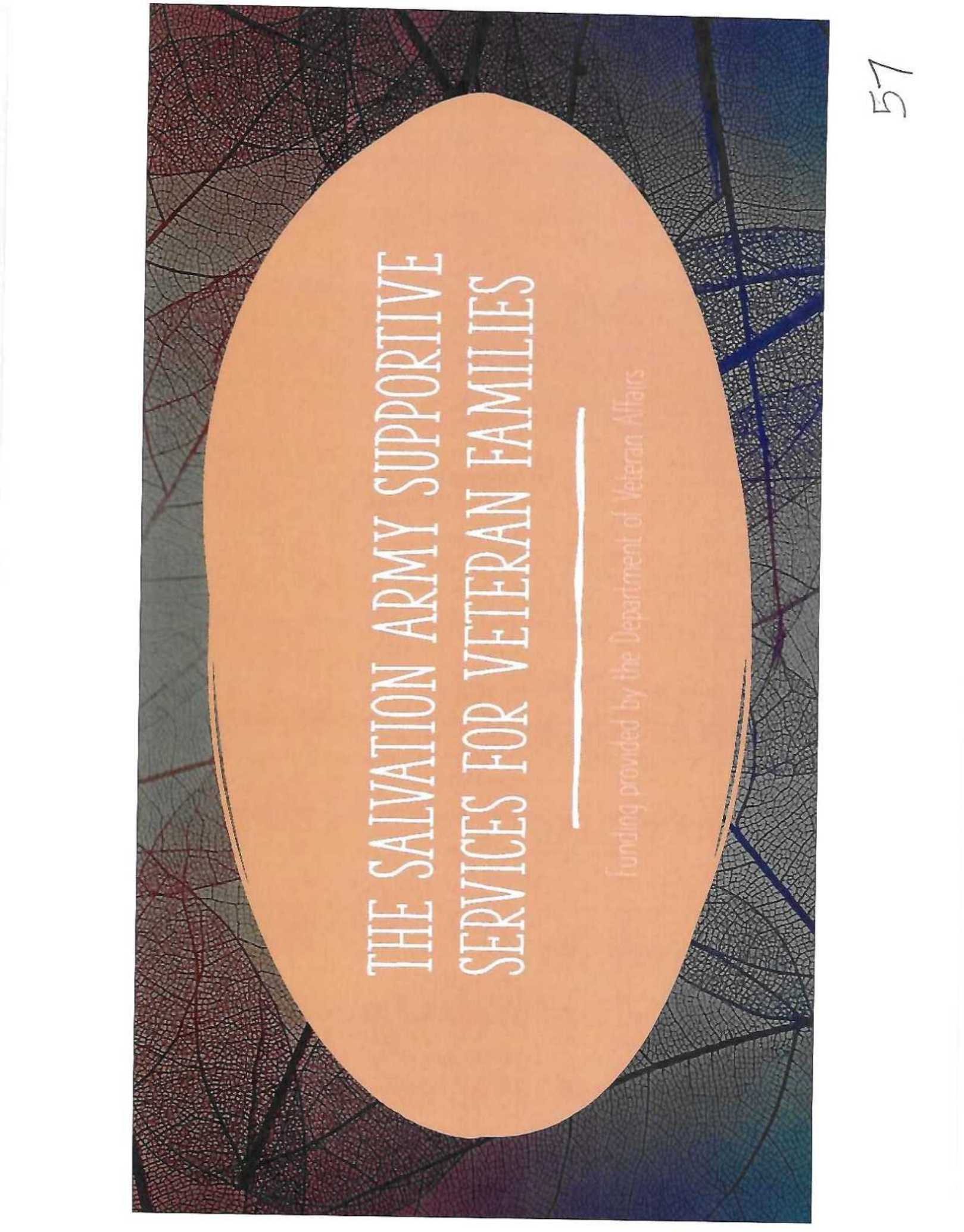
Successes

The Emergency Shelter for Families (ESF) offers a robust service array supporting homeless families moving from literal homelessness to permanent housing. 221 families (225 adults and 469 children) have been served since the program inception. Nearly 80% of households have exited to permanent housing.

The RPC has established trusty, cooperative, and meaningful partnerships with a number of local landlords.

Gaps in Services/ Challenges:

- Limited capacity for case management and supportive services for specialty needs (mental illness, substance use, chronic health, developmental disabilities, etc.).
- Need for more permanent supportive housing specifically for homeless households.
- Overcoming landlords' negative experiences due to lack of rent payments by tenants and unit damages.
- Motivation/ incentives for engagement in services such as financial literacy, counseling, etc. and successes and what do you see coming that may impact/influence your services; pre-shelter/ housing case management; need for permanent housing vouchers.



THE SALVATION ARMY SUPPORTIVE
SERVICES FOR VETERAN FAMILIES

Funding provided by the Department of Veteran Affairs

PROGRAM INFORMATION

- Who we serve: We currently service Veterans in a total of 100 counties (82 in Illinois, 11 in Kentucky and 7 in Illinois)
- Key Services: We provide Rapid Rehousing/Homeless Prevention Services to qualifying Veterans
- Funding Streams: We are fully funded by the Department of Veteran Affairs
- Challenges: Finding affordable housing for our Homeless Veterans especially those who are living on a fixed income. They would not need services of they could afford 3 times the amount of the rent.
- Successes: (1) Shallow Subsidy services have begun in all counties (2) Veteran Services at The Salvation Army also include GPD-Bridge and GPD-TIP services (3) CARF accredited

Terrapin Station Sober Living Men's Sober Living Home

Who we serve:

Men between the ages of 21-60 who suffer from substance use disorders who are also nonviolent offenders that are either on probation, parole or awaiting sentencing.

Capacity:

We have 3 client beds and 1 bed for the House Manager. There is only 1 bed per room to assure adequate and equal privacy, space, peace and quiet...etc.

Key Housing Related Services:

We Provide: shelter, food, beds, bedding, clothes, toiletries, kitchen appliances and kitchenware, heating, cooling, water, internet, transportation, help transitioning to traditional housing as well as case management.

Our Funding Streams:

Outside of our partnership with CCMHB we gain funds via client rental costs, online jewelry, gemstone and pin sales which are sold on across Etsy, eBay and Amazon in two separate stores. We also receive roughly 1 monetary donation every year.

Challenges:

A key challenge is motivating individuals in early recovery to seek social circles that will assist in maintaining personal accountability while also giving the newcomer much needed structure.

Motivating individuals to find jobs that serve no true value to the individual outside of the hourly wage.

We have also come into some issue with individuals who do not have a sincere desire to stay out of jail/prison, who will merely say what they believe is necessary for us to allow them to stay with us. In these instances, the person is not ready for normal life and prefers the simplicity and lack of accountability found in prison.

Successes:

We have had great success with individuals who still have custody of their children, have good work ethic, a close friend, a spouse, a career, strong religious beliefs, strong sense of community and or individuals who are facing very harsh sentencing as well as those who have reached their true bottom. Those who follow the 12 steps, either via AA or just in their personal daily lives, also show significantly higher chances of success.

What's to come:

With No Cash Bond coming into affect Jan. 1st, 2023, it is expected that less people who are awaiting sentencing will apply to enter our program, however with the courts and rehabilitation centers still suggesting sober living homes as the best next step in their recovery, it may very well have little to no impact at all.



WIN Recovery's Mission:

WIN Recovery provides a safe home for justice-involved women and LGBTQ 2S + individuals in recovery, and equips them with vital life skills to transform their lives and reintegrate themselves into their community as healthy, thriving members.

WIN Recovery Capacity

- 1st Step Home – Total 6, emergency 7
- Independent Home – Total 4
- Extended Stay Home – Total 4

- A total of 15 Individuals Housed at one time
- 2 Cycles Yearly
- Opportunity to house up to at least 30 individuals

Services we provide:

1. Safe Housing
2. Recovery and Wraparound services
3. Legal assistance
4. Family Unification
5. De-incarceration
6. Health Education
7. Mental Health Support
8. Trauma-informed training
9. Civic Engagement

FUNDING STREAMS:

- Private Foundations
- National Organization
- State of Illinois Funding
- Champaign County Funding
- Community Organizations
- State Agency Contracts

Challenges

- Continuing to convince funders that our population should remain the focus of funding for long-term
- Lack of Substance Use Disorder/Trauma Informed Housing for Women & LGBTQ2S+ Friendly Housing
- Difficulty meeting the needs of the population we serve, that are not participating in our Safe Home Program.
- Many processes for emergency assistance is a long drawn out and difficult process and makes it difficult to utilize the local Wrap Around Services

Future plans that will impact & influence WIN Recovery services

WIN Resiliency Resource Center

- A safe place where Justice involved women and LGBTQ2S+ individuals can receive the same services that we currently provide in our WIN Recovery safe home.
- The Resource Center is a place for Trauma Informed Care, acceptance of Gender identity and expression, Healing, & Holistic Environment.
- Goal is to provide continuum care of services with individuals that seek out our assistant.
- Provide Hassle Free assistance to individuals seeking out HELP for Human Basic Needs and emergency assistance
- Providing the local community with General Supplies normally not provided (ex. baby items, undergarment, laundry supplies), bus passes, Official Documentation, & etc.
- Build out Wrap Around Services through partnership with other agencies, services, and organizations in the community.
- Increasing the population of individuals that get serve in Champaign County and in WIN Recovery Safe Homes.

62