

CASES NO. 707-S-12 & 725-V-12

SUPPLEMENTAL MEMORANDUM

January 17, 2013

Champaign
County
Department of

PLANNING &
ZONING

Petitioners: Daniel Williams & Fran Williams

Request: CASE: 707-S-12

Authorize the use of an existing Paintball Facility as an "Outdoor Commercial Recreational Enterprise" as a Special Use on 5.2 acres that is part of a 35 acre tract in the CR Conservation-Recreation Zoning District.

CASE: 725-V-12

Authorize the following in the CR District:

- Part A. Variance for a rear yard of zero feet in lieu of the minimum required 25 feet;
- Part B. Variance for a side yard of zero feet in lieu of the minimum required 15 feet;
- Part C. Variance from a minimum separation from a front property line for parking spaces of zero feet in lieu of the minimum required 10 feet, on the following property:

Location: A 35 acre tract in the Southeast Quarter of the Northeast Quarter of Section 36 of Newcomb Township and commonly known as the home at 2453 CR 600E, Dewey.

Site Area: 5.2 acres

Time Schedule for Development: Currently in Operation

Prepared by: Andy Kass
Associate Planner

John Hall
Zoning Administrator

STATUS

These cases were continued from the December 13, 2012, public hearing. Additions to the Summary of Evidence, Finding of Fact, and Final Determination are proposed and included below.

PETITIONER UPDATE

On January 15, 2013, the petitioner submitted a progress update (Attachment A). The following information was included in the update:

1. Purple paint has been put on trees to indicate no hunting or trespassing.
2. Referees are wearing orange during state regulated hunting seasons.

3. One-third of the woven wire fence has been installed.
4. One-fifth of the bunkers have been rebuilt for the floodplain area.

The petitioner also provided a revised Firemark Paintball Orientation (Attachment B) with information regarding trespass and hunting occurring on neighboring properties. The petitioner also indicated on the site plan (Attachment C) that the mobile home is proposed to be 142 feet from the north property line.

PROPOSED EVIDENCE AND REVISIONS

Revise Item 5. and renumber as necessary the Summary of Evidence for both Cases 707-S-12 and 725-V-12 to read as follows:

5. Regarding site plan and operations of the Paintball Facility:

- A. The subject property is a 35 acre lot with approximately 5.2 acres being used for the proposed special use in Case 707-S-12 and is the subject of the variance in Case 725-V-12.
- B. The site plan received February 8, 2012, and revised on August 13, 2012, and amended on November 19, 2012 and January 15, 2013, indicates the following:
 - (1) Dimensions of the area of the proposed Special Use (approximately 5.2 acres) in related Case 707-S-12.
 - (2) Five playing fields for paintball games located in the northwest corner of the property. Four of the game fields are in the wooded area of the property and one game field is in the non-wooded area. There are various obstacles placed throughout the playing fields for patrons to hide behind while the game is in play. The obstacles include large wooded or plastic spools, plastic barrels, plastic tubes, and pallets.
 - (3) An 85' × 132' parking area located on the east side of the property and approximately 961 feet away from the game fields. The entrance to the parking area is located off of CR 600E and is directly north of the parking area. The parking area is the subject of Part C of the variance.
 - (4) A 200' × 30' overflow parking and loading berth area located on the east side of the subject property.
 - (5) Signage on the property directs customers to walk down a farm lane to get to the playing fields.
 - (6) Areas not associated with Firemark Paintball located south of the proposed special use in Case 707-S-12 on the same property.
 - (7) An area of open space located in between paintball fields 2, 3, 4, and 5.
 - (8) The location of a storage shed and a semi trailer which are used for storage.

- (9) Location of an existing mobile home.
- (10) Location of the staging area for the paintball park.
- (11) Location of a where an accessible parking space could be placed in the future if necessary.
- (12) Side and rear property lines.
- (13) A hay field located east of the paintball fields.
- (14) A 961 feet long accessway that is 20 feet wide.
- (15) The proposed location of the existing 14' × 60' mobile home in playing Field #2 is proposed to be 142 feet from the north property line.
- (16) An indication that a fence 4 feet in height will run along the side and rear property lines for the length of the playing fields.

Renumber Item 5.C. of the Summary of Evidence for Case 707-S-12 to Item 5.D. and add the following revisions:

€. D. On August 13, 2012, and January 15, 2013 (revised edition), the petitioner submitted a document titled "Firemark Paintball Orientation" which covers safety and rules of the game. The game rules and safety rules are presented to all patrons of Firemark Paintball and can be summarized as follows:

- (1) Goggles must be work at all times in goggle required areas.
- (2) Paintball gun barrel covers must be in place before leaving the playing field.
- (3) All personally owned guns must shoot below 300 fps and be semi-automatic.
- (4) Games last 10 minutes
- (5) If a paintball hits or breaks on a player the player is out.
- (6) Players must remain within the designated boundary lines
- (7) Climbing of tress, shooting blindly, and shooting wildlife is prohibited.
- (8) No smoking, alcohol, or foul language.
- (9) All referee decisions are final.
- (10) Trespass onto neighboring properties is strictly prohibited.

- (11) Target shooting and hunting during state regulated hunting seasons occurs on adjacent properties.

Revise Item 5.E. of the Summary of Evidence for Case 707-S-12 and add as Item 5.D. to the Summary of Evidence for Case 725-V-12 as follows:

- E. On August 8, 2012, Dan Williams, petitioner, indicated the following to Planning and Zoning Staff:
- (1) T-posts will be used to secure obstacles to the ground to prevent them from floating away in a flood event.
 - (2) A rope will be used to delineate the property boundaries. On January 15, 2013, the petitioner indicated in an update to staff that a woven wire fence is being installed to delineate the property boundaries.

ATTACHMENTS

- A Progress Update received January 15, 2013
- B Revised Firemark Paintball Orientation received January 15, 2013
- C Amended Site Plan received January 15, 2013
- D Email from Tim Woodard dated January 12, 2013

Update

1-12-13

To: Champaign County Planning and Zoning

The following is an update on the progress at Firemark Paintball:

1. Purple paint is on trees for no hunting or trespassing.
2. Refs are wearing orange during state hunting season.
3. T-posts are in the ground and 1/3 of the woven fence is up to delineate borderline to neighboring properties.
4. 1/5 of the bunkers have been rebuilt for the floodplain area.



Received 1-15-2013

Champaign County
Planning & Zoning Dept.
1776 E. Washington Street
Urbana, Illinois 61802

Received 1-15-2013
Champaign County
Planning & Zoning Dept.
1776 E. Washington Street
Urbana, Illinois 61802

● **FIREMARK PAINTBALL**
ORIENTATION
(Safety and Rules of the Game)

- **The Most Important Rule on this field is “NEVER” take your goggles off in any goggle required area.** (SHOW AREAS) Not for any reason, this includes: lost contact, fogged lens, paint covered lens, or game over. A paintball can blow out an ear or an eye and then no one will be having any fun out here. Is this rule clear to everyone?! If your goggles come off, come loose from the frame, strap comes loose or lens cracks on the field, place your hands over your eyes, drop to the ground, and call for paintcheck. Do not look up! Any ref assisting must hover over the player until he/she gets the goggles on and escorted off the field. **PENALTY.** Three strike rule: First attempt to take off mask you will be yelled at to put mask on. Second attempt you will sit out a game. Third attempt you will go home.
- **The Second Most Important Rule is “Always” having your barrel cover in place and your safety on before you leave the playing field.** (Show area where required and how to put barrel cover on.) Ref make sure you show taking the barrel strap off the back and to put the barrel cover around their neck so that they do not lose it. There is now a \$7 charge to replace the barrel cover.
- **NOTE: Trespassing onto neighboring properties is strictly prohibited! Make point about woven fence.**
- **NOTE2: There is target shooting on adjacent properties. Furthermore, hunting occurs on adjacent properties during State regulated hunting seasons.**

GUN MECHANICS

- All rental guns are mechanical semi-auto guns. The hoppers are gravity fed, therefore you could outshoot your gun, shooting blanks or chop paintballs. Do not slant your gun to much, this could chop paintballs. Make sure lids snap shut after refilling your hopper with paintballs. Once paintballs drop to the ground you can not put them back in the rental gun and do not pick up other paintballs off the ground either. All paintball guns should recock automatically if your gun does not please let a ref know after the game. If this happens during the game yell paintcheck for the ref to come assist you. Do not drive your barrel into the ground, you will clog it up and will not be able to shoot until that is cleaned out. Aim by looking where the paintballs go, not down the sight. When you run out of air, bring your paintball gun to the ref after a game to be refilled. All personally owned guns must shoot below 300 fps and be in semi-auto mode, electric guns must be in tournament lock. No 3-burst or any other mode is allowed.

GAME PLAY

- Each game is 10 mins. Teams will be asked to put their hands on the starting gate and then asked if they are ready. Then game will start when I yell “3,2,1,GO,GO,GO!!!” On first word ‘go’ players can run to their bunkers and start shooting their opponents. Game ends when one side eliminates the other side

or time runs out. The head ref will give the final call that the game has ended. When time runs out, if there are still live players, they will be asked to come to the center to be checked and counted as one point each.

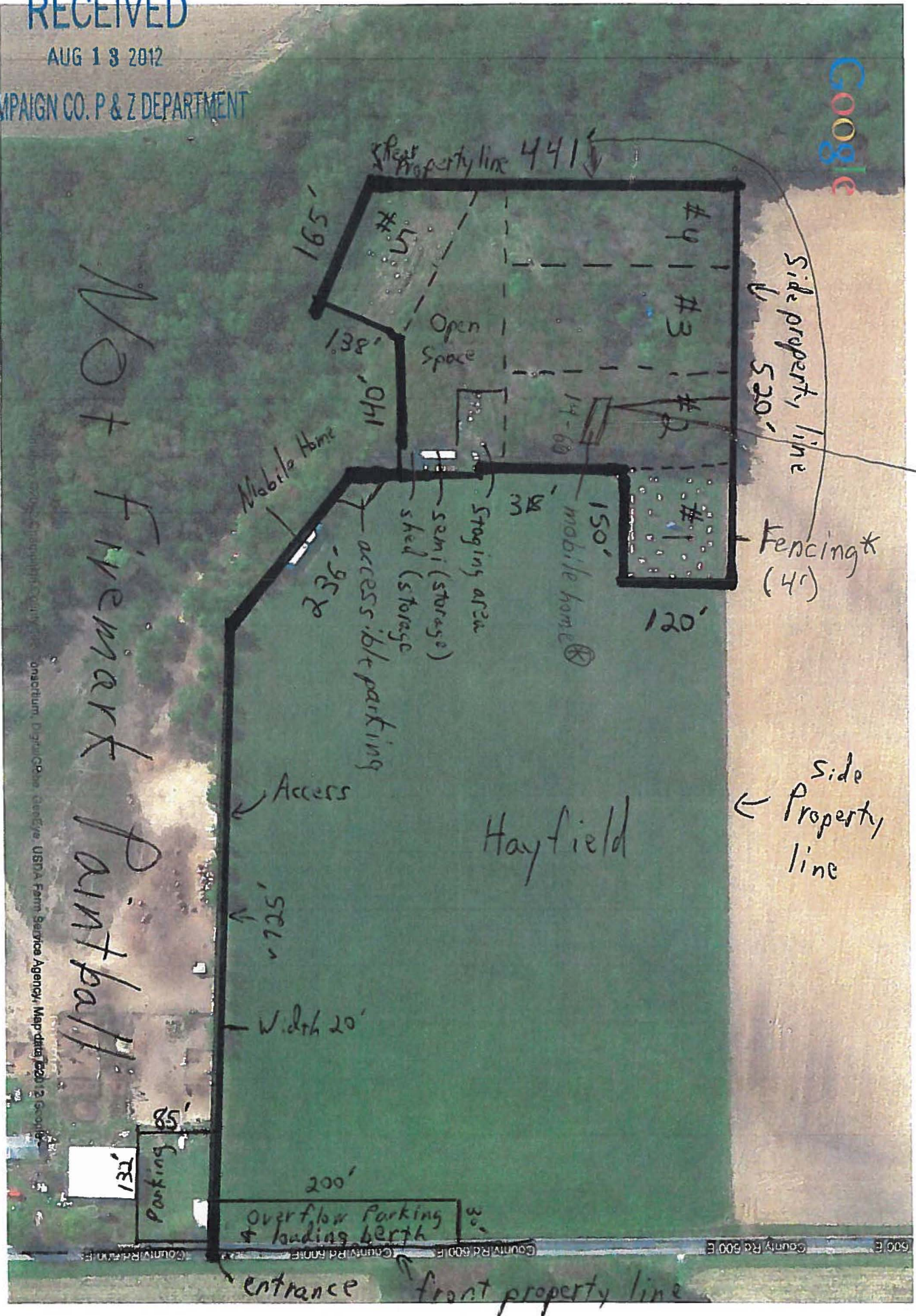
- This is a game of tag. If you are hit by a nickel size of paint anywhere on your body, mask, paintball gun, you are eliminated. If the paintball bounces off a tree or ground and breaks on you, you are eliminated. If a teammate shoots you or you shoot yourself you are out. If you feel you were shot, but you do not see the paint break then stay in your bunker and yell "PAINTCHECK" and a ref will check you.
- If and when you are caught wiping your paint off during a game this is cheating and you will be asked to go home.
- During the game, you must stay within the designated boundary lines or you will be considered eliminated. No blind firing. No shooting the signs, refs or eliminated players deliberately or wildlife. When caught you will be asked to leave the facility after one warning. Do not try to climb in trees, on bunkers, or move bunkers.
- Once you and/or a ref has determined that you are eliminated, signal to others by saying "I am out" or "I'm hit" and do the following: put one hand on top of your head and the other hand with gun in the air and run off the field. (Warning: once you have called yourself out you are out regardless if the paintball broke on you or not) Eliminated players are to move to the sidelines, put your safety and barrel cover on and wait until game is over. Eliminated players cannot hand off guns or paintballs to live players. Eliminated players are not allowed to talk to live players by giving hints. Cheering for your team is acceptable. **PENALTY:** First time within a game will be a verbal warning. Second time a ref will pull the players nearest teammate. **ALL REFS DECISIONS ARE FINAL!!!**
- After each game, if you got hit on your mask, or gun, we will clean those off for you. If you got shot in the body we will hand you a rag to clean off your own body. If you do not clean off your paintball shot well enough we may call you out on the next game. Customers with their own equipment are welcome to use our rags and spray bottles to clean off.
- No smoking, alcohol, or foul language of any kind. You will be given verbal warnings. No deliberate physical contact with anyone!!!
- Show toilet and trash can and burn pile.
- Safe zone rule or bunkering!!!

Received 1-15-2013
Champaign County
Planning & Zoning Dept.
1776 E. Washington Street
Urbana, Illinois 61802

RECEIVED

AUG 13 2012

CHAMPAIGN CO. P & Z DEPARTMENT



142' from side property for trailer 1-15-12

Andrew Kass

From: Timothy Woodard [tdwood84@yahoo.com]
Sent: Saturday, January 12, 2013 11:53 AM
To: John Hall
Cc: Andrew Kass; Jamie Hitt
Subject: Re: Firemark Case

John,

I read in the most recent ZBA agenda that there was "no update from petitioner" in the Firemark case. Not sure what the ZBA's expectations are here in terms of response, but it strikes me that the lack of response is probably due to a desire to avoid stipulations/rules being put on the operation. I can tell you with firsthand certainty that Firemark was open during the Illinois shotgun deer seasons and that none of the requirements that were discussed at the ZBA meetings (I.e. Having referees at the exterior of the property with orange vests on to make sure participants stayed on the Firemark property, etc.) were implemented.

It seems to me that the petitioner may have simply decided to thumb his nose at ZBA...

Thanks,
Tim Woodard