

Champaign County Board Environment & Land Use Committee February 4, 2021

Champaign County Solid Waste Management Information Series Part 2

Champaign County Department of Planning & Zoning

1

Information Series: Champaign County Solid Waste Management

- 1
 - IL mandate to counties regarding solid waste planning
 - IL waste management hierarchy
 - CC Solid Waste Management Plan and updates
 - IL Commodity/Waste Generation & Characterization Study Update
- 2
 - **Infrastructure: Landfills, transfer stations, etc.**
 - **CC Regional Pollution Control Facility Siting Procedures ordinance**
 - **Estimating waste generation and landfill diversion**
 - **CC waste hauler license fee**
- 3
 - Available recycling options
C&D debris, metals, aluminum, cardboard, paper, glass, plastics, batteries
- 4
 - Banned from IL landfills
Lead acid batteries, mercury-switch thermostats, tires, yard waste, white goods, e-waste
- 5
 - Hard-to-manage materials
Food scraps, HHW, paint, pharmaceuticals, sharps, carpet, mattresses, single-use plastics, glass bottles/jars

2

Landfill History in C-U **

- The original 'town dump' was located at the intersection of University and Cunningham — along the Boneyard Creek. There were numerous privately owned small 'dumps' in C-U area.
- In 1920's the town dump moved further east off University Avenue. The 'new' city dump area was operated by a private company from mid 20's to 1944, then operated by Urbana from 1944-1976. Operations were contracted out from 1976-1988.
- Four individual but contiguous, permitted landfills together comprise the Urbana landfill complex approximately 41 acres in size. Landfill activities occurred at the complex for over 65 years — until 1988.
- In 1950, Urbana and the U of I entered into the first of several agreements.
- The City of Champaign's landfill was approaching capacity and in 1975 the cities entered into agreement creating the Champaign-Urbana Solid Waste Disposal System (CUSWDS). CUSWDS oversaw operation of 3 landfills, and had broad powers related to management of wastes generated within their limits. Upon the closure of the last landfill in 1988, the primary function of CUSWDS shifted to post closure care. CUSWDS shares the costs associated with post closure.

Challenges: "Landfills are liabilities forever!"

*** Excerpts from 'Resolving Chronic Problems with Landfills,' Presentation by Rod Fletcher, Environmental Manager, City of Urbana.

3

Illinois
Waste Management
Hierarchy

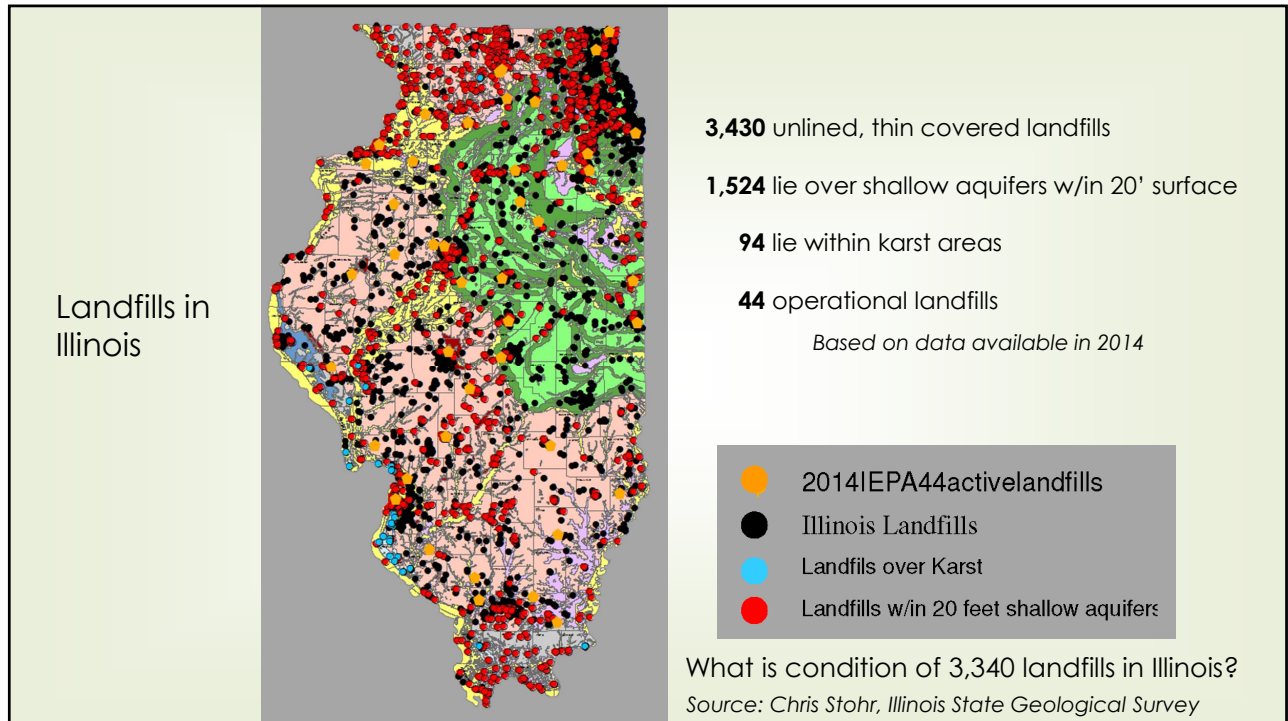
Volume Reduction
Recycling & Reuse
Combustion
Energy Recovery
Combustion

Landfill

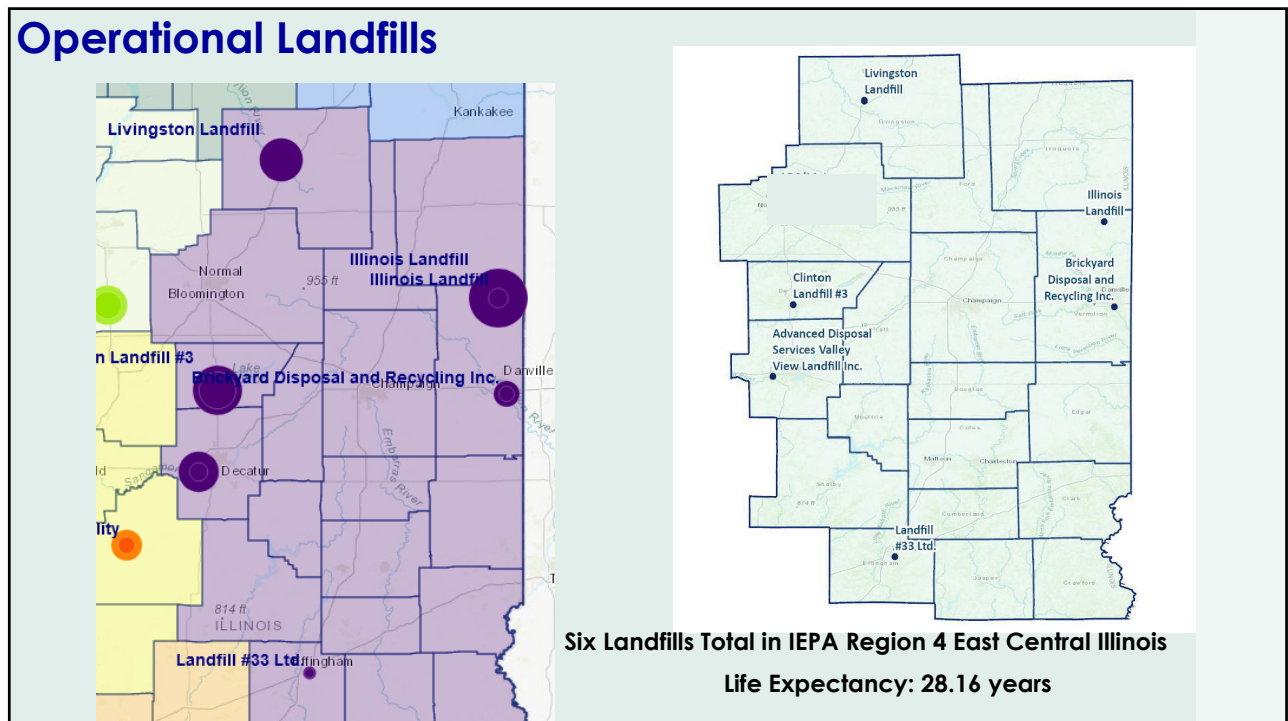
Sustainable Materials Management Hierarchy

Prevent, Rethink, Redesign
Reduce, Conserve, Minimize
Reuse, Repair, Maintain
Remanufacture
Recycle
Material Conversion
Thermal Processing w/Energy Recovery
Residuals Management
Regulated Disposal <ul style="list-style-type: none"> • Traditional landfilling, incineration w/o energy recovery
Unregulated Disposal <ul style="list-style-type: none"> • Unacceptable: Unregulated or unsafe disposal, including littering or open dumping, open burning, use of unlined or unprotected landfills

4



5



6

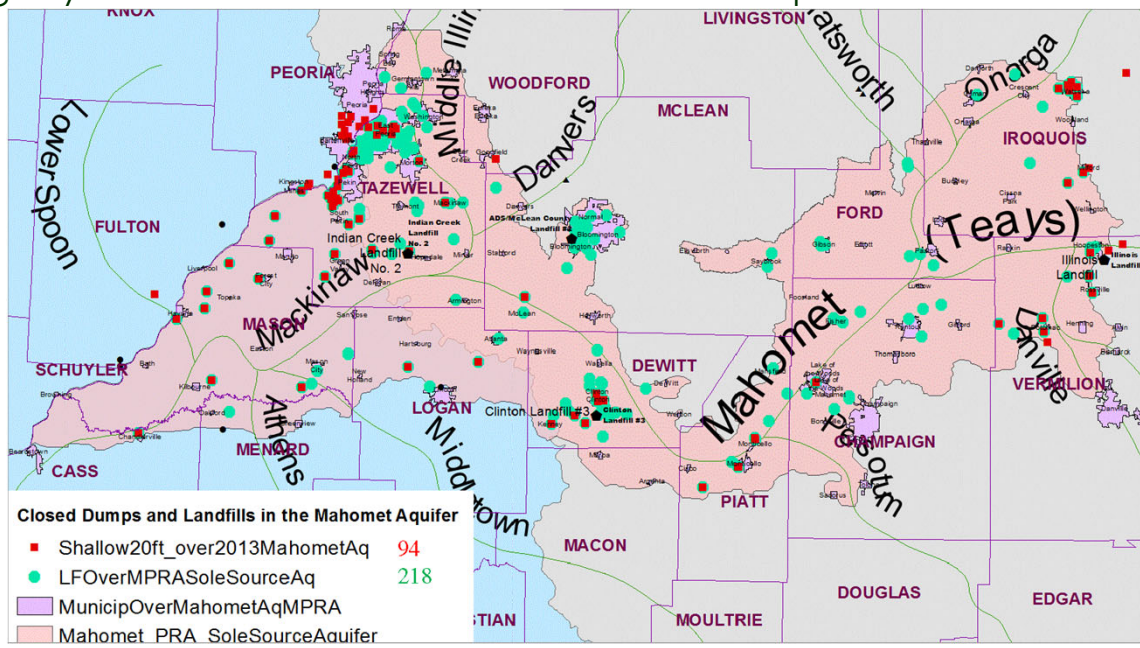
Mahomet Aquifer System

- One of Illinois' most important groundwater resources, serving as the primary source of drinking water for more than 500,000 people in 15 Illinois counties and providing an estimated 220 million gallons of water per day to communities, agriculture, industry, and rural wells.



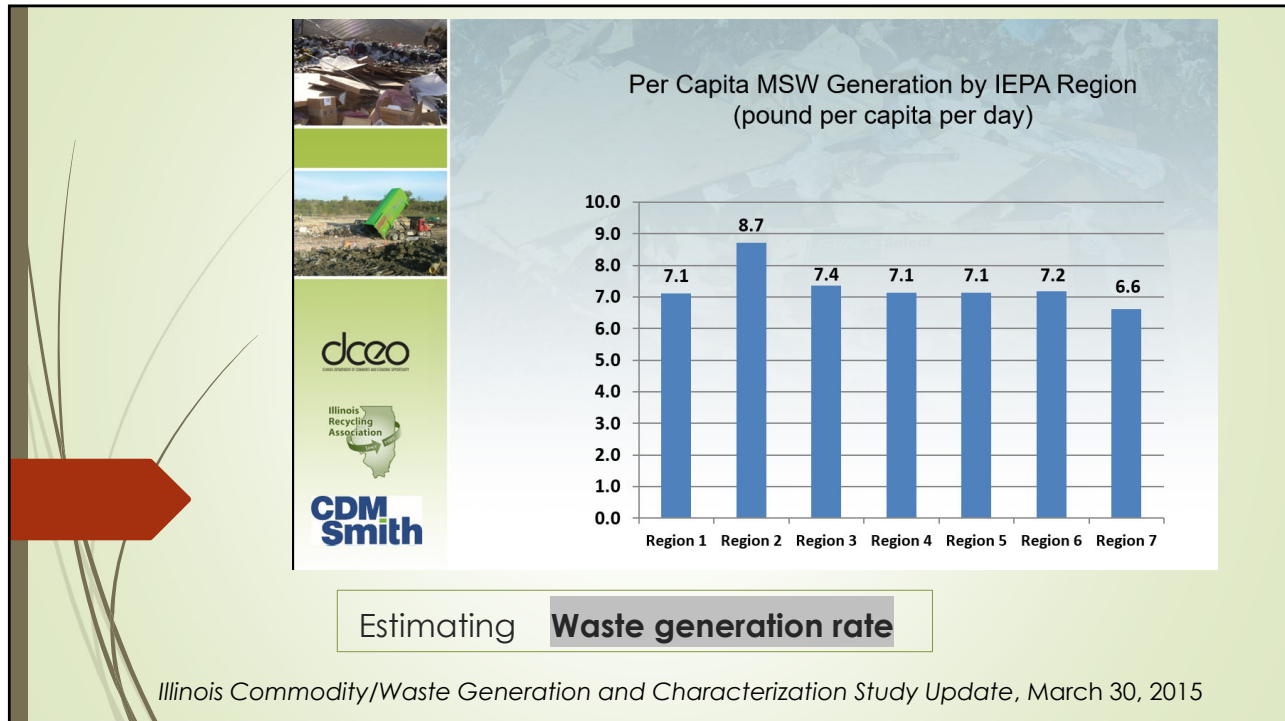
7

Legacy Landfills situated over the Mahomet Aquifer



Source: Chris Stohr, Illinois State Geological Survey

8



9

Tracking vs. Estimating

- *** Municipal solid waste disposal rates
- ** Landfill diversion rates
- * Recycling rates

Original target set by Solid Waste Planning and Recycling Act (SWPRA)
County Recycling Program designed to **recycle 25%** of its solid municipal waste.

10

Contact

Susan Monte, Planner and County Recycling Coordinator
Champaign County Department of Planning & Zoning

Email: smonte@co.champaign.il.us

Direct Office: (217) 819-4127