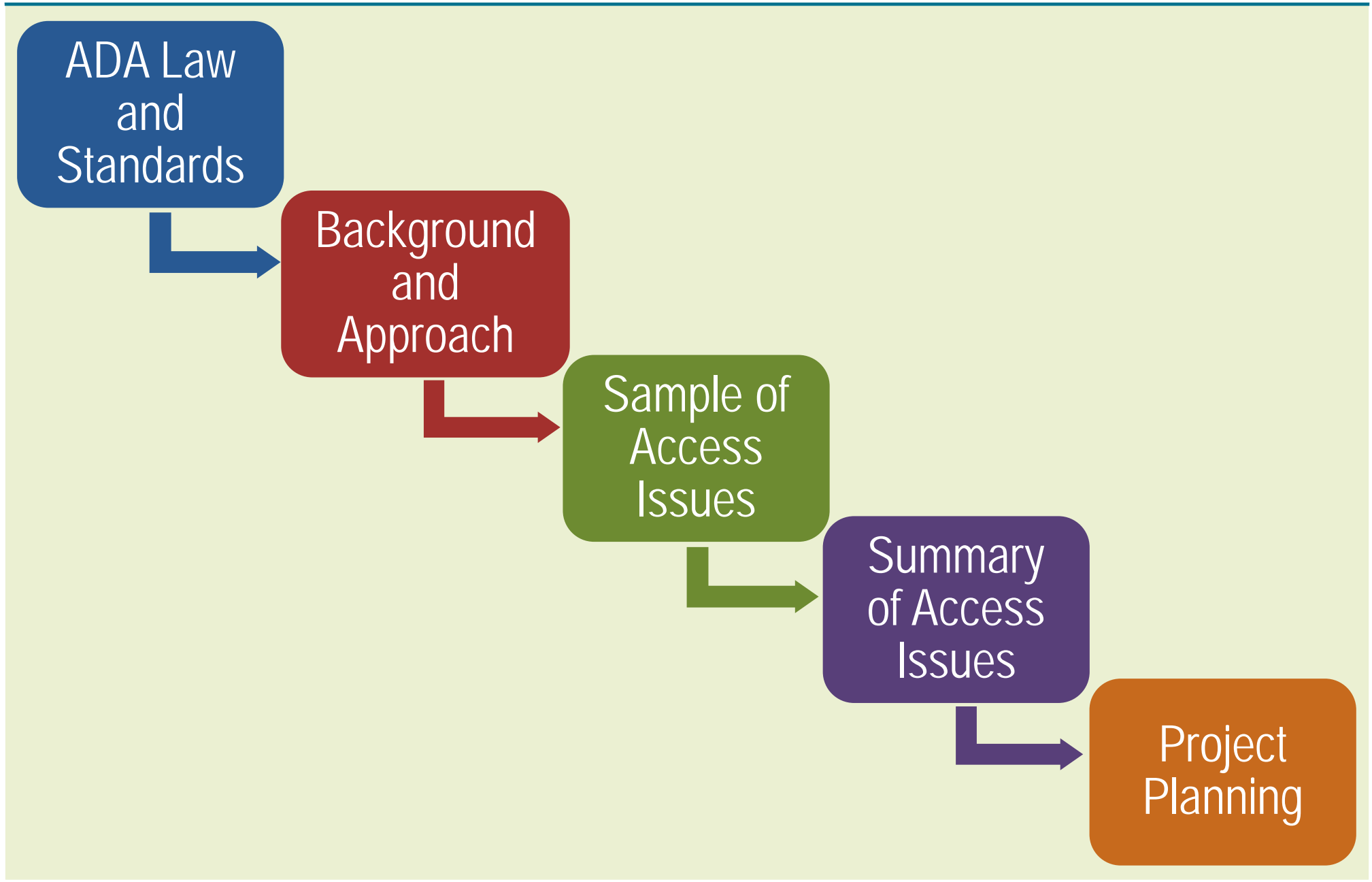




Champaign County ADA Compliance Report Review February 18, 2016





- Americans with Disabilities Act (ADA)
A civil rights law signed on July 26, 1990. The law and compliance requirements were amended in 2010. The law prohibits discrimination on the basis of disability.
- Department of Justice (DOJ)
Responsible for ADA Enforcement. DOJ files lawsuits in federal court to enforce compliance.
- Opinion of Probable Construction Cost (OPCC)
Probable Construction Costs are pre-design estimates and are rounded.
- Illinois Accessibility Code (IAC)
Code intended to ensure all elements of all applicable buildings and facilities in the State of Illinois are designed, constructed, and/or altered to be readily accessible to, and usable by, all people, including environmentally limited persons.
- 2010 ADA Standards for Accessible Design
2010 Standards for State and local facilities including ADAAG and Title 2

- All Champaign County Owned Facilities
- All Head Start program locations in leased facilities
- Site access at County Owned locations
- All locations which host polling
 - All locations host polling
 - Equipment will be provided to allow temporary access to facilities

Champaign County Programs in Leased Space:

Head Start Programs:

- Facilities located in Champaign, Rantoul, Savoy, and Urbana
- Estimated Cost to correct Access Issues: \$70,000

Our vision is to be a recognized leader in local government where every official and employee has a personal devotion to excellence in public service and embraces the highest standards of ethics and integrity to serve the citizens of Champaign County

Champaign County Vision Statement

Background

- Contract between DOJ and Champaign County signed July 20, 2015
- DOJ identified Access Issues at facilities and gave three completion deadlines
 - October 20, 2015
 - January 20, 2016
 - March 20, 2018
- Report of access issue corrections has been sent to DOJ from Bailey Edward for the October and January deadlines

Approach

- Champaign County has corrected many of the access issues economically and with facility staff.
- The March 20, 2018 deadline primarily includes large scope access issues, such as installing compliant parking access, and will require planning and design documents to correct








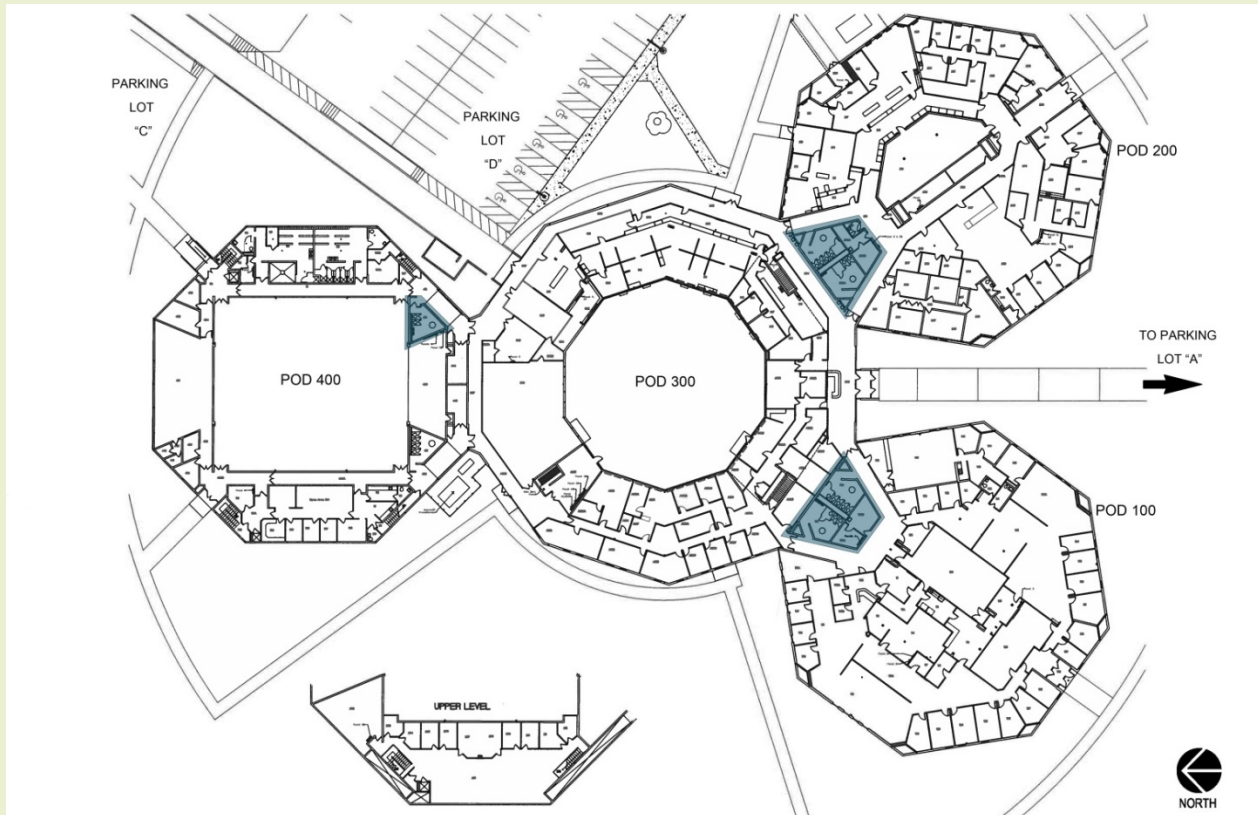
ATTACHMENT J: Modifications to Altered Facilities

The chart below lists the facilities surveyed by the Department, the access issues identified during the survey, and the actions required to correct the access issues. Required actions are listed using an alphanumeric code. The key to the alphanumeric codes is provided in Attachment M to this Agreement.

In order to ensure that the following spaces and elements in the County's facilities in which alterations occurred after January 26, 1992, are readily accessible to and usable by persons with disabilities, the County will take the actions referenced by the alphanumeric code and described in detail in Attachment M to this Settlement Agreement within the time period specified below, which time period will begin to run on the effective date of this Agreement.

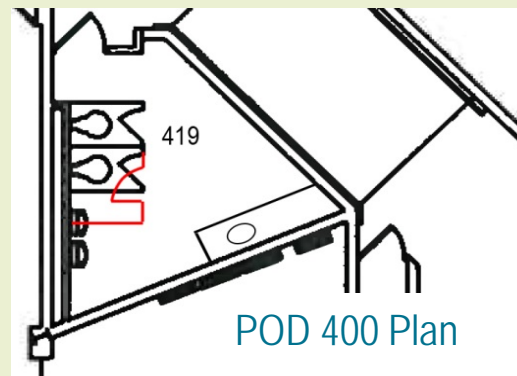
Item #	Access Issue	DOJ Required Action	Completion Deadline	Scheduled Completion Date	A/E Comments	Work by BE / County	Date Completed	Cost	Photo Showing Compliance
4	County Office Building/METCAD-EMA , located at 1905 East Main Street, Urbana, Illinois								
4.1.	Parking:								
4.1.1.a	The parking lot is inaccessible because it has no van accessible parking space.	P5	1/20/2016	1/20/2016	Physical Plant installed install three van accessible signs for each handicap space at the EMA (1905E. Main Street). ADA parking spaces are 96" wide and the off-load space is also 96" wide.	County	11/10/2015		
4.1.1.b	The parking lot is inaccessible because it has no van accessible parking space.	P5	1/20/2016	1/20/2016	Physical Plant installed install three van accessible signs for each handicap space at the EMA (1905E. Main Street). ADA parking spaces are 96" wide and the off-load space is also 96" wide.	County	11/10/2015		
4.1.2.	The designated accessible parking spaces are inaccessible because the vertical signs are mounted with the bottom of the sign less than 60 inches above the ground.	P3	1/20/2016	1/20/2016	Physical Plant has ensured that each of the three accessible signs are a minimum of 60" from bottom edge to ground.	County	11/10/2015		
4.2.	Route from Parking to Entrance: The route from the parking lot to the entrance is inaccessible because it has a slope of 6.8%.	AR1	3/20/2018	3/20/2018	The following work will be surveyed, designed, bid and observed during the construction phase. Remove existing paving or grind and resurface existing paving and construct ADA compliant route.	BE		\$ 5,000.00	insert photo
Total Cost:								\$ 5,000.00	





Modifications:

- **POD 100**
Men's Restrooms – Modify hand dryer and adjust urinal location
Women's Restroom – Modify hand dryer
- **POD 200**
Men's and Women's Restrooms – Provide compliant fixtures. Provide compliant sink and hand dryer.
- **POD 400**
Men's Restroom - Remove one urinal and adjust height of remaining urinal. Provide ADA stall including grab bars. Provide compliant fixtures. Relocate or modify hand dryer to protrude 4" or less.





Site Modifications:

- Parking Lot "A" - Modify existing sections of ADA route to provide compliant slopes and cross slopes.
- Provide wayfinding signage to accessible entrance

Opinion of Probable Construction Cost

Brookens Administrative Center - \$70,600

KEY

-  ACCESSIBLE SPACES
-  ACCESSIBLE ROUTE
-  ACCESSIBLE ENTRANCE - ONLY PUBLIC ENTRANCE



October 20, 2015

- Modifications done by Champaign facilities staff
- Approximate cost: \$9,700
- Approximate labor: 58 hrs.

Examples

- Adjust door closers or purchase of new closers
- Install adjustable key board tray for ADA access
- Adjusted grab bar locations
- Install restrooms mirrors
- ADA parking stall signage

January 20, 2016

- Modifications done by Champaign Facilities staff
- Approximate cost: \$6,100
- Approximate labor: 120 hrs.

Examples

- Relocate room signage to compliant height
- Circulation areas modified for cane detection
- Modify dimensions in restroom stalls
- Reseal and stripe of parking lots
- ADA parking stall signage

March 20, 2018

- Modifications planned to be designed and bid
- Estimated Project Cost: \$534,000 - \$605,000
 - Cost does not include Sheriff's Office/Correctional Center, ADC, Head Start Facilities, or Polling Places
 - Includes estimated and rounded project costs and contingencies

Examples

- Modify slopes to allow compliance for ADA routes to buildings and parking
- Modify Courtroom ramps
- Modify restrooms including plumbing connections
- Modify Courthouse holding cells





Sheriff's Office

- Estimated Cost to correct Access Issues: \$100,900
 - Includes estimated and rounded project costs and contingencies

Examples

- Modify slopes along path to entrance to comply with ADA requirements
- Modify restrooms to comply with ADA requirements
- Provide ADA accessible drinking fountains

Correctional Center

- Estimated Cost to correct Access Issues: \$64,800
 - Includes estimated and rounded project costs and contingencies

Examples

- Provide ADA accessible parking areas
- Provide ADA accessible holding cell and visitation areas.

Adult Detention Center

- Estimated Cost to correct Access Issues: \$52,900
 - Includes estimated and rounded project costs and contingencies

Examples

- Modify slopes to allow compliance for ADA routes to buildings and parking
- Modify restrooms to comply with ADA requirements
- Provide ADA accessible holding cell



Where do we go from here?



Champaign County

Plan to complete access issue compliance by 2018:

- Separate remaining access issue work into two groups
- Group 1 - Complete design documents Spring 2016 and complete construction Fall 2016
- Group 2 - Complete design documents Winter 2016 and complete construction by Fall 2017
- All work complete by Fall 2017
- Submit report March 2018



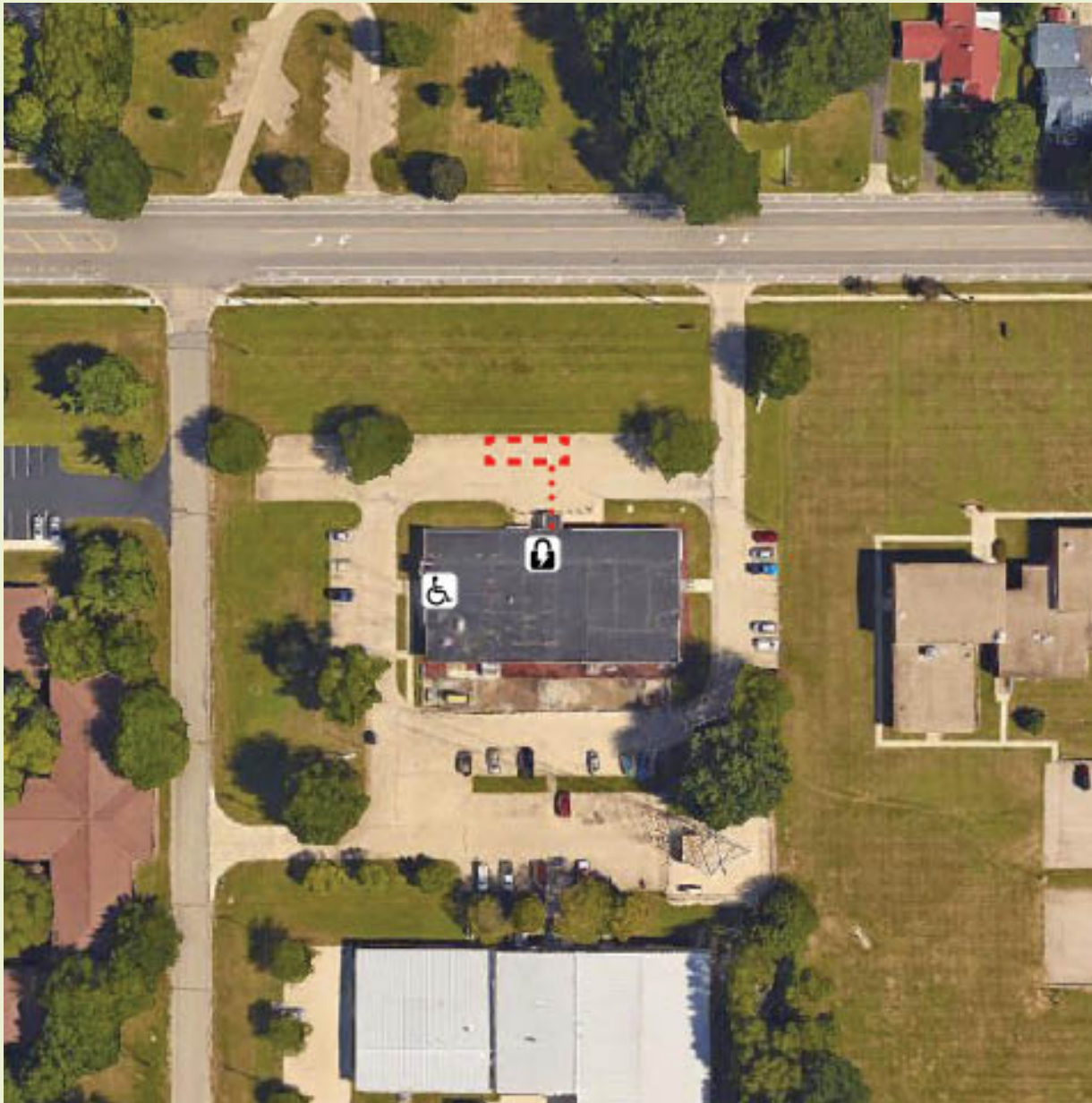


Champaign County



RES





Site Modifications:

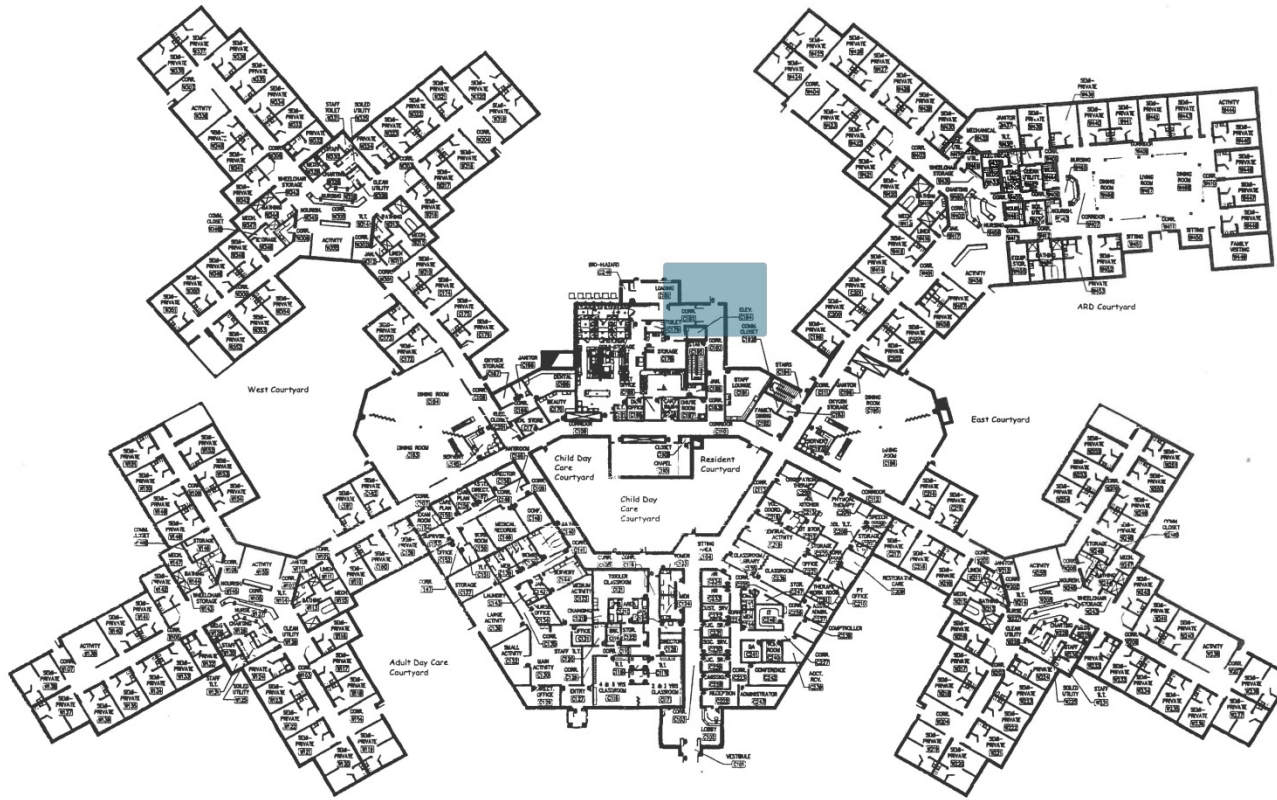
- Create ADA complaint route between ADA designated parking and building

Opinion of Probable Construction Cost

METCAD - \$5,000

KEY

-  ACCESSIBLE SPACES
-  ACCESSIBLE ROUTE
-  ACCESSIBLE ENTRANCE - ONLY PUBLIC ENTRANCE



Modifications:

- Remove concrete at employee entrance door pad and install larger pad to allow clearance on pull side of door
- Correct cross slope at concrete near access to card reader.





Site Modifications:

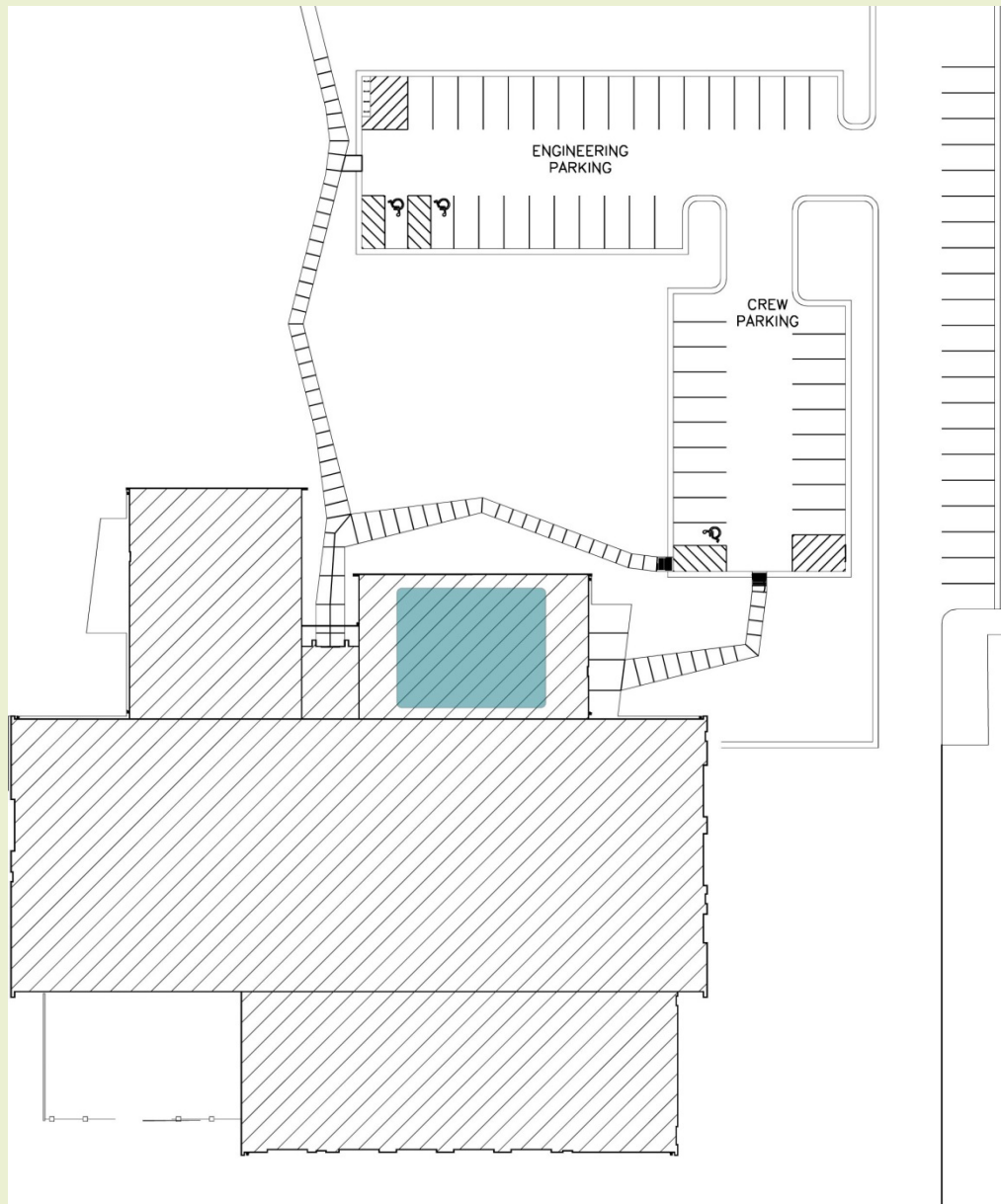
- Modify sidewalk from employee ADA parking to entrance to provide access with compliant cross slope
- Add wayfinding sign to clarify accessible entrance locations

Opinion of Probable Construction Cost

Nursing Home Facility - \$9,000

KEY

- ACCESSIBLE SPACES
- ACCESSIBLE ROUTE
- ACCESSIBLE ENTRANCE - ONLY PUBLIC ENTRANCE



Modifications:

- Men's locker room – Relocate shower controls to comply with ADA
- Women's locker room – Build out wall at toilet stall to provide 16"-18" to centerline of toilet






Site Modifications:

- Modify designated ADA parking areas to provide ADA compliant slope at visitor and employee parking
- Add sign to clarify accessible entrance location

Opinion of Probable Construction Cost

Fleet Maintenance Building - \$14,500

KEY

 ACCESSIBLE SPACES

 ACCESSIBLE ROUTE

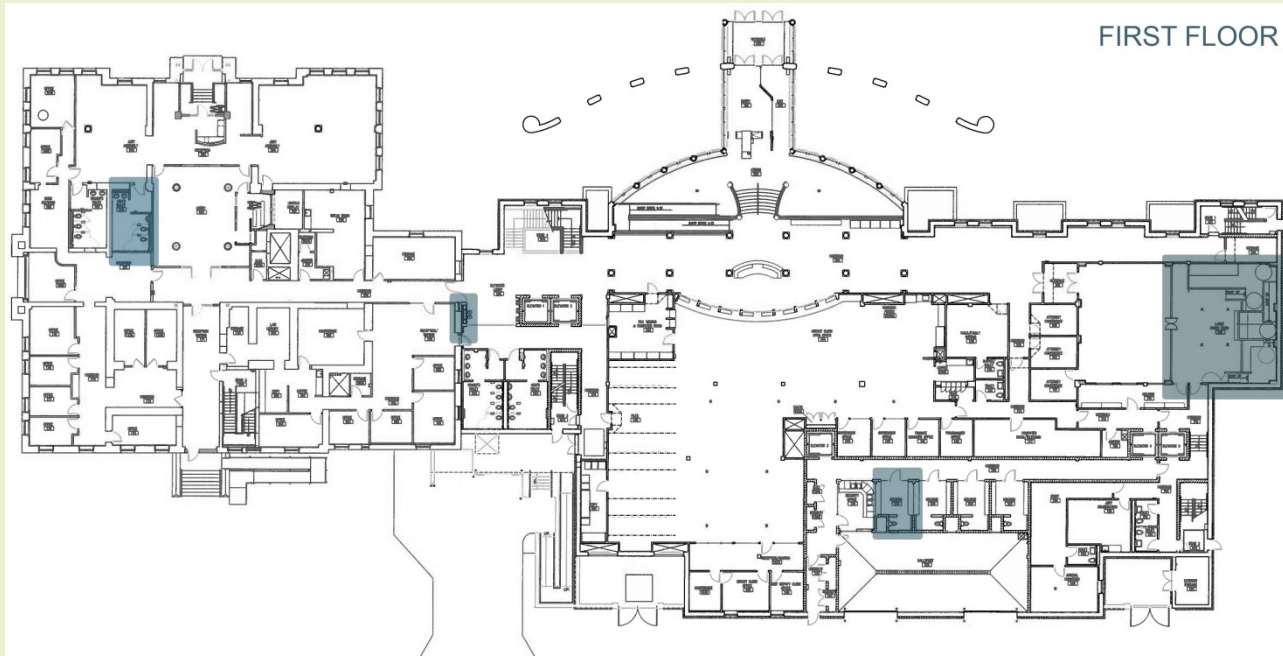


ACCESSIBLE ENTRANCE - ONLY PUBLIC ENTRANCE

Courthouse Building – First Floor

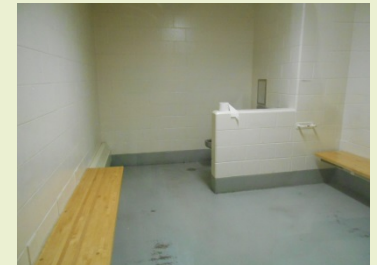
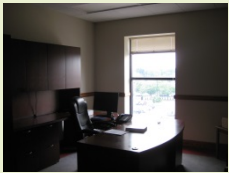


Champaign County



Modifications:

- Jury assembly restroom – Modify partition to allow 16"–18" to center line of toilet
- Provide cane detection at existing electric water cooler
- Holding cell – modify one cell at each level to allow ADA compliance





Modifications:

- Men's room – Provide ADA compliant urinal
- Holding cell – Modify one cell to allow ADA compliance
- Large courtroom - Adjust ramp widths in courtrooms and provide hand rails
- Small courtroom - Adjust ramp slopes and widths in courtroom






Site Modifications:

- Create ADA compliant route and parking area between designated ADA parking and building entrance

Opinion of Probable Construction Cost

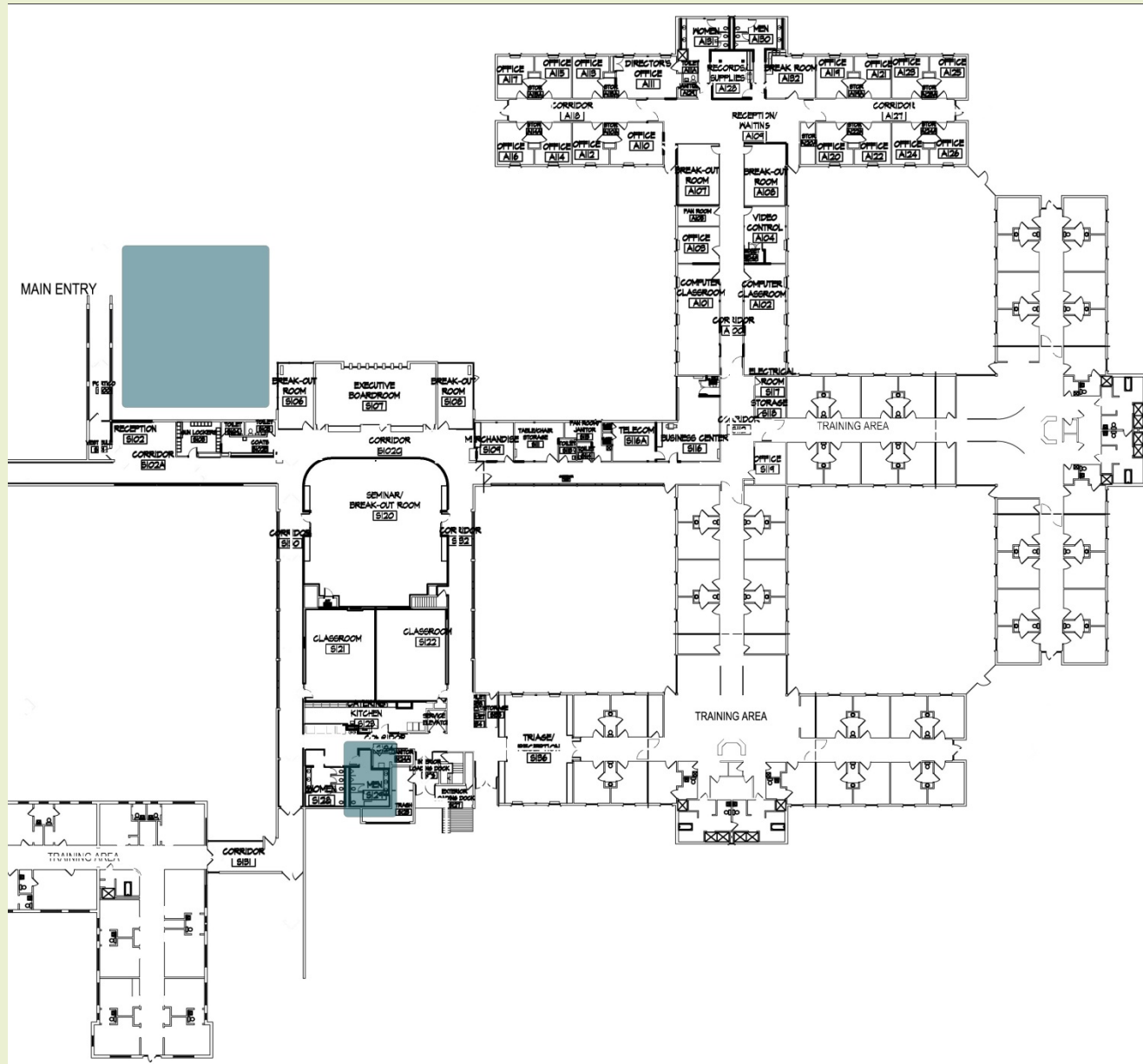
Courthouse Building - \$233,600

KEY

 ACCESSIBLE SPACES

 ACCESSIBLE ROUTE

 ACCESSIBLE ENTRANCE - ONLY PUBLIC ENTRANCE



Modifications:

- Install new ADA compliant ramp between ADA parking and entrance
- Men's Restroom - Build out wall at toilet stall to provide 16"-18" to centerline of toilet




Site Modifications:

- Create ADA complaint route between ADA parking and building
- Add wayfinding sign to clarify accessible entrance locations

Opinion of Probable Construction Cost

ILEASE Training Center - \$14,500

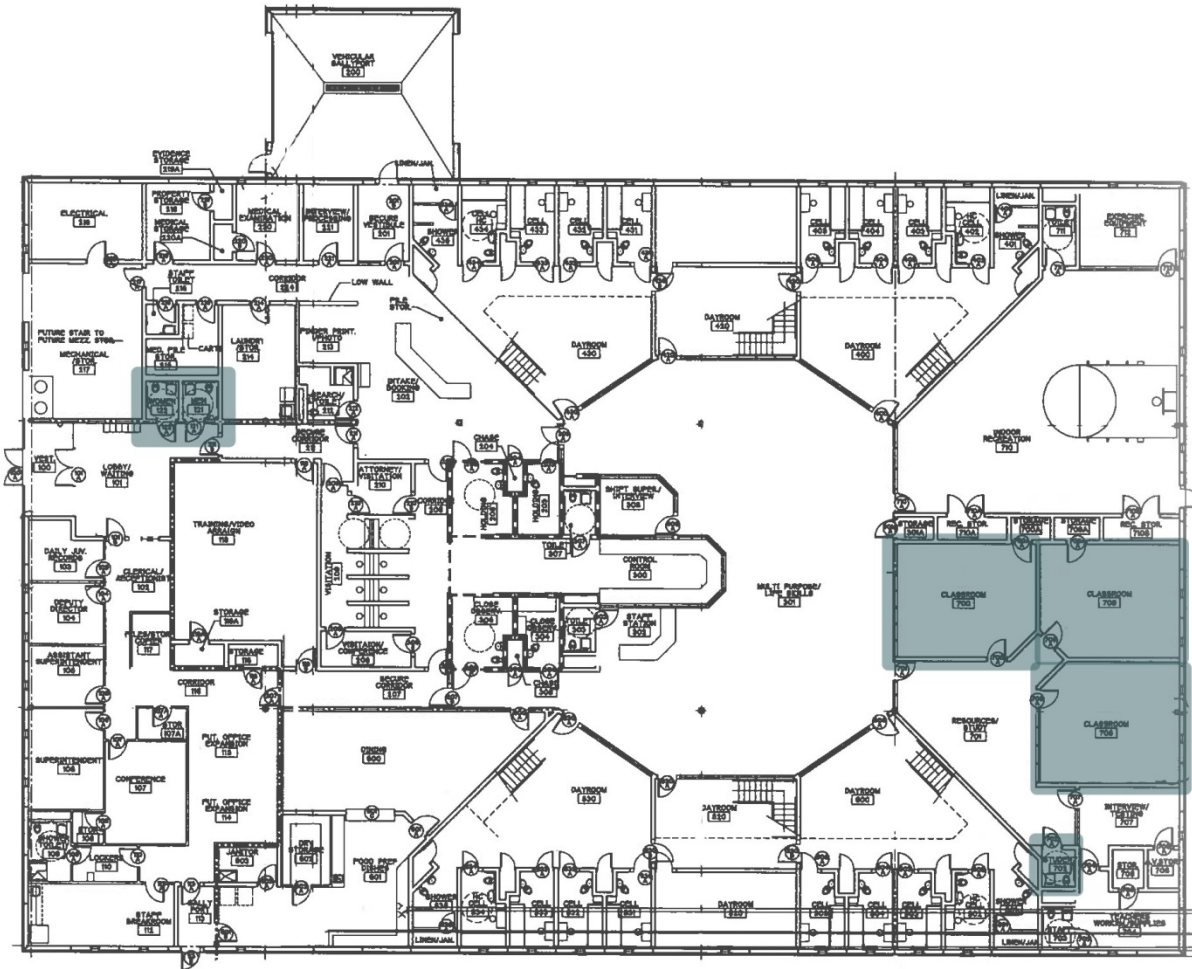
KEY

 ACCESSIBLE SPACES

 ACCESSIBLE ROUTE



ACCESSIBLE ENTRANCE - ONLY PUBLIC ENTRANCE



Modifications:

- Lobby Restrooms
Provide mirror at ADA compliant height, adjust door closer and signage height
- Learning Center Classrooms
Adjust signage height to comply with ADA requirements, adjust door closer and hardware at three classrooms
- Cell Block F Restroom
Modify restroom to comply with ADA requirements



Site Modifications:

- Modify existing sections of ADA designated parking area to provide compliant slopes and cross slopes.

Opinion of Probable Construction Cost

Juvenile Detention Center - \$34,300

KEY

-  ACCESSIBLE SPACES
-  ACCESSIBLE ROUTE
-  ACCESSIBLE ENTRANCE - ONLY PUBLIC ENTRANCE