



CONNECT CHAMPAIGN COUNTY UPDATES

JULY 30TH, 2025



CONNECT Champaign County **Original Project Scope and Partners - Volo**

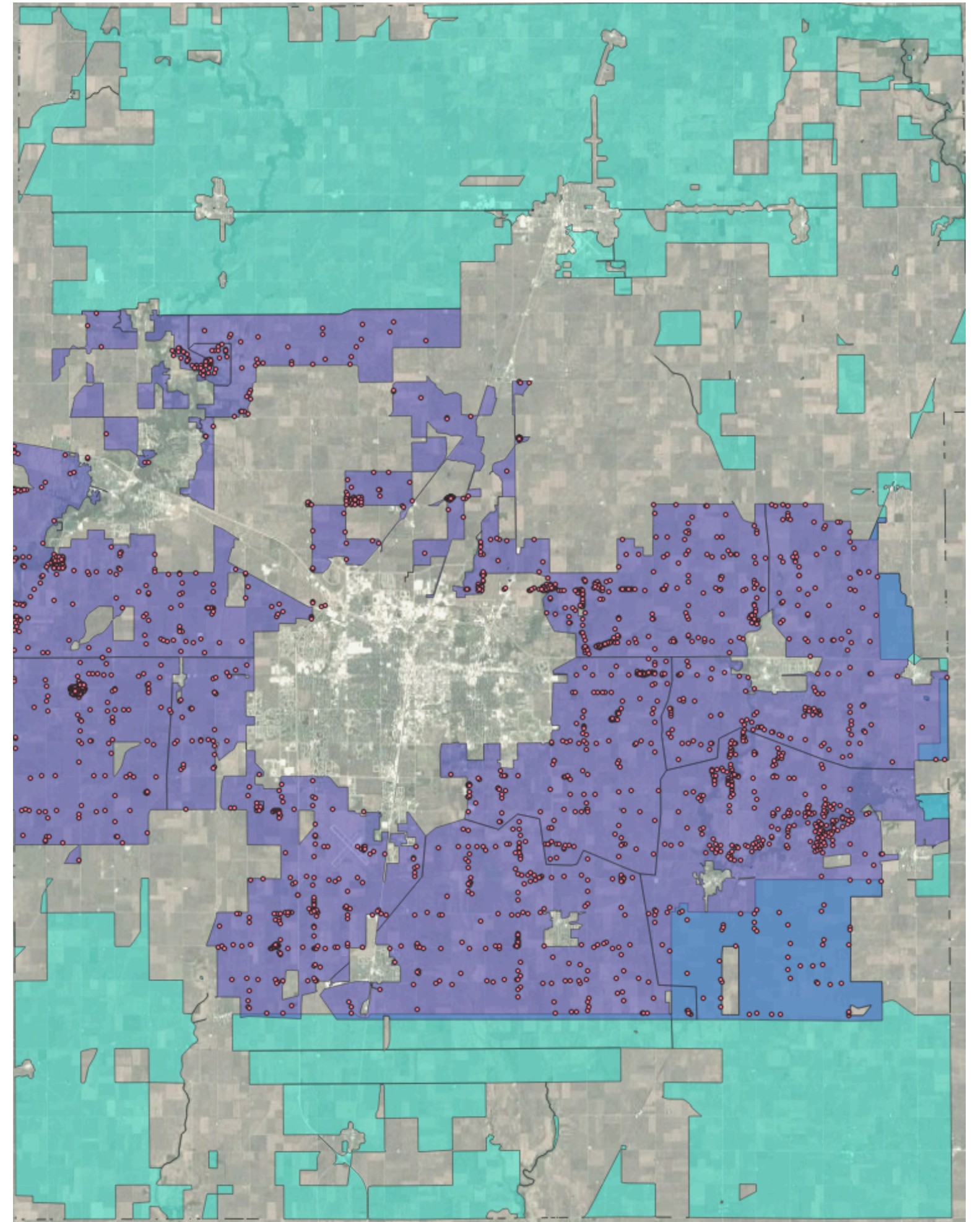
Volo's portion of the CONNECT CC project:

Make fiber available to 1836

- non-RDOF
- unserved/underserved

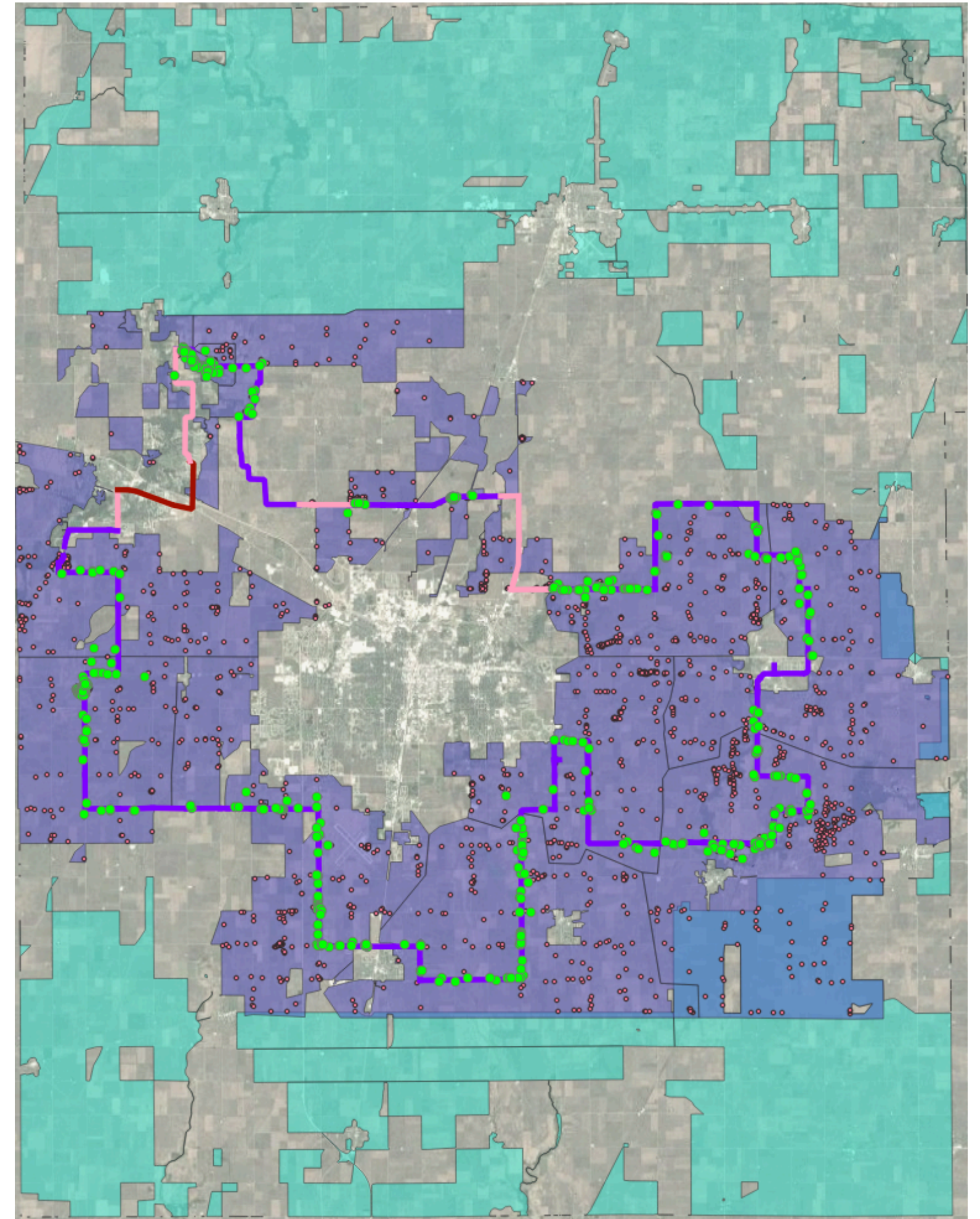
...premises in roughly the central half of Champaign County.

(With updated mapping confirmed with the State of Illinois Office of Broadband as of March 2024, total premises increased to 2262.)



Volo's CONNECT CC Phase 1

- \$13.1M - County + State + Volo
- 576 premises
- 120 mi backbone
- Funded, Underway:
 - Permits, engineering complete
 - Some delays in easements, supply chain
 - Construction Aug-Nov '25
 - Fiber installation Nov '25 - Feb '26
 - Customer installations Feb-May '26



Volo's CONNECT CC

Phase 1

Easements:

- 550 easements required
- 276 acquired to date

Supply chain:

- Duct is on-hand
- Fiber delayed delivery to November

Volo's CONNECT CC

Phase 2

Phase 2A - County and Volo funds for BEAD-ineligible areas

Phase 2B - BEAD funds for BEAD-eligible areas

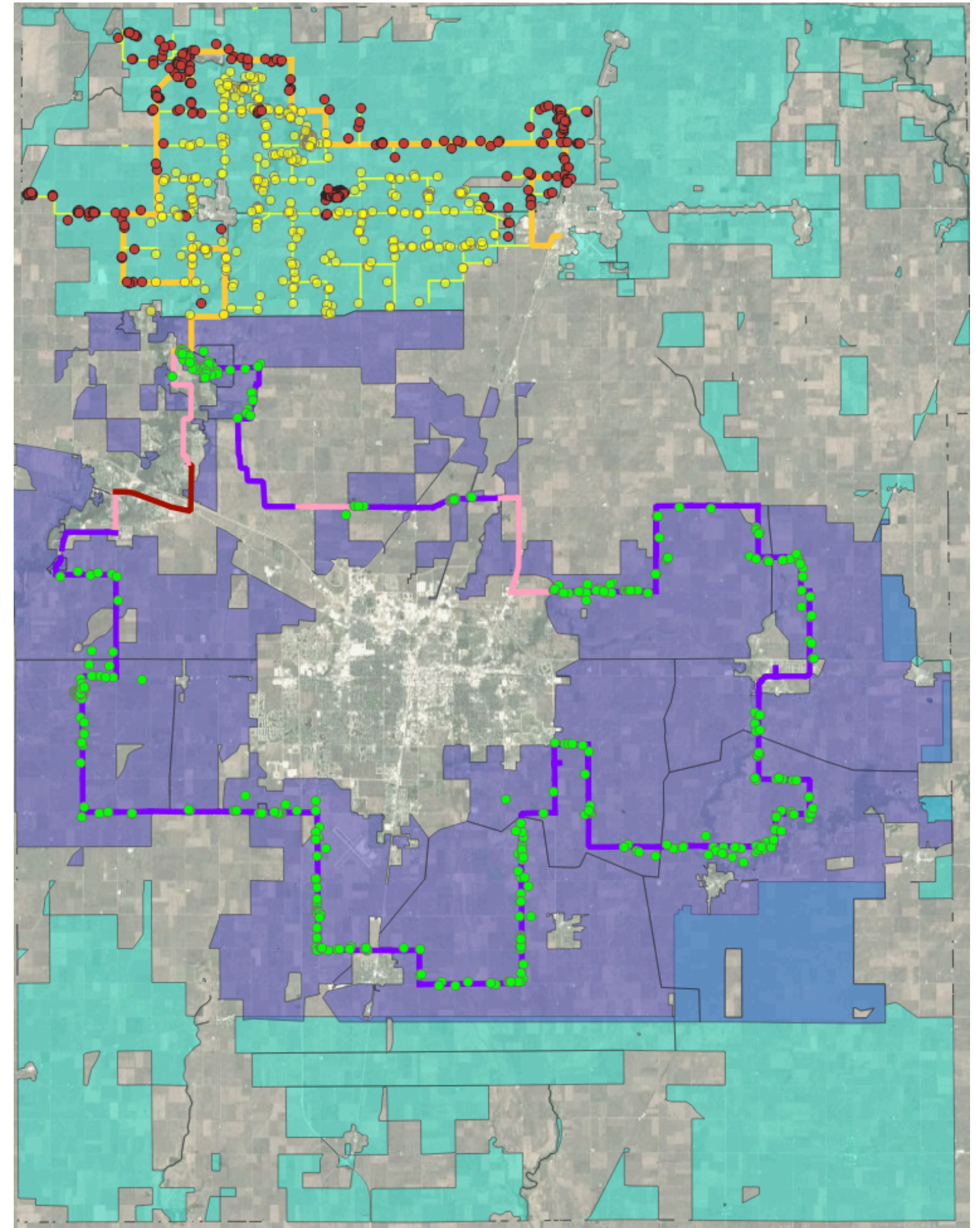
Volo's CONNECT CC

Phase 2A - NW Backbone

Option 2, selected by Broadband Task Force:

- \$6.5M in ARPA + Volo funds
- 659 premises
- 36 miles backbone
- 80 miles distribution
- Timeline:

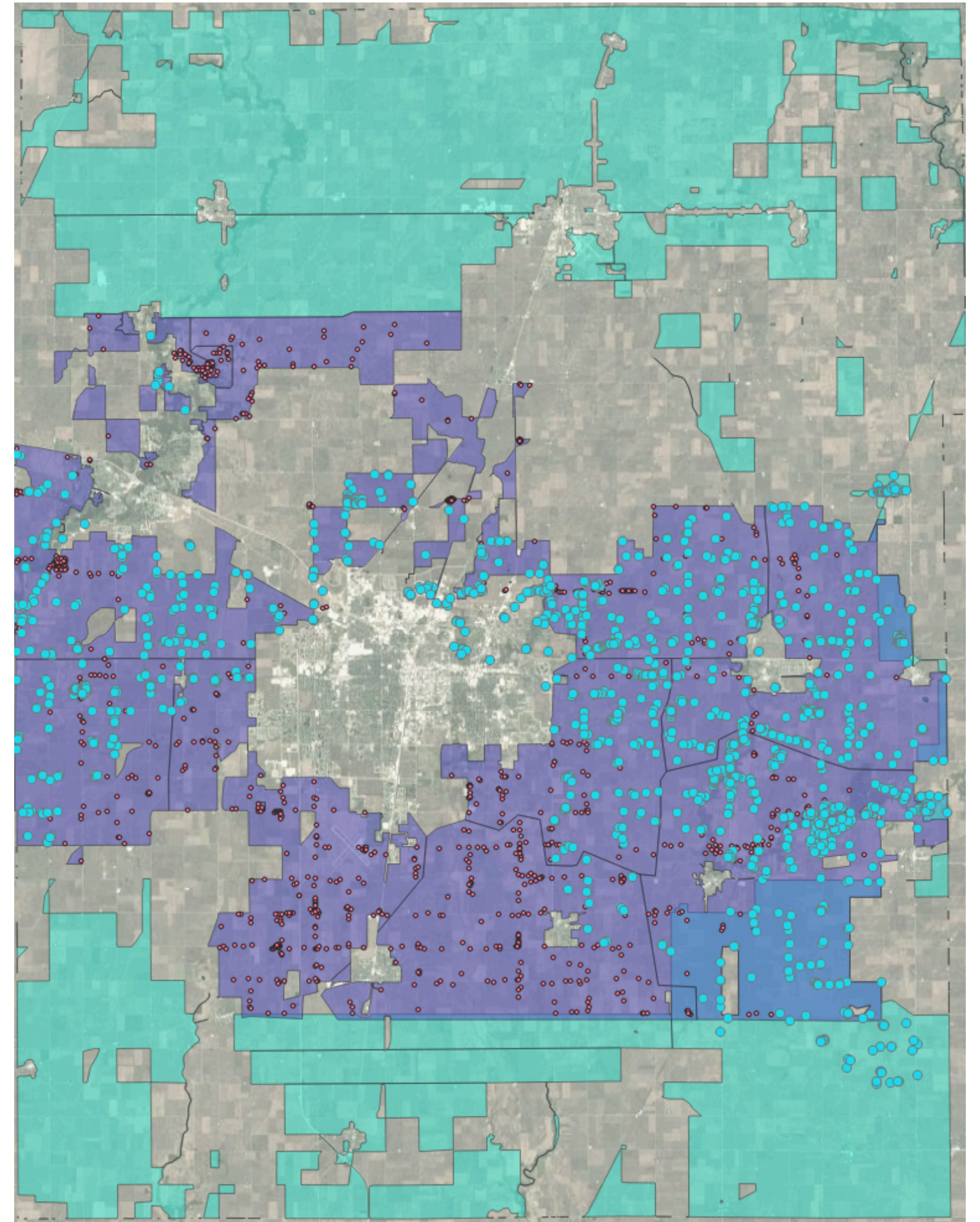
Sep 2025 - Easement Procurement & Permitting
Mar - Oct 2026 - Construction



Volo's CONNECT CC

Phase 2(B) - BEAD Update

- February 2025 - Volo Applied to Connect Illinois Round 4 BEAD WAVE 1
- May 2025 - Volo Preliminarily Awarded \$10.6 Million in additional funds
- June 2025 - Due to changes at NTIA, preliminary awards in Illinois are clawed back
- July 2025 - Volo applies again under new rules; awaiting decision Aug '25
- Current version of application serves 1,335 homes and business, 35 Anchor Institutions



Volo's CONNECT CC **Commitment to Project**

Volo commits to ongoing reporting to the County regarding our progress on a quarterly basis, and continued working with the County Broadband Task Force, UC2B, and other interested parties to promote broadband equity in rural and urban Champaign County, until the problem is solved.



**THANK
YOU**

FOR YOUR ATTENTION

