

Introductory Section

GEORGE P. DANOS, CPA
COUNTY AUDITOR

K. ORION SMITH, CPA
CHIEF DEPUTY AUDITOR



1776 EAST WASHINGTON
URBANA, ILLINOIS 61802
TELEPHONE (217) 384-3763
FAX (217) 384-1285

OFFICE OF THE AUDITOR

CHAMPAIGN COUNTY, ILLINOIS

LETTER OF TRANSMITTAL

March 18, 2022

To the County Board and Citizens of Champaign County:

The Annual Comprehensive Financial Report of the County of Champaign, Illinois for the fiscal year ended December 31, 2020 is submitted herewith. The Annual Comprehensive Financial Report is management's annual financial report to its taxpayers, governing board, oversight bodies, investors and creditors.

This report consists of management's representations concerning the finances of the County of Champaign. Consequently, management assumes full responsibility for the completeness and reliability of all information presented in this report. To provide a reasonable basis for making these representations, County management has established a comprehensive internal control framework that is designed both to protect the government's assets from loss, theft, or misuse and to compile sufficient reliable information for the preparation of the County's financial statements in conformity with Generally Accepted Accounting Principles (GAAP). Because the cost of internal controls should not outweigh their benefits, the County's comprehensive framework of internal controls has been designed to provide reasonable rather than absolute assurance that financial statements will be free from material misstatement. As management we assert that, to the best of our knowledge and belief, this financial report is complete and reliable in all material respects.

The County's financial statements have been audited by Baker Tilly US, LLP, a firm of licensed certified public accountants. The goal of the independent audit is to provide reasonable assurance that the financial statements of the County for the fiscal year ended December 31, 2020 are free of material misstatement. The independent audit involved examining, on a test basis, evidence supporting the amounts and disclosures in the financial statements; assessing accounting principles used and significant estimates made by management; and evaluating the overall financial statement presentation. The independent auditors' report is presented as the first component of the financial section of the report.

The independent audit of the financial statements of the County was part of a broader, federally mandated "Single Audit" designed to meet the special needs of federal grantor agencies. The standards governing Single Audit engagements require an independent auditor to report not only on the fair presentation of the financial statements, but also on the audited government's internal controls and compliance with legal requirements, with special emphasis on internal controls and legal requirements involving the administration of federal awards. These reports are available in the Single Audit Section of this report.

GAAP require that management provide a narrative introduction, overview, and analysis to accompany the basic financial statements in the form of Management's Discussion and Analysis (MD&A). This letter of transmittal is designed to complement the MD&A and should be read in conjunction with it. The County's MD&A can be found immediately following the report of the independent auditors.

Profile of the Government

Incorporated in 1833, Champaign County is located about 135 miles south of Chicago, at the crossroads of Interstates 57, 72, and 74 in the heart of East Central Illinois. The County is nearly 1,000 square miles in area, with a population of 205,865 (2020 census) who live in two cities, 24 incorporated villages, and on rural home sites.

The economic base of Champaign County is comprised largely of education, agriculture and medicine. Champaign County is home to the University of Illinois and enjoys the benefits of both urban and rural life, with abundant cultural and athletic events ranging from performing arts and museums to Big Ten Sports. Champaign County is a regional medical center with two large clinic/hospital complexes. Approximately 85% of Champaign County's land is farmed, with the principal crops being corn and soybeans.

The Champaign County Board is the legislative arm of County Government. The Board consists of 22 board members, 2 from each of the 11 districts. The board members elect a chairman for a two-year term from among the members. There was an appointed county administrator with the responsibility of service to the board until December 1, 2018 when the first elected County Executive was sworn in.

Illinois law determines the functions and services of county government. The largest portion of the County's governmental expenditures are for the administration of justice and public safety, including the State's Attorney, Public Defender, Circuit Clerk, Circuit Court, Court Services (adult and juvenile probation and juvenile detention center), and the Sheriff's functions (road patrol and the county correctional center).

Other functions mandated by state statute include the construction and maintenance of county highways and bridges, the maintenance of the property tax system, voter registration and the election system, vital records such as birth, marriage, and death certificates, and the recording of deeds and other real estate records.

The County has also, until its sale on April 1, 2019, operated a nursing home, funded primarily by patient fees and Medicare/Medicaid reimbursements. Voters approved special property taxes in 1972 to fund mental health services, in 1995 to fund a Cooperative Extension Service, in 1996 to fund public health services for all county residents, in 2002 to fund social security and retirement contributions for Nursing Home employees, and in 2004 to fund services for the developmentally disabled.

The Champaign County Board created the Regional Planning Commission (RPC) in 1966 under state-enabling legislation allowing counties to create planning commissions for the welfare of County residents. Over the past decades, the RPC has expanded its scope beyond land use planning, and has been involved extensively in community and economic development, distribution of federal community services block grant funds, housing programs, weatherization and energy assistance programs, job and police training, transportation planning, senior and social services. In 1994, RPC began the operation of the Champaign County Head Start pre-school program.

There are 185 taxing districts in Champaign County. The County Treasurer is the tax collector for all these districts. In addition, the County Board is responsible for appointing the boards of special districts such as cemetery districts, mass transit, and forest preserve districts. The districts are not considered part of county government since they are independent in setting taxes and budgets.

Factors Affecting Financial Condition

The information presented in the financial statements is perhaps best understood when it is considered from the broader perspective of the specific environment within which the County operates.

Local Economy. Champaign County has not been immune to the effects of the national economic downturn. Still, it has fared better than many other localities in Illinois, due to the area's diverse and relatively stable economic base. The University of Illinois at Urbana-Champaign dominates the local economy with over 24,000 jobs and more than 50,000 students. The Champaign-Urbana area is a regional healthcare center featuring Carle Foundation Hospital and Clinic, Presence Covenant Medical Center, and Christie Clinic. The remaining commercial base of the economy is primarily comprised of retail, food, service, and agriculture. The average unemployment rate for Champaign County decreased to 5.6% in 2020, an increase from the previous year's rate of 2.8%. This rate is lower than the state rate of 8.0% and below the national rate of 6.7% at the close of 2020.

Long Term Financial Planning. The ending budgetary-basis fund balance for the general fund sits at 24% of actual total general fund expenditures and transfers out at the close of the fiscal year ended December 31, 2020. This fund balance represents an increase of \$2.04 million from fiscal year 2019. A minimum fund balance of 45-days or 12.5% of operating expenditures is set forth in policy guidelines adopted by the County Board for budgetary and planning purposes.

On April 1, 2019, Champaign County finalized the sale of the newly renamed University Rehabilitation Center. The County has guaranteed payments for all residents in Public Aid Pending (PAP) status at the time of closing through the end of calendar year 2020. In addition, the county continues to pay obligations of the Home from before the sale.

Fiscal Year. On March 21, 2013, the County Board approved Resolution 8468 which changed the County's old fiscal year of December 1st through November 30th, to a fiscal year based on the calendar year, namely January 1st through December 31st.

Cash Management Policies and Practices. The County's investment policy is to minimize risk while maintaining a competitive yield. Cash temporarily idle during the year was invested in certificates of deposit, money market accounts, and the State Treasurer's investment pool. County government is restricted in its investment options by state law and will remain in conservative investment portfolios.

As of December 31, 2020, the County had \$60,953,624 in cash on hand, demand deposits, and various investment instruments. Details of the County's deposits and investments are explained in Note 5 of the Notes to the Financial Statements.

Risk Management. The County maintains a self-funded insurance fund for worker's compensation insurance and liability and auto insurance. The County's risk retention for worker's compensation insurance is \$300,000 per individual per claim and for liability and auto insurance is \$250,000 per occurrence. Commercial insurance has been purchased for claims in excess of this retention. Additional information on the County's risk management activity can be found in Note 14 of the Notes to the Financial Statements.

Pension and Other Post-Employment Benefits. The County provides pension benefits for its employees through a state-wide plan managed by the Illinois Municipal Retirement Fund (IMRF). The County has no obligation in connection with pension benefits offered through this plan beyond its annual contributions to IMRF. Additional information on the County's pension arrangements can be found in Note 19 of the Notes to the Financial Statements.

The County provides other post-employment benefits (OPEB) to employees in the form of an implicit rate subsidy for retirees' health insurance premiums. Although retirees pay the entire amount of their health insurance premiums, the premiums are set at a blended rate based on the entire group, which includes younger, healthier active employees along with the retirees. Thus, the retirees pay premiums that are lower than the true cost of the healthcare benefits they receive. See Note 20 in the Notes to the Financial Statements for further discussion of OPEB.

Acknowledgements

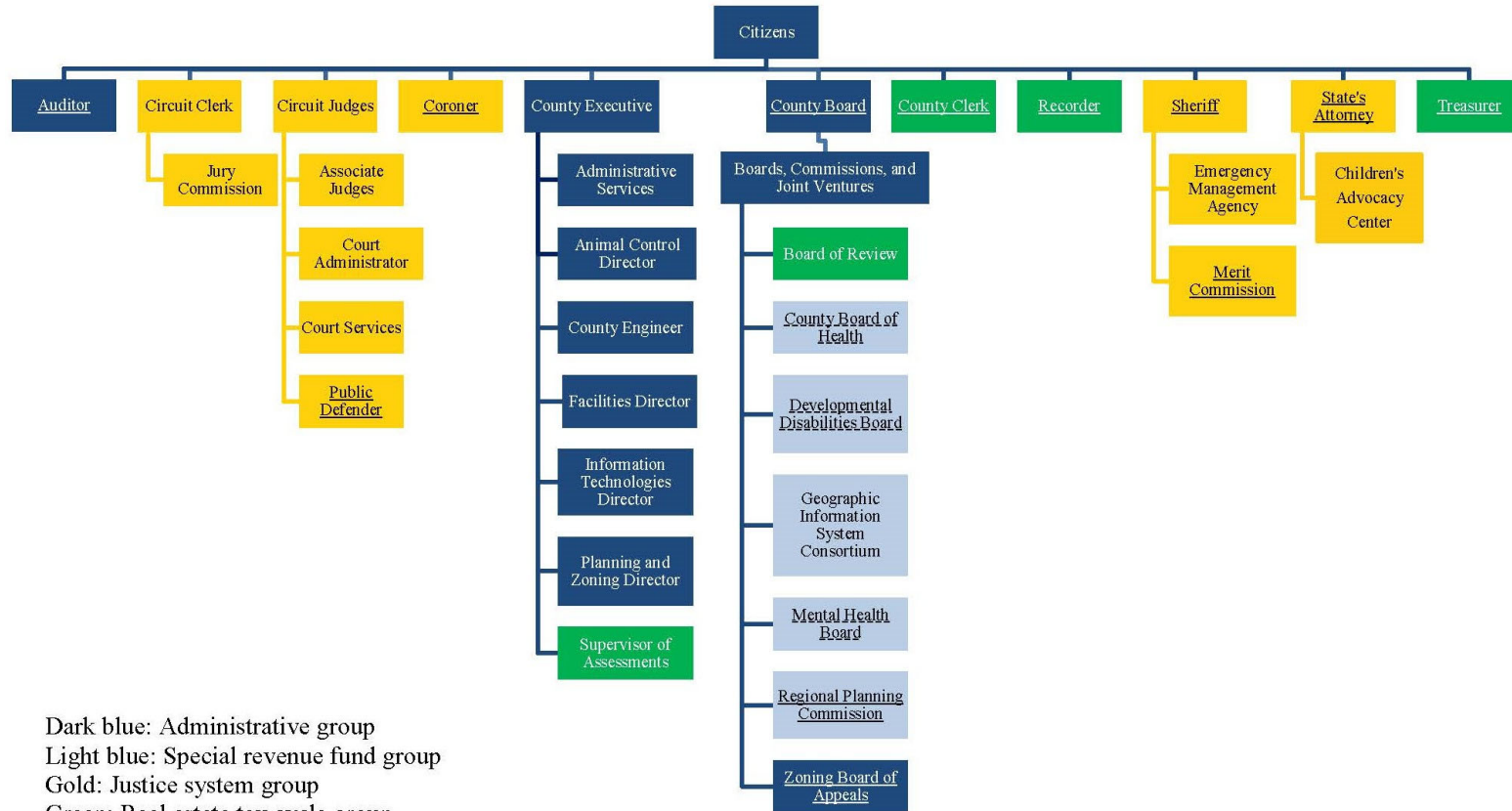
I would like to thank the entire staff for their hard work, and contributions to this year's Comprehensive Annual Financial Report. I also would like to recognize the Champaign County Board, County Administrator and Accounting Manager for their support in maintaining the highest standards of professionalism regarding the management of County's finances. Countywide Elected Officials and Department Heads were also helpful and cooperative during the audit process.

Respectfully submitted,



GEORGE P. DANOS
CHAMPAIGN COUNTY AUDITOR

**COUNTY OF CHAMPAIGN, ILLINOIS
ORGANIZATION CHART
DECEMBER 31, 2020**



Dark blue: Administrative group

Light blue: Special revenue fund group

Gold: Justice system group

Green: Real estate tax cycle group

Solid underline: Offices, officers, and/or employees created by the Illinois Counties Code (55 ILCS 5/)

Dashed underline: Boards created by referendum

Notes:

- Appointed boards operate with different degrees of independence. The Mental Health Board, Developmental Disability Board and County Public Health Board are appointed by the County Board. Their budgets and tax levies require County Board approval, but their expenditures do not.
- The Board of Review and Zoning Board of Appeals are appointed by the County Board and their budgets and expenditures require County Board approval.
- The Regional Planning Commission consists of two members of the County Board, the Chairman of the County Board (an ex-officio member), the mayors of Champaign, Urbana, and Rantoul, a second representative appointed by Champaign and a second representative appointed by Urbana. One additional member, elected by the RPC Commission members, serves as minority representative. The RPC budget and expenditures require County Board approval, but the Board has delegated expenditure oversight to the Commissioners.

**COUNTY OF CHAMPAIGN, ILLINOIS
PRINCIPAL OFFICIALS: ELECTED
DECEMBER 31, 2020**

Auditor

George Danos

Circuit Clerk

Susan McGrath

Circuit Judges

Jason Bohm
Benjamin Dyer
Sam Limentato
Randall Rosenbaum
Ramona Sullivan
Roger Webber

Coroner

Duane Northrup

County Clerk

Aaron Ammons

Recorder

Mike Ingram

Sheriff / Supervisor of Safety

Dustin Heuerman

State's Attorney

Julia Rietz

Treasurer / Collector

Cassandra Johnson

County Board Members

Titiana Ammons
Lorraine Cowart
Aaron Esry
Stephanie Fortado
Jim Goss
Stanley Harper
Jordan Humphrey
Mary King
Jim McGuire
Diane Michaels
Brad Passalacqua
Kyle Patterson
Jacob Paul
Emily Rodriguez
Chris Stohr
Jennifer Straub
Steve Summers
Leah Taylor
Eric Thorsland
DeShawn Williams
Jodi Wolken

**COUNTY OF CHAMPAIGN, ILLINOIS
PRINCIPAL OFFICIALS: APPOINTED
DECEMBER 31, 2020**

Animal Control Director

Stephanie Joos

Emergency Management

Agency Director

John Dwyer

Associate Circuit Judges

Ronda H. Holliman

Brett N. Olmstead

John R. Kennedy

Anna M. Benjamin

Adam M. Dill

Mental Health Board

Executive Director

Lynn Canfield

Board of Review Chairman

Zebo Zebe

Public Defender

Janie Miller-Jones

Child Advocacy Center

Executive Director

Kari May

Regional Planning Commission

Chief Executive Officer

Dalitso Sulamoyo

County Highway Engineer

Jeffrey Blue

Supervisor of Assessments

Paula Bates

Court Services Director

Michael Williams

Zoning and Enforcement Director

John Hall

**COUNTY OF CHAMPAIGN, ILLINOIS
GENERAL INFORMATION
DECEMBER 31, 2020**

DATE OF INCORPORATION: February 20, 1833

FORM OF GOVERNMENT: 22-member County Board, 2 representatives from each of eleven districts

COUNTY EMPLOYEES: 724 Full Time, 352 Part Time

COUNTY SEAT: Urbana (which, with its twin city of Champaign, is the urban center of the County)

LAND AREA: 1,008 square miles (645,120 acres)

POPULATION:	U.S. Census	1950	106,100
		1960	132,436
		1970	163,281
		1980	168,392
		1990	173,025
		2000	179,669
		2010	201,081
		2020	205,865

COUNTY ROADS: 193 miles of paved roads under County jurisdiction.

TRANSPORTATION: Passenger airlines (1); railroad lines (1); bus lines (3); major federal and state highways, including 3 interstate highways.

AGRICULTURE: Corn and soybeans are the major crops. Per the USDA Census of Agriculture:

<u>Year</u>	<u>Farmland Acreage</u>	<u>% of Farmland To Total Acreage</u>
1987	594,227	93.2%
1992	571,807	89.7%
1997	567,697	89.0%
2002	577,066	90.5%
2007	550,481	86.3%
2012	616,493	96.7%
2017	582,689	91.4%

MAJOR INSTITUTIONS:

University of Illinois: The County's largest single employer, this 2,295 acre main campus of the state university employs 14,300 people, including 5,530 faculty and instructional staff; 4,077 academic professionals; and 4,132 support staff. Student enrollment is 56,299

Parkland Community College: A two-year community college with 5,758 students and 664 employees, Parkland serves portions of twelve counties in East Central Illinois.

**COUNTY OF CHAMPAIGN, ILLINOIS
FUND DESCRIPTIONS
DECEMBER 31, 2020**

GOVERNMENTAL FUNDS

General Corporate Fund 080: The principal operating fund of the County finances most activities for which there is no specific tax levy or user fee. The General Corporate property tax rate limit is .25% [Illinois Compiled Statutes 55 ILCS 5/5-1024]. An additional property tax for cooperative extension education, passed by referendum in November, 1995, has a limit of .03% [505 ILCS 45/8]. Proceeds from the cooperative extension tax levy are passed on to the University of Illinois.

Special Revenue Funds

Animal Control Fund 091: License and other fees to provide for the registration of dogs and cats, impoundment of strays, and rabies control. Use is restricted by state statute [510 ILCS 5/7] and County Ordinance [No. 822].

Cannabis Regulation Fund 635: State tax funding for crime prevention programs, training, and interdiction efforts, including detection, enforcement, and prevention efforts relating to illegal cannabis market and driving under the influence of cannabis.

Child Advocacy Center Fund 679: Federal, state and local grant funding for the operation of a child advocacy center to provide abuse prevention education, compassionate support to abused children and coordination of the investigation and prosecution of abuse cases. Use is restricted by the grant agreements.

Child Support Services Fund 617: Fee for the Circuit Clerk to administer the collection and distribution of child support payments. Use is restricted by state statute [705 ILCS 105/27.2a(bb)(4)].

Circuit Clerk Electronic Citations Fund 632: Fee for the Circuit Clerk to establish and maintain a system of electronic citations. Use is restricted by state statute [705 ILCS 105/27.3e].

Circuit Clerk Operations and Administration Fund 630: Fee for the Circuit Clerk to offset the costs of collecting and disbursing funds to entities of state and local governments. Use is restricted by state statute [625 ILCS 5/16-104c(b), 705 ILCS 105/27.3d].

County Bridge Fund 084: Property tax for the construction and maintenance of county bridges. Also provides 50% of the cost of bridge construction in rural townships. Rate limit is .05%. Use is restricted by state statute [605 ILCS 5/5-602].

County Clerk Surcharge Fund 611: Fees collected on death certificates and marriage/civil union licenses issued by the County Clerk. Use is restricted by state statute [410 ILCS 535/25, 55 ILCS 5/4-4001].

County Clerk's Automation Fund 670: Fee for automating the County Clerk's vital records storage system. Use is restricted by state statute [55 ILCS 5/4-4001].

County Highway Fund 083: Property tax for maintenance of county highways. Rate limit is 10%. Use is restricted by state statute [605 ILCS 5/5-601].

County Highway IDOT Rebuild Grant Fund 120: State grant funds to be used on county transportation projects with an average useful life greater than or equal to 13 years.

County Historical Fund 629: Donated funds for the purpose of establishing a museum in the County Courthouse. Use is restricted by donor designations.

County Jail Medical Costs Fund 659: Court fee for the Sheriff to defray the cost of medical expenses for persons under arrest. Use is restricted by state statute [730 ILCS 125/17].

**COUNTY OF CHAMPAIGN, ILLINOIS
FUND DESCRIPTIONS
DECEMBER 31, 2020**

Special Revenue Funds (continued)

County Motor Fuel Tax Fund 085: State shared revenue from motor fuel taxes for construction and maintenance of county highways. Use is restricted by state statute [605 ILCS 5/5-701].

County Public Health Fund 089: Property tax to provide community health services, such as immunizations and restaurant inspections. Rate limit is .10% by referendum passed November, 1996. Use is restricted by state statute [55 ILCS 5/5-25003 and 5/5-25010].

Court Document Storage Fund 671: Fee to defray the cost of establishing and maintaining a document storage system for county court records, administered by the Circuit Clerk. Use is restricted by state statute [705 ILCS 105/27.3c].

Court's Automation Fund 613: Fee for automating court records, administered by the Circuit Clerk. Use is restricted by state statute [705 ILCS 105/27.3a].

Developmental Disability Fund 108: Property tax to provide funding for the care and treatment of persons with a developmental disability. Rate limit is .10% by referendum passed November, 2004. Use is restricted by state statute [55 ILCS 105/1].

Early Childhood Fund 104: Federal and state grants for education and development programs, commonly known as Head Start, for low-income pre-school children and their families. Use is restricted by grant agreements.

Election Assistance / Accessibility Grant Fund 628: Federal and state grants to improve voter accessibility at election polling sites, administered by the County Clerk. Use is restricted by grant agreements.

Foreclosure Mediation Fund 093: Self-funded program designed to reduce the burden of expenses sustained by lenders, borrowers, and taxpayers as a result of residential mortgage foreclosures. Also designed to aid the administration of justice by the reduction of court cases; keeping families in homes, and preventing vacant and abandoned houses.

Geographic Information System Fund 107: Fee collected by the County Recorder for the County Board to create and maintain a county-wide map through a geographic information system. Use is restricted by state statute [55 ILCS 5/3-5018].

Highway Federal Aid Matching Fund 103: Property tax to pay for engineering and right-of-way costs, utility relocations and the County's share of construction on specific federal highway projects. Rate limit is .05%. Use is restricted by state statute [605 ILCS 5/5-603].

Illinois Municipal Retirement Fund 088: Property tax for employer's share of IMRF pension plan for County employees. There is no rate limit. Use is restricted by state statute [40 ILCS 5/7-171 and 40 ILCS 5/22-403].

Jail Commissary Fund 658: Accounts for the purchase and sale of sundries to prisoners in the Correctional Center. Use is restricted by State of Illinois Administrative Code [Title 20, Chapter I, Subchapter f, Part 701, Section 701.250].

Law Library Fund 092: Court fees to maintain the law library in the courthouse. Use is restricted by state statute [55 ILCS 5/5-39001].

Mental Health Fund 090: Property tax to provide funding to mental health agencies. Rate limit was originally .10% by referendum passed November, 1972, then later revised by a legislative change to .15%. Use is restricted by state statute [405 ILCS 20/4].

**COUNTY OF CHAMPAIGN, ILLINOIS
FUND DESCRIPTIONS
DECEMBER 31, 2020**

Special Revenue Funds (continued)

MHB/DDB CILA Facilities Fund 101: Community Integrated Living Arrangement (CILA) provides for small "group" homes in Champaign County for persons with I/DD.

Nursing Home Post-Closure Fund 081P: Operating fund for the handling of collections and disbursements in association with closure of the County Nursing Home.

Probation Services Fund 618: Court fees to be used on direction of the chief judge of the circuit court to pay costs, other than salaries, of operating the County's Court Services Department. Use is restricted by state statute [730 ILCS 110/15.1].

Property Tax Interest Fee Fund 627: Fee on properties sold at tax sales to be used by the County Treasurer to pay interest and costs on property tax sales in error. Use is restricted by state statute [35 ILCS 200/21-330].

Public Defender Automation Fund 615: Fee for automating court records, administered by the Circuit Clerk. Use is restricted by state statute [705 ILCS 105/27.3a].

Public Safety Sales Tax Fund 106: One-quarter percent special retailer's occupation tax imposed by the County Board upon approval by the voters in November 1998. Use is restricted to public safety purposes by state statute [55 ILCS 5/5-1006.5]. The County Board has further designated this revenue to repay bonds issued to finance construction of public safety facilities and to support other public safety programs, such as juvenile delinquency prevention and courts technology.

Recorder's Automation Fund 614: Fee for automating records in the Recorder's Office. Use is restricted by state statute [55 ILCS 5/3-5018].

Regional Planning Commission Fund 075: Federal and state grants for economic development, community services, senior services, energy assistance, transportation engineering and police training, plus contracts with local agencies for planning and other technical assistance. Use is restricted by grant agreements and contracts.

Regional Planning Commission Economic Development Loan Fund 475: Federal grants for low interest loans to new or expanding businesses, or for rehabilitating rental/housing properties. Loan repayments are used to fund loans to new applicants. Use is restricted by grant agreements.

Regional Planning Commission USDA Revolving Loan Fund 474: Federal grants for loans to promote growth of existing and new businesses in rural areas in a six-county region. Use is restricted by grant agreements.

Sheriff Drug Forfeitures Fund 612: Forfeitures from drug cases distributed by the Illinois State Police for the Sheriff to use in the enforcement of laws governing controlled substances. Use is restricted by state statutes [720 ILCS 550/12(g), 720 ILCS 570/505(g)].

Social Security Fund 188: Property tax for employer's share of social security (FICA) for County employees. There is no rate limit. Use is restricted by state statute [40 ILCS 5/21- 110].

Solid Waste Management Fund 676: Waste hauler license fees authorized by state statute [55 ILCS 5/5-8002 and 5/5-8003]. By resolution [No. 7972] adopted in November 2011, the County Board has committed these fees to expenditures that will support the initiatives identified in the Champaign County Solid Waste Management Plan.

Specialty Courts Fund 685: Specialized probation program administered by the Mental Health Board with the goal of reducing the number of drug offenders who are incarcerated and who re-offend. Funding comes from a court-assessed fee, which is sometimes supplemented by federal grant funds. Use is restricted by state statute [55 ILCS 5/5- 1101(f)] and grant agreements.

**COUNTY OF CHAMPAIGN, ILLINOIS
FUND DESCRIPTIONS
DECEMBER 31, 2020**

Special Revenue Funds (continued)

State's Attorney Drug Forfeitures Fund 621: Forfeitures from drug cases distributed by the Illinois State Police for the State's Attorney to use in the enforcement of laws governing narcotics activity. Use is restricted by state statute [720 ILCS 550/12(g) and 720 ILCS 570/505(g)].

State's Attorney Records Automation Fund 633: Funds will be used by the State's Attorney to establish and maintain automated record keeping systems including but not limited to expenditure for hardware, software, research and developments costs and associated personnel costs [55ILCS 5/4-2002].

Tax Sale Automation Fund 619: Fee for the automation of property tax collections and delinquent property tax sales, administered by the County Treasurer. Use is restricted by state statute [35 ILCS 200/21-245].

Tort Immunity Fund 076: Property tax to pay for property insurance, liability insurance, workers' compensation insurance, unemployment insurance, and judgments against the County. There is no rate limit. Use is restricted by state statute [745 ILCS 10/9-107].

Township Bridge Fund 087: State funding for construction of township bridges over 20 feet in length, administered by the County Highway Engineer in a trustee capacity on behalf of the various townships. This funding is not available to support County programs.

Township Motor Fuel Tax Fund 086: State funding from motor fuel taxes for township road maintenance and construction, administered by the County Highway Engineer in a trustee capacity on behalf of the various townships. This funding is not available to support County programs.

Township Highway IDOT Rebuild Grant Fund 121: State grant funds to be used on transportation projects with an average useful life greater than or equal to 13 years.

Victim Advocacy Grant Fund 675: Federally funded grant to provide services to victims of violent crime, including juvenile crime and offenses, through a Victim Advocacy Program Director in the State's Attorney's Office. Use is restricted by the grant agreement.

Workforce Development Fund 110: Federal grants for education and workforce development programs, provided by the federal Workforce Investment Act (WIA), for job seekers, laid off workers, youth, incumbent workers, new workers, veteran, persons with disabilities and employers. Use is restricted by grant agreements.

Working Cash Fund 610: Property tax (1976 and 1977 only) to provide working cash to avoid issuance of tax anticipation notes or warrants. Fund balance is to be held constant at \$377,028. Rate limit is .025%. Use is restricted by state statute [55 ILCS 5/6-29003].

Debt Service Funds

2003 Series Nursing Home Bond Debt Service Fund 074: Property tax (no rate limit) for repayment of bonds issued in 2003 to finance construction of a nursing home facility. Bonds are scheduled for retirement through 2022. Use is restricted by bond covenants.

Capital Projects Funds

Capital Asset Replacement Fund 105: Fund started in FY2000 to accumulate resources assigned by the County Administrator to the planned replacement of capital assets for General Corporate Fund departments. This fund was previously reported as a special revenue fund, but was reclassified in FY2011.

**COUNTY OF CHAMPAIGN, ILLINOIS
FUND DESCRIPTIONS
DECEMBER 31, 2020**

Capital Projects Funds (continued)

Court Complex Construction Fund 303: To account for the construction of a new court facility and the remodeling of the old courthouse, financed through alternative revenue source bonds issued in 1999, 2000, and 2007, backed by a 1/4 cent public safety sales tax. An additional project to restore the historic courthouse clock and bell tower was financed through private donations. The construction and restoration has been completed and all bond money and donations have been spent. The residual balance remaining in the fund is unspent investment earnings and is assigned to be used on future courthouse equipment purchases and building repairs or improvements.

PROPRIETARY FUNDS

Enterprise Fund

Nursing Home Fund 081: Operating fund for the County Nursing Home. Funding comes mostly from user fees supplemented by a property tax approved by referendum in November 2002. The property tax rate limit is .03% [55 ILCS 5/5-21001].

Internal Service Funds

Employee Health Insurance Fund 620: Employee payroll deductions and billings to the various County funds provide a pool from which premiums are paid for health and life insurance benefits provided for employees.

Self-funded Insurance Fund 476: Accounts for risk financing activities (liability, auto, property and workers' compensation) funded through billings to the various County funds.

FIDUCIARY FUNDS

Custodial Funds

Circuit Clerk Fund: Court fees and fines which are collected by the Circuit Clerk and disbursed to the County Treasurer and other local governments.

County Clerk Fund: Tax redemptions collected and remitted to the persons who bought property at the tax sale, when the original owner later redeems his/her taxes. This fund also includes all fees collected by the County Clerk before they are deposited with the County Treasurer.

County Collector Fund: Collection and distribution of property taxes for local taxing districts.

Court Services Fund: Restitution for victims of crime plus public service worker activities administered by the Court Services Director.

Estate Fund 097: Unclaimed estates held by the County until disposition is determined by court order.

Garnishments Fund 699: Court-ordered wage garnishments withheld from County employees.

Property Condemnations Fund 667: Deposits held by the County Treasurer until the court determines just compensation for property condemned under the eminent domain statutes.

Sheriff Foreclosure Fund 687: Deposits held by the County Sheriff until the court determines disbursement of proceeds from property foreclosures sales.

**COUNTY OF CHAMPAIGN, ILLINOIS
DEPARTMENT DESCRIPTIONS
DECEMBER 31, 2020**

ADA Compliance - This budget, under the authority of the County Board, is not a county department, but is the budget for all remedial action required under the terms of the Settlement Agreement Between the United States of America and Champaign County, Illinois Under the Americans With Disabilities Act – DJ 204-24-116.

Administrative Services - Acts as the personnel office; handles job classification and salary administration. Processes bi-weekly payroll and Illinois Municipal Retirement for County employees. Administers insurance covering property, liability, workers' compensation, unemployment and employee health. Assists other County departments in securing bids or price quotes and issuing purchase orders. Prepares the annual budget for County Board approval.

Animal Control - Enforces Animal Control Act and county ordinances requiring rabies vaccination and dog and cat registration. Investigates animal bites and claims made for livestock killed by dogs. Operates an animal impound facility used by most local jurisdictions.

Auditor - Internal auditor and chief accountant for the County. Pays all County bills. Audits for compliance with County Board policy and state and federal law. Maintains centralized accounting system, generating weekly and monthly accounting reports for all County departments. Prepares the County's Comprehensive Annual Financial Report.

Board of Health - Eight-member board appointed by the County Board to provide community health services, such as immunizations and restaurant inspections. This board was created pursuant to a referendum passed by voters in November, 1996.

Board of Review - Three-person board appointed by the County Board to revise assessments of real property and assess all real property not assessed by a township assessor. Acts on written complaints of incorrectly assessed property and applications for property to be declared exempt from taxation. Signs certificates of error and distributes copies to County Clerk and County Collector. Delivers one set of completed assessment books to the County Clerk, who then certifies the abstract of assessments to the Illinois Department of Revenue.

Child Advocacy Center – Provides child abuse prevention education, compassionate support to abused children and coordination of the investigation and prosecution of abuse cases.

Circuit Clerk - Handles all court records of Champaign County. Produces all appeal records, issues passports and juror's vouchers. Is represented by a clerk at all jury trials. Accepts payment of and disburses court ordered fines and fees.

Circuit Clerk Support Enforcement - Contract with the State of Illinois Department of Healthcare and Family Services for federal and state reimbursement of expenditures in connection with ensuring that child support payments are made.

Circuit Court - The Circuit Court is the court of general jurisdiction in the State of Illinois. Champaign County is in the Sixth Judicial Circuit, along with five other neighboring counties. The Circuit Judges in Champaign County are elected by the voters in the Circuit. The Associate Judges are appointed by the Circuit Judges for four-year terms. All judges are paid by the state.

Cooperative Extension Service - Cooperative extension education property tax levied by the County and turned over to the University of Illinois Cooperative Extension Service. Cooperative Extension Service programs include 4-H, youth and adult education programs.

Coroner - Investigates all deaths where the decedent was not attended by a licensed physician. Responsible for determining the manner and cause of each death to decide if an inquest is necessary; prepares and conducts inquests.

**COUNTY OF CHAMPAIGN, ILLINOIS
DEPARTMENT DESCRIPTIONS
DECEMBER 31, 2020**

Correctional Center - This department accounts for most expenditures related to the operations of the County Jail and Satellite Jail. Utility costs are included under Public Properties. The Satellite Jail, completed in 1996, is the main intake/release facility for the county.

County Board - Coordinates and implements actions of the County Board and performs duties required by state statutes. Prepares weekly committee calendar and committee minutes.

County Clerk - Ex-Officio Clerk of the County Board; records County Board minutes; issues county licenses (marriage, liquor, motel); keeps records and issues certificates of vital statistics (birth, death, marriage); registers voters; conducts elections; files campaign disclosures and statements of economic interest; computes property tax extensions and mobile home privilege tax; keeps county maps on file.

Court Services/Probation - Juvenile Division makes recommendations to the Court on petitions concerning minors. Should the minor be placed on probation or under court supervision, the probation officer provides counseling, supervision and referral to appropriate community resources. Adult Division conducts pre-sentence investigations and prepares pre-sentence reports for the courts. If a defendant is sentenced to probation, the probation officer provides rehabilitative counseling and endeavors to see that the conditions of probation are carried out.

Debt Service – Department set up to accumulate resources restricted for the repayment of general obligation bonds, for which the County's general sales tax revenue has been pledged to repay.

Deputy Sheriff Merit Commission - Three member commission which certifies persons as eligible to serve as sworn deputies. Handles major disciplinary actions and discharge of sworn personnel. Members of commission are appointed by County Board upon recommendation of County Sheriff.

Developmental Disability Board - Three member board appointed by the County Board to administer services for persons with a developmental disability. This board was created pursuant to a referendum passed by voters in November, 2004.

Early Childhood Program - Early childhood education and development program, commonly known as Head Start, funded by federal grants from the Department of Health and Human Services and administered in Champaign County by the Regional Planning Commission.

Emergency Management Agency - Trains volunteers and acts to protect persons and property in the event of a disaster.

General County - This department accounts for General Corporate revenues and expenditures that are not allocated to specific General Corporate departments. Revenues include property, sales and income taxes. Expenditures include employee health insurance, independent audit, grants to local agencies and Regional Planning Commission membership dues.

Highway - Prepares plans, specifications and estimates for construction of County highways, bridges and culverts; supervises their construction and maintenance.

Information Technology – As a division of Administrative Services, provides computer support to County departments, covering hardware, purchased software, and customized in-house programming. Operates a secure computer network, email system and County website. Offers a helpdesk to assist County employees with both hardware and software issues.

Jury Commission - Three-person commission appointed by the Circuit Court Judges to compile a list of potential jurors based on registered voters and holders of Illinois driver's licenses or identification cards.

Juvenile Detention Center - Operates a secure, locked facility for minors apprehended by law enforcement agencies.

**COUNTY OF CHAMPAIGN, ILLINOIS
DEPARTMENT DESCRIPTIONS
DECEMBER 31, 2020**

Law Library - Provides law reference materials for the use of all members of the public, but used mainly by local attorneys and judges.

Mental Health Board - Nine-member board appointed by the County Board to provide funding to mental health agencies.

Nursing Home - The Nursing Home is licensed to provide skilled, intermediate and shelter care. Other care options include a special unit for Alzheimer's and Related Disorders, an Adult Day Care Program, and a Respite Care Program. A new Nursing Home facility was constructed in 2003-2006 and put into service in February 2007.

Physical Plant - Provides custodial and maintenance services for all County buildings and grounds. This department is under the direction of the County Administrator as a division of the Administrative Services Department.

Planning and Zoning - Reviews applications and issues zoning use permits. Inspects to ensure compliance with the zoning ordinance and investigates alleged violations. From June 1990 to December 2005, the County Board contracted with the Regional Planning Commission to provide these services. In 2006, the program returned to being run by employees in the General Corporate Fund. This department also pays the per diems of the Zoning Board of Appeals, which is a six-member board appointed by the County Board.

Public Defender - Court-appointed attorneys to represent indigent persons charged with crimes in Champaign County, involving every type of crime from murder to traffic offenses. Provides the same legal representation that defendants would receive from private counsel.

Recorder - Responsible for the recording of various instruments including deeds, mortgages, affidavits, plats, mechanics liens, corporation papers, surveys, and military discharges. These instruments are indexed and preserved through electronic imaging. Handles State of Illinois revenue stamps (transfer tax) for sales and transfers of property.

Regional Office of Education - Pays Champaign County's portion of certain administrative costs incurred by the Champaign/Ford Counties Regional Office of Education.

Regional Planning Commission - A nine-member advisory body created by the County Board to supply information and technical assistance to local government officials in the areas of planning, land use, housing, transportation engineering, public administration, community and economic development. Has expanded into the areas of police training and community service grants, including the Senior Services Program and Energy Assistance Programs. Administers the Early Childhood and Workforce Initiative Programs.

Sheriff - Patrols the rural areas and unincorporated towns and villages. Investigates crimes and serves civil papers (lawsuits, divorces, small claims, subpoenas, court orders and notices). Operates the two county jails and takes prisoners to court for arraignment and trial. Attends court and is responsible for court security. Transports prisoners to the state penitentiary. Handles mental cases and transports them as necessary.

Solid Waste Management - Maintains and updates the County' Solid Waste Management Plan, coordinates Residential Electronics Collection and Household Hazardous Waste collection events.

State's Attorney - Prosecutes all actions, civil and criminal, in the Circuit Court. Commences and prosecutes all actions and proceedings brought by any County Officer and defends actions and proceedings brought against the County or against County Officers. Gives opinions to any County officer upon questions of law relating to the County.

State's Attorney Support Enforcement - Contract with the State of Illinois Department of Healthcare and Family Services for federal and state reimbursement of expenditures in connection with enforcing court-ordered child support payments.

**COUNTY OF CHAMPAIGN, ILLINOIS
DEPARTMENT DESCRIPTIONS
DECEMBER 31, 2020**

Supervisor of Assessments - Maintains tax maps, property record cards and exemption certificates related to property tax assessments. Keeps current list of property owners. Publishes assessments in newspapers, sends notices of assessment changes to taxpayers and issues certificates of errors. Instructs, consults and assists township assessors and has the statutory power to make assessments.

Treasurer - Responsible for the receipt of County revenue and for the investment and disbursement of County funds. As County Collector, collects and distributes property and mobile home taxes for all taxing districts in the County. Bills and collects drainage assessment taxes. Supervises the sale of delinquent real estate taxes.

Veterans Assistance Commission - The Veterans Assistance Commission is an assistance program of the Veterans Assistance Commission (VAC) Executive Board, an entity composed of delegates from the major veterans' organizations in Champaign County. The program is created under the provisions of the Military Assistance Act 330 ILCS 545, and is funded by the Champaign County Board, for the benefit of veterans living in Champaign County. The program, opened December 1, 2012, is designed to assist an individual veteran, his/her spouse, or the veteran's minor children through some difficult financial hardships.